

# MRC cleanrooms

INNOVATE | IMPROVE | GROW





# ABOUT US

MRC Systems is a British company offering unique cleanroom products, services and turnkey solutions to clients around the globe.

MRC goes the extra distance to ensure you have the best controlled working environment from which to operate. From initial design discussions on your cleanroom requirements through to site surveys, manufacturing and site installation, you will find that MRC delivers every time.

MRC's modular cleanroom panels combine with state of the art innovations in cleanroom

equipment and technology to create the most advanced cleanroom solutions available on the global market today.

For 40 years MRC have helped leading companies, in the fields of Pharmaceuticals, Healthcare, Micro-electronics, Aerospace and more, to innovate, improve and grow.

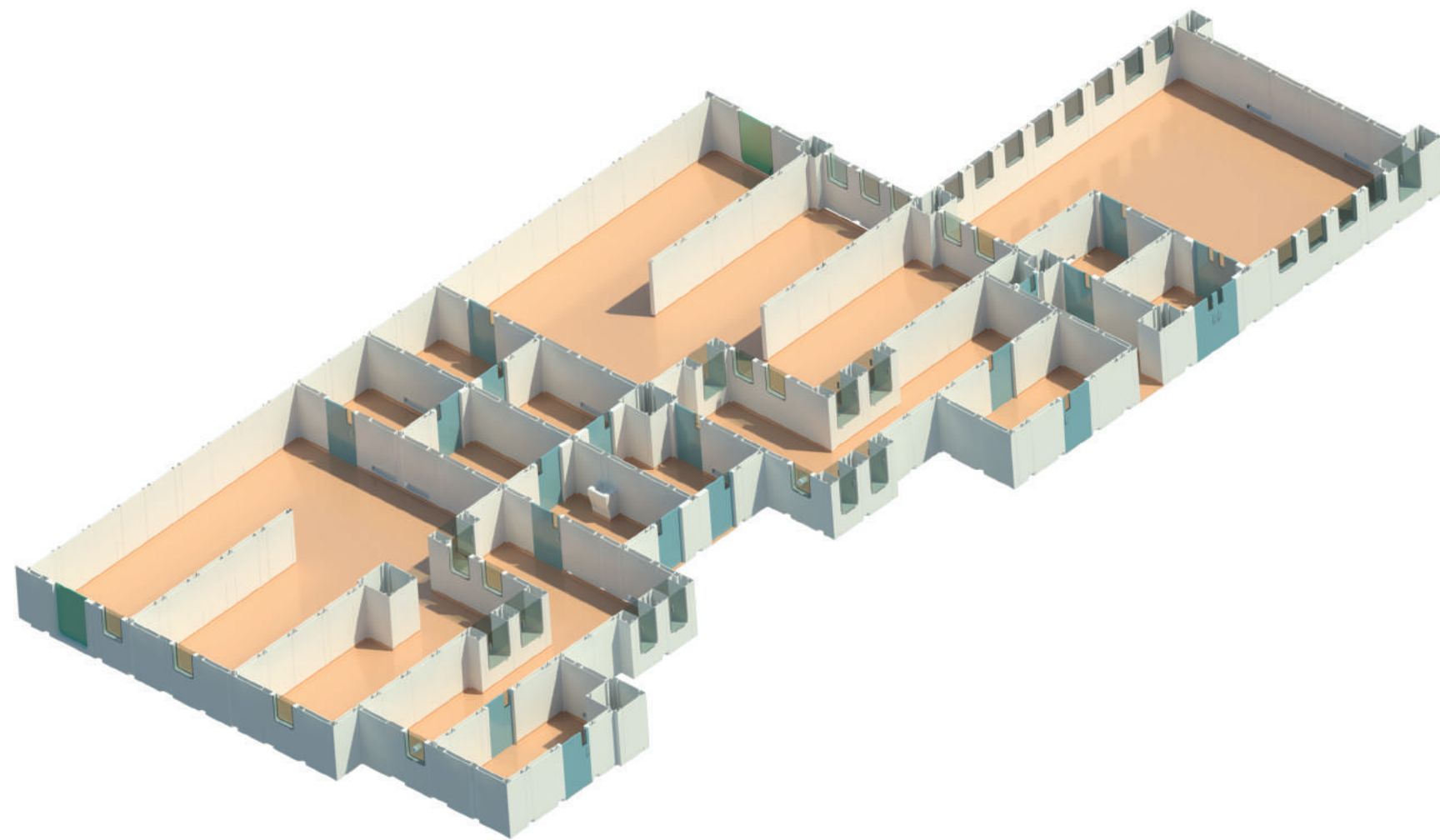
MRC undertake projects each year in over 20 countries and have offices and sales agents at different locations around the world.



## Table of Contents

About Us	2
Our Vision	4
GRP Panels	6
HPL Panels	8
Accessories	10
Doors	15
HVAC	17
Flooring	18
Turnkey	20
BOXlab	22
Contact	24





## OUR VISION

"MRC develops products that are a direct result of their vision; to help clients innovate, improve and grow in fields such as pharmaceuticals, aerospace, electronics, healthcare, renewable energy, maintenance and other high-end engineering fields. The MRC panelling systems were developed specifically to answer the questions and solve the issues that were raised by other panel systems on the market.

By challenging what was considered the "typical" solutions for cleanroom fabrication MRC were able to make something remarkable.

MRC boasts products and systems that have helped drive continuous innovation within industries that are truly changing the world that we live in.

MRC understands the requirements and regulations for manufacturing within these controlled industries, therefore are able to offer controlled environment solutions from design phase right through to fabrication, installation, validation services and commissioning."

Mr Samuel Hussain  
MRC Sales Manager





## GRP WALL & CEILING SYSTEM

## MRCGRP Panels

MRC designed the original GRP cleanroom paneling system. We focus on innovation means our **MRCGRP** System is widely considered the most technologically advanced cleanroom partition on the market. The panel manufacturing technique, coupled with the GRP formulation and specification provides an impervious smooth surface which is inherently strong, and resistant to damage and chemical attack. Unlike other construction materials the MRC GRP panel does not rely on a thin surface coating or finish to provide the required cleanroom surface. Also it is a moulded panel, allowing MRC to create many details in one single piece, avoiding joints and connections.

### DESCRIPTION

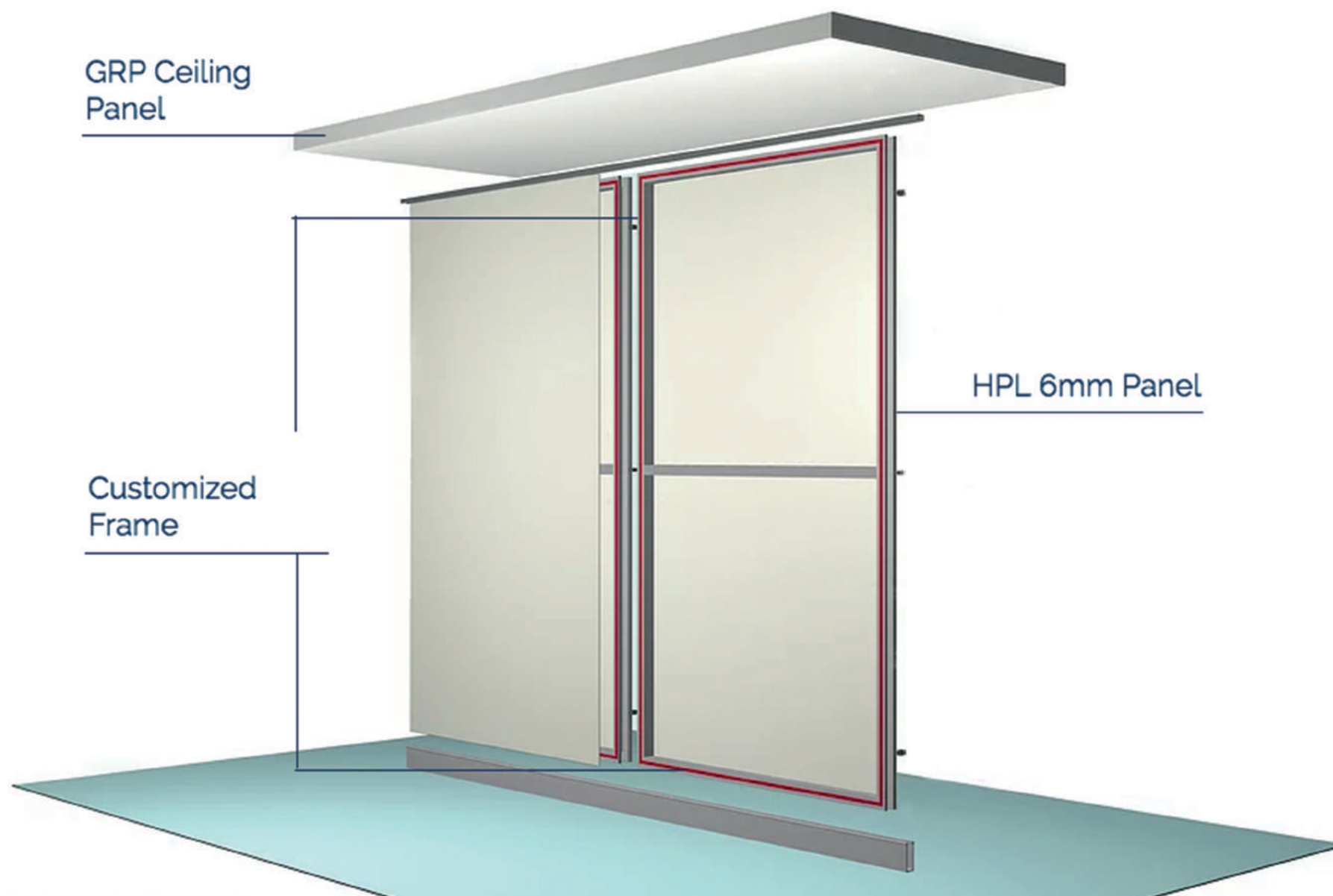
- Designed to FDA, GMP and ISO standards
- GRP (Glass Reinforced Polyester)
- Moulded construction (not flat sheet panels)
- Walkable ceiling system
- Integrated windows
- Integrated furniture
- Fire rated compartmental panels available
- Width customisable
- Height customisable
- Depth customisable

### FEATURES

- Approximately 70% less joints than traditional panel system
- Cannot rust or corrode
- No insulation material required. Access for services anywhere
- Superior chemical resistance
- 100% resistant to  $H_2O_2$
- Moulded integral coving
- Superior impact strength
- 100% repairable in position
- Cut outs managed on site
- Finish can be in any colour
- Life span of 40 years +







## HPL WALL SYSTEM

## MRCHPL Panels

The MRCHPL System is a double sided panel consisting of phenolic resin boards on both sides bonded to an integral aluminum subframe. The wall panel surface provides a very high standard matt finish and gives a hard, non-porous, smooth, ledge free surface, easy to maintain and inert to organic and inorganic chemicals. The strong aluminum integral sub-frame enables the panel to be quickly erected or dismantled to allow removal and replacement of individual wall panels or complete wall selections for flexibility.

### DESCRIPTION

- Designed to FDA, GMP and ISO standards
- HPL (High Pressure Laminate)
- Customised MRC frame system
- Integrated Windows - 6mm toughened glass
- Integrated GRP furniture available
- Spread of flame resistance
- Height customisable
- Depth customisable

### FEATURES

- Integrated service drop locations
- 4, 5 and 6mm HPL sheets
- High impact resistance.
- High chemical resistance
- No insulation required with 6mm sheet
- Integrations of GRP furniture to reduce joints
- Integration of GRP doors
- Small cut outs all managed at site
- Multiple colours available



# ACCESSORIES



## Transfer Hatch

- High quality, tough and durable pass boxes
- Manufactured from GRP
- Designed to integrate with any wall system
- Electromagnetic interlocking
- Toughened glass doors
- Stainless steel loading tray
- Hepa filtration can be incorporated
- Can be wall or floor mounted
- Various sizes are available



## Step-over-bench

- High quality, tough and durable step-overs
- Manufactured from GRP
- Resistant to cleaning agents
- Available with or without shoe storage
- Removable for equipment access
- Available in various lengths and configurations
- Integral rebate to accept any floor finish
- Can be incorporated into any cleanroom system or as part of our modular system
- Fixed or free standing



## Garments Cupboard

- Integrated within panel system
- 1 or 2 side access available
- Toughened glass doors
- Hepa filtration can be incorporated
- Extraction can be incorporated
- Electromagnetic interlocking available
- Customisable sizes and features
- Used within change rooms or for general storage



## Vanity Unit

- High quality, tough, durable sink units
- Manufactured from GRP
- Fitted with stainless steel bowl
- Available with a variety of mixer or auto taps
- Removable access panel for servicing
- Available in various sizes
- Integral rebate to accept any floor finish



## Air Shower

- High quality, tough and durable air shower
- Personnel or material air showers
- Designed to integrate with any wall system
- Wall and ceiling air supply
- Electromagnetic interlock system
- GRP or Glass doors
- Integral air return
- Re-circulating stand alone system or linked to existing supply and return air
- Sophisticated control system



## Dispensing / Weighing Booth

- Integrated Dispensing / Weighing Booth
- Laminar flow air supply
- Ceiling mounted fan filter units
- Designed to integrate with any wall system
- Integrated wall air returns with optional grill
- GRP bulk head and plenum
- FFU speed controllers
- Overhead lighting



## Filter Box

- High quality, tough and durable filter box
- Manufactured from GRP
- Completely sealed box
- With optional access panel for maintenance
- No need for welding and fixtures
- Can be integrated with any panelling system
- Available in various sizes
- A custom made GMP solution



## Emergency Exit

- High quality, tough and durable emergency exit
- Manufactured within the GRP wall
- High impact strength
- No frame work required
- Resistant to cleaning agents
- Easy to use pull gasket seal technology
- Available in various colours
- Flush signage available



## Garment Bin

- Integrated within panel system
- 1 or 2 side access available
- Entirely manufactured in GRP
- For use in exit change rooms for removal of garments from the controlled areas
- Integrated hinged lid on one side and push access flap on other
- Customisable sizes and features



## Extinguisher Housing

- High quality, tough and durable extinguisher housing
- Safe storage for fire extinguishers
- Simple and quick access
- GRP moulded construction
- Customisable sizes, colours and features
- Wall or floor mounted
- Can be fixed onto other panelling system



## Speech Unit

- For communication between controlled rooms
- Designed to integrate with any wall system or window
- Contains membrane allowing sound but not particles to pass through
- Avoids need for complicated or expensive intercoms
- Easy to disassemble and assemble for cleaning requirements





# DOORS

## DOOR TYPES

- GRP Swing Doors
- GRP Sliding Doors
- Glass Swing Doors
- Glass Sliding Doors
- Emergency Escape Doors
- Roller Shutter Doors

## ACCESSORIES

- Vision Panels
- Interlock system
- Door Seals
- Fire Rating
- Automatic controls
- Customisable furniture

## GRP DOORS

MRC GRP doors are constructed from GRP (Glass Reinforced Polyester). This material and an advanced manufacturing process means MRC offers the most versatile, value for money, and hygienic doors available on the market. Constructed within a single mould the MRC doors are one single piece of GRP; no joints, welding or connections which are difficult to clean, harbour dust and can contaminate hygienic areas. Self-closing hinges used.

## GLASS DOORS

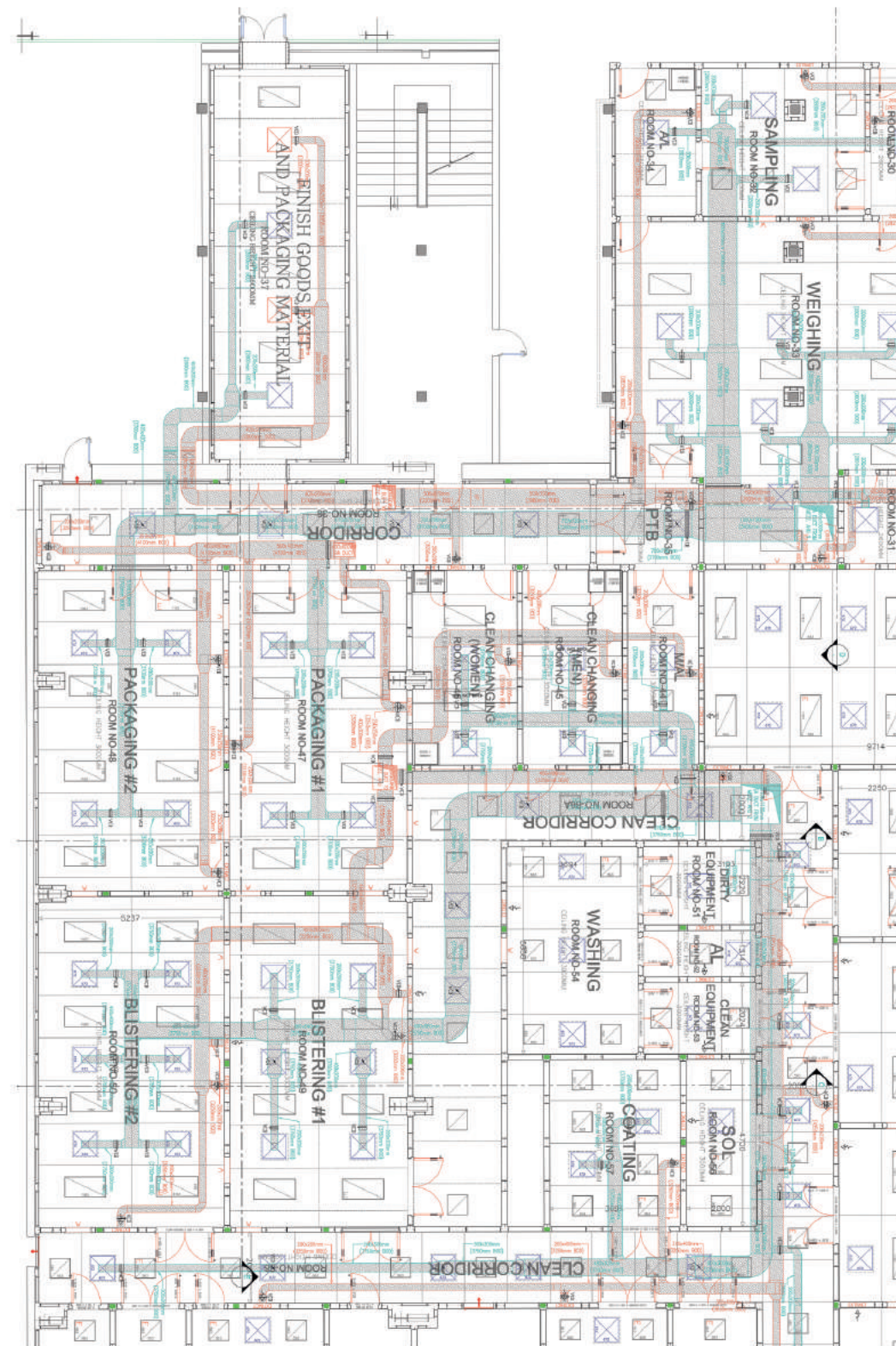
MRC's glass doors are constructed from 10mm toughened glass. These doors are perfect when maximum visibility is required. They have equally strong chemical resistance to GRP doors and offer an alternative look to your facility. Self-closing hinges used.

## QUALITY OF DESIGN

MRC's doors have been designed to meet ISO, USA FDA and European / international GMP standards and for conditions where qualities of a reinforced and chemically resistant structure are required.







# HVAC

MRC's team provide cleanroom HVAC solutions including:

- Conceptual and Detailed HVAC Design
- Equipment Selection
- Procurement
- Installation
- Commissioning and Balancing
- Maintenance Contracts

Through an in-house HVAC engineering team, and strategic partnership with high quality suppliers, MRC are your perfect HVAC partner. Drawing from 40 years of experience in the industry MRC can offer a wealth of knowledge and project management ability to ensure that the critical air system of your cleanroom is designed, installed and operating in line with the requirements of the work you are doing.

Whether it is pharmaceuticals, aerospace, micro-electronics or other, MRC have the ability to ensure compliance to the regulations and requirements of your industry.

## VALIDATION

MRC's in-house validation team offer cleanroom validation services from Operational Qualification through to the validation master plan of your facility. Utilising the most advanced validation equipment along with trained and experienced staff; MRC are your validation partner.







# FLOORING

## MRC Flooring

MRC supplies a range of flooring options to suit different user and industry requirements. The type of flooring and its application is often a critical parameter of a cleanroom environment. It must be hygienic, easy to clean and selected in-line with the processes of the rooms.

Available types of floor from MRC include, but not limited to:

- Vinyl Flooring
- Epoxy Flooring
- Raised Floor System
- Perforated Air Return Flooring
- Anti-Static Flooring
- Conductive Flooring







## TURNKEY PROJECT

MRC do not just provide an innovative cleanroom panelling system, over the past 40 years we have developed the capabilities to undertake cleanroom projects on a turnkey basis. Including:

### DESIGN AND ENGINEERING

- Conceptual Design Studies
- Detailed Design Studies

### SUPPLY AND INSTALLATION

- Cleanroom wall and ceiling panels doors and accessories
- HVAC System
- Electrical Services
- Equipment
- Furniture Fit Outs
- Validation and Commissioning

The above can be combined to offer a complete turnkey solution, or are available individually to fit into a tailored solution.

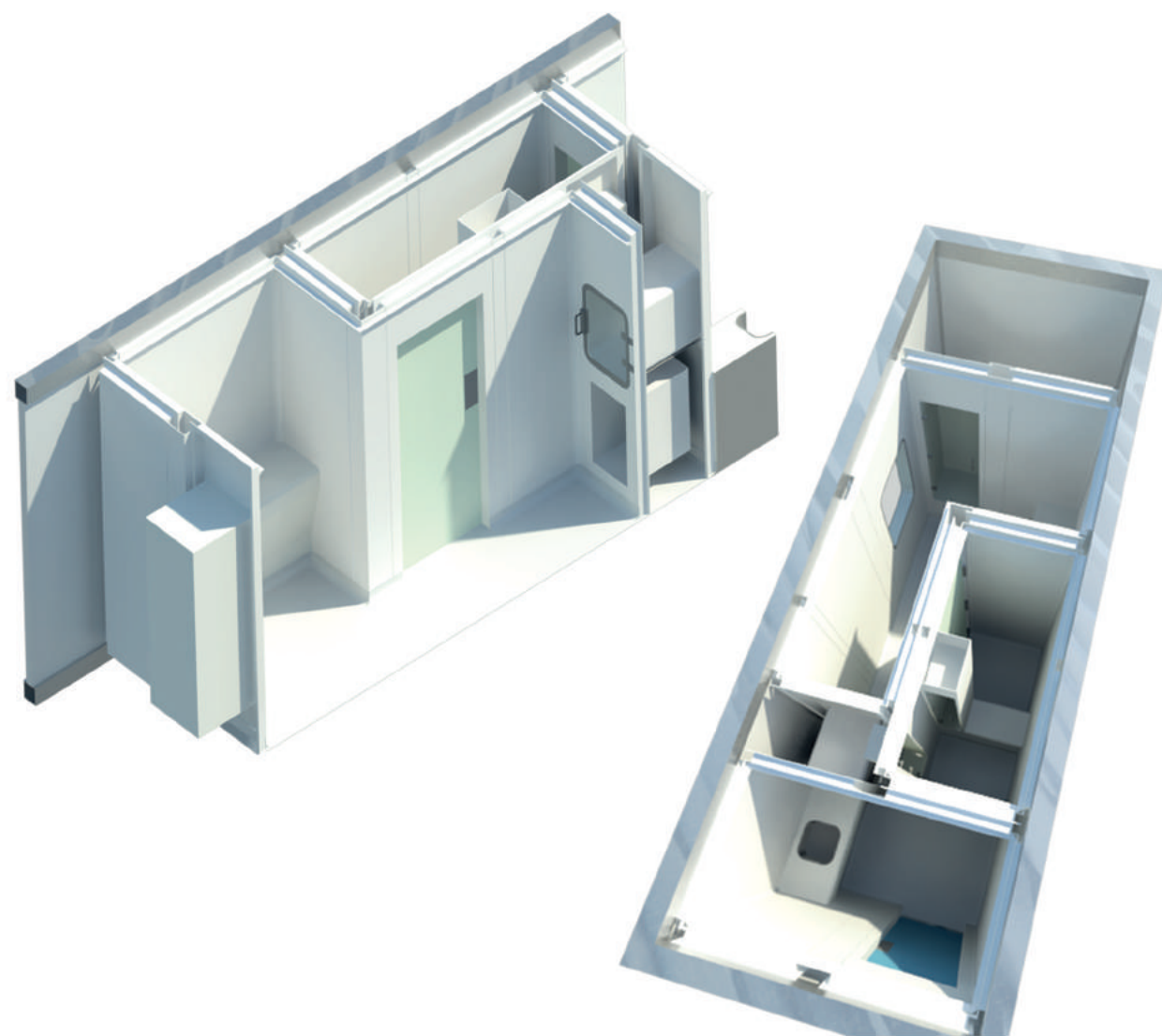
MRC employs a team of in-house HVAC, mechanical and electrical engineers to ensure that the integration of all services is efficient and professional.

MRC also employs in-house cleanroom and pharmaceutical consultants. This ensures that when implementing any project, regardless of the scope of work, we can fully understand the clients requirements and process.





# BOXlab SYSTEM



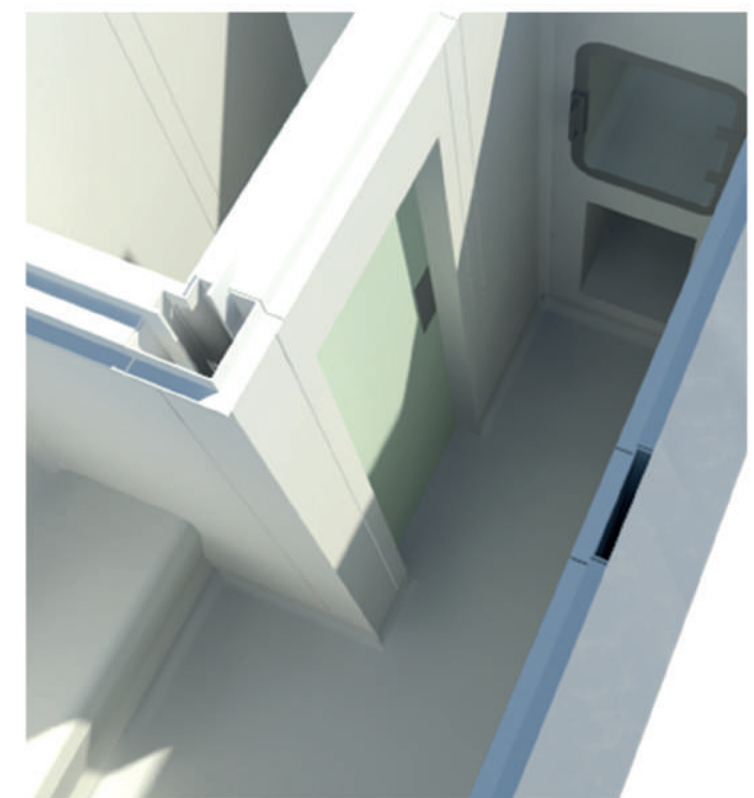
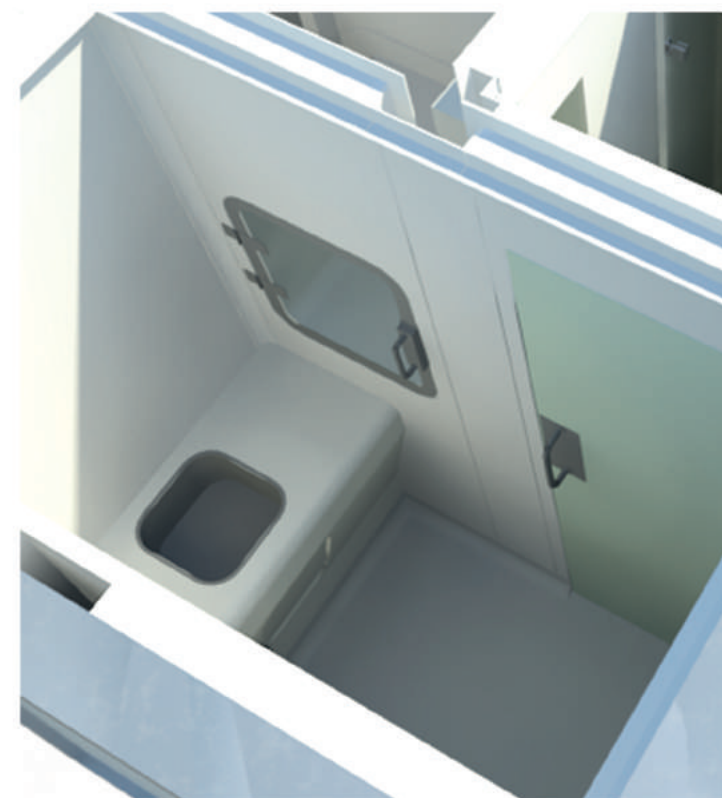
The MRC BOXlab system takes the quality of the MRC cleanroom system to anywhere in the world, at great value and convenience.

## FEATURES

- Contained within a shipping container structure for easy transportation
- Equipped with state of the art cleanroom fit-out materials and products
- Customizable layouts
- Meet cleanroom conditions from CNC to ISO5

## TYPICAL APPLICATIONS

- Used when space within an existing building is not available
- External IV compounding unit
- External negative pressure cytotoxic compounding unit
- Temporary controlled environment
- Quality control laboratory
- Micro-electronics laboratory
- Joined together to create larger manufacturing facilities and laboratories







## OUR CLIENTS

## CONTACT US



### MAIN OFFICES

DUBAI | UK | INDIA | SPAIN

✉ [sales@mrc-cleanrooms.com](mailto:sales@mrc-cleanrooms.com)

🌐 [www.mrc-cleanrooms.com](http://www.mrc-cleanrooms.com)

☎ +971 4883 5908



You will be directed to the local office or sales agent



Email

[sales@mrc-cleanrooms.com](mailto:sales@mrc-cleanrooms.com)

Website

[www.mrc-cleanrooms.com](http://www.mrc-cleanrooms.com)