

PREXIMA

TABLET PRESS MACHINES FOR PHARMACEUTICALS



PREXIMA SERIES



ALL OUR SKILLS. COMPRESSED.

Years of experience and expertise in the industry have been carefully channelled into PREXIMA, the series of tablet press machines.

Powered by IMA Active's knowledge of the sector, designed with unique Italian style, built to deliver top-level performance, PREXIMA will drive your productivity to a higher level of efficiency.



- ISOLATION OF THE PROCESSING AREA
- EXCELLENT ACCESSIBILITY
- QUICK TURRET REMOVAL
- ROBUST STRUCTURE
- OPTIMISED LUBRICATION
- LOW NOISE LEVEL
- MAX CORPORATE HMI FOR ENHANCED USABILITY

PREXIMA SERIES

ISOLATION OF THE PROCESSING AREA

PREXIMA ensures complete separation between processing and mechanical area thanks to the use of specially designed seals and protections. Bellows for enhanced isolation are available on request.

Limited surfaces in contact with the product reduce cleaning times and avoid cross contamination. Machine life cycle is longer and cams, tooling and compression rollers have an extended duration. A long-term investment.

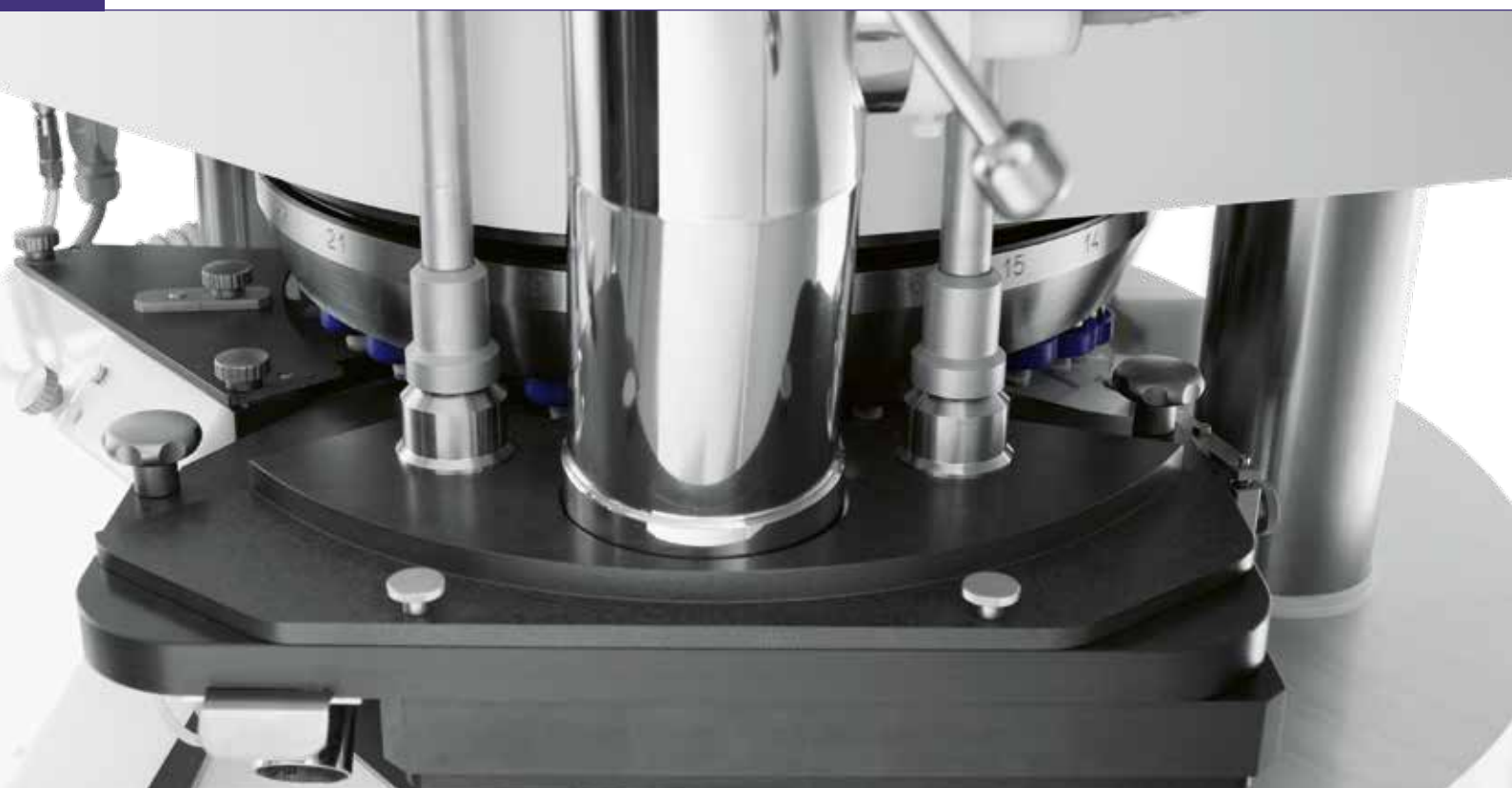
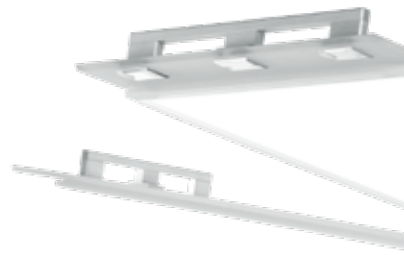
EXECUTION AVAILABLE UP TO OEB 4

EXCELLENT ACCESSIBILITY

Smart design leads on to great accessibility: straightforward operations, easy inspection and cleaning. Placed in a machine corner, the exit chute allows to open all the panels without disconnecting the auxiliaries.

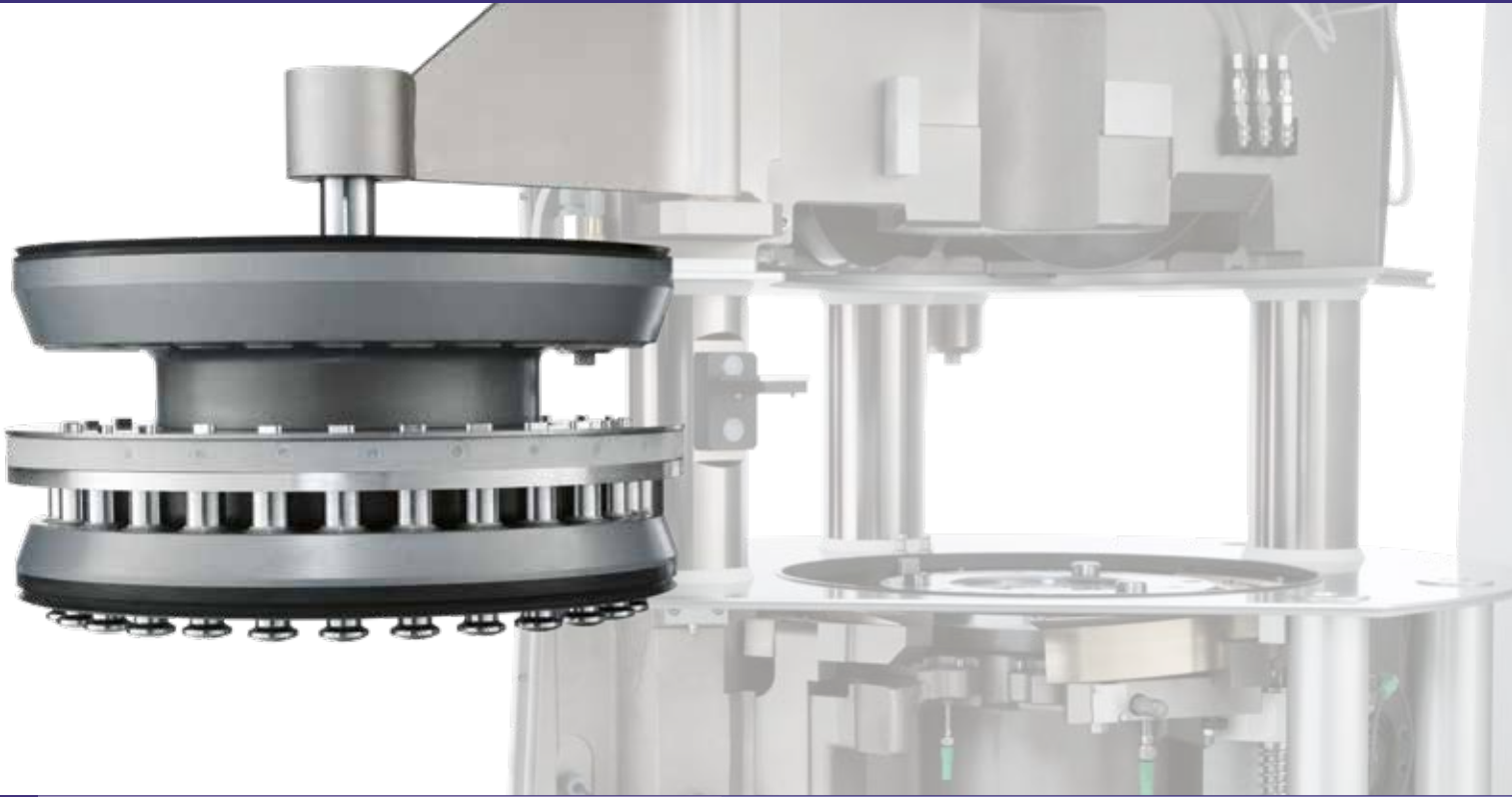
The processing area is fully accessible once the external doors are open while cams, rollers and all the other components of the mechanical area are immediately accessible having removed the side protections in the processing area.

Access to the machine basement is required only for maintenance and is not necessary for machine set-up, changeover and cleaning operations.





PREXIMA SERIES



ROBUST STRUCTURE

Upper and lower pre/main compression rollers are fixed on both sides and housed in a robust frame integrated in the machine structure.

Both rollers have the same diameter (250 mm), thus allowing:

- Flexible adjustment of pre-compression
- Optimal performance with a wide range of products

This exceptionally sturdy structure – an essential requisite for good tablet quality – guarantees both pre-compression and main compression forces up to 100 kN with maximum reliability.

QUICK TURRET REMOVAL

THE EXTRACTION OF THE TURRET IS QUICK AND EASY THANKS TO AN ARM COMPLETELY HOUSED IN THE MECHANICAL COMPARTMENT.

THE TURRET CAN BE REMOVED COMPLETE WITH DIES AND LOWER PUNCHES, THUS GUARANTEEING RAPID CHANGEOVER AND PREVENTING THE POWDER FROM FALLING INTO THE MECHANICAL AREA THROUGH THE LOWER PUNCH BORES.

THE HMI GUIDES THE OPERATOR STEP BY STEP DURING EACH PHASE OF TURRET REMOVAL.



LUBRICATION SYSTEM

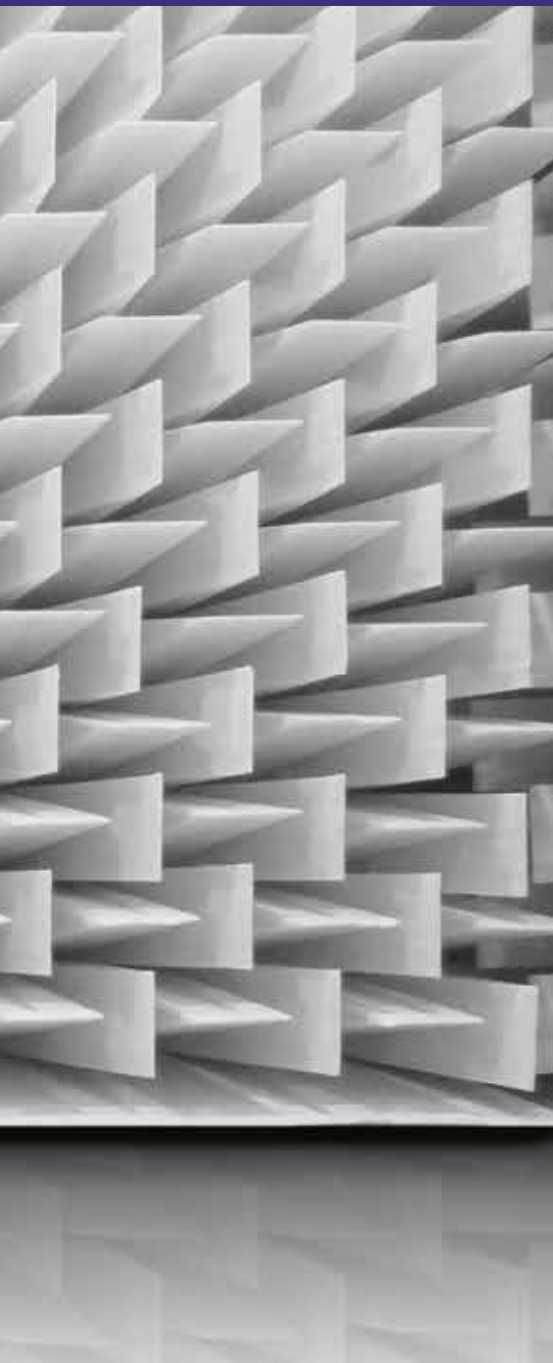
Positioned in the machine basement to lubricate upper and lower pre/main compression rollers, punches and cams, the lubrication system is automated. The oil does not penetrate the processing area and is recovered into the main oil tank, to be recirculated into the lubrication loop.

- OPTIMISED LUBRICANT CONSUMPTION
- CLEAN MACHINE: NO OIL DRIPPING FROM UPPER PUNCHES
- LESS MAINTENANCE



PREXIMA SERIES





LOW NOISE LEVEL

Tested at the anechoic chamber at the University of Ferrara (Italy) to select the best technical solution and sound-proof materials, PREXIMA is fitted with sealing on the machine doors, sound-proof panels in the basement and anti-vibration feet to keep the noise level below 80 dB.



CONTROL SYSTEM

PREXIMA is fitted with MAX, the new corporate HMI.

The underneath KORTX, an iFix-based SCADA, is designed to be IoT ready, for an easier and deeper connection with a superior layer, intra- or inter-plant.

The new user experience design plays a strategic role in improving operator efficiency:

- Prompt responsiveness
- Enhanced predictability
- Easy learning

The result is an HMI that truly meets the operators' needs.





THE BEST SOLUTION TO HANDLE ALL POWDERS

- SPECIFIC FEEDERS AND PADDLE GEOMETRIES
- EXTERNAL LUBRICATION SYSTEM FOR STICKY POWDERS
- LOW-MELTING POWDERS
- EFFERVESCENT TABLETS

PREXIMA 80



PREXIMA 80 IS DESIGNED FOR SMALL BATCH PRODUCTION AND R&D

- GREAT MACHINE CONFIGURATION FLEXIBILITY (TURRET 4+4)
- EQUIVALENT MACHINE MODEL AVAILABLE FOR HIGH CONTAINMENT (OEB5)
- GALENIC SOFTWARE AS AN OPTION



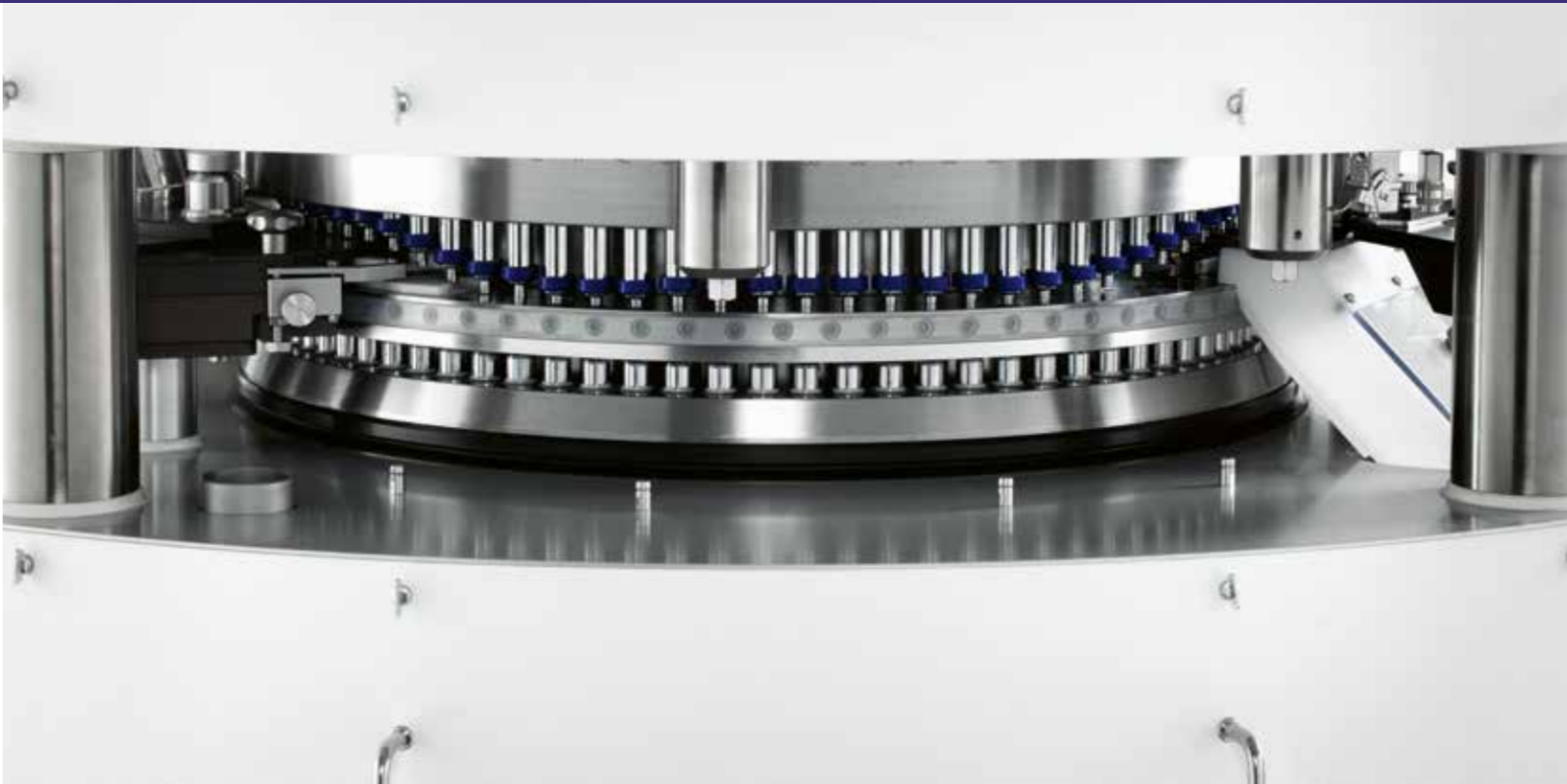
PREXIMA 300



PREXIMA 300 IS DESIGNED FOR MEDIUM PRODUCTION OUTPUT

- ROTATING ARM COMPLETELY HOUSED IN THE MECHANICAL COMPARTMENT
- AVAILABLE ALSO FOR BIG TABLETS UP TO 39 MM
- BUILT-IN ELECTRICAL CABINET FOR EASIER INSTALLATION

PREXIMA 800



PREXIMA 800 IS DESIGNED FOR HIGH PRODUCTION OUTPUT

- DOUBLE-SIDED TABLET PRESS FOR UP TO 1,044,000 TABLETS/HOUR
- 360° ACCESSIBILITY
- SUITABLE FOR BILAYER TABLETING PRODUCTION

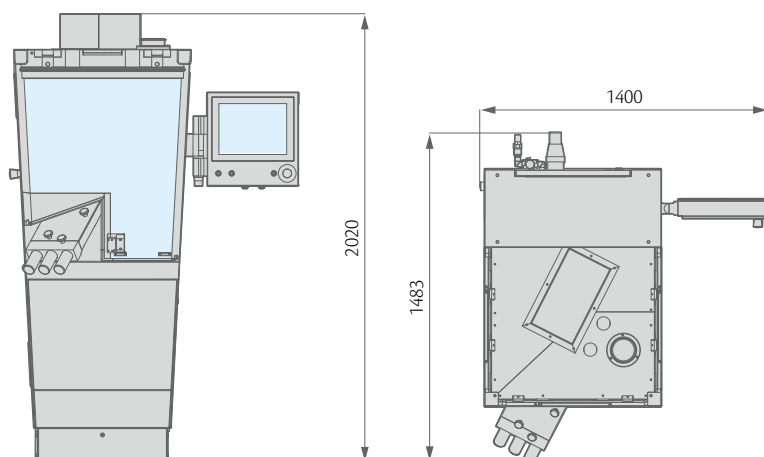
TECHNICAL DATA

	PREXIMA 80			
Die type	B+D	D	B	BB
Tool type (EU and TSM)	B+D	D	B	B
Number of press stations	4+4	13	16	19
Maximum tablet diameter (mm)	16+25	25	16	13
Maximum die filling (mm)	18			
Maximum output (tablets/hour)	20,400	66,300	81,600	96,900
Revolution per minute (-1)	85			
Maximum pre-compression force (kN)	10			
Maximum compaction force (kN)	60			
Electrical power requirement (kW)	7.5			
Standard voltage	400V (+/- 10%) 50-60 Hz			
Pitch circle diameter (mm)	180			

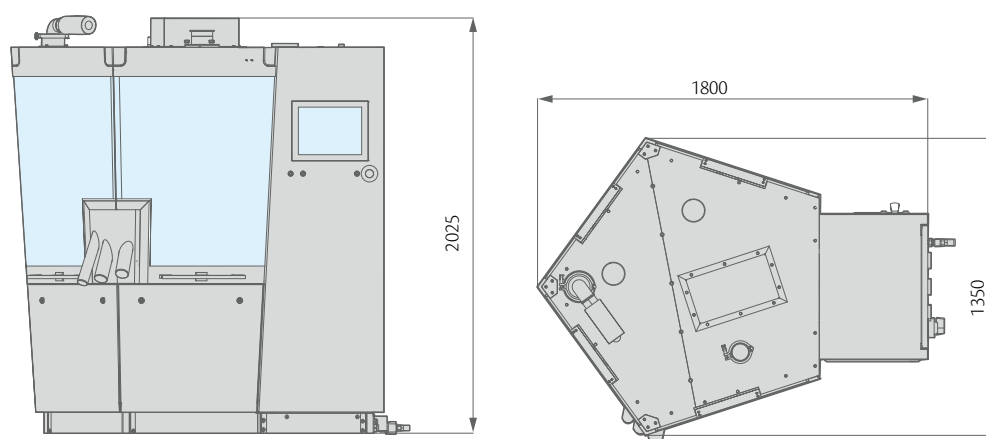
	PREXIMA 300				
Die type	IMA 32	D	B	BB	BBS
Tool type (EU and TSM)	IMA 32	D	B		
Number of press stations	18	27	33	41	44
Maximum tablet diameter (mm)	39	25	16	13	11
Maximum die filling (mm)	24	20	19		
Maximum output (tablets/hour)	97,200	194,400	237,600	295,200	316,800
Revolution per minute (-1)	120				
Maximum pre-compression force (kN)	100				
Maximum compaction force (kN)	100				
Electrical power requirement (kW)	14				
Standard voltage	400 V (+/- 10%) 50-60 Hz				
Pitch circle diameter (mm)	380				

	PREXIMA 800			
Die type	D	B	BB	BBS
Tool type (EU and TSM)	D	B		
Number of press stations	53	65	81	87
Maximum tablet diameter (mm)	25	16	13	11
Maximum die filling (mm)	20	19		
Maximum output (tablets/hour) monolayer	572,400	702,000	874,800	1,044,000
Maximum output (tablets/hour) bilayer	286,200	351,000	437,400	255,000
Revolution per minute (-1)	90			100
Maximum pre-compression force (kN)	100			
Maximum compaction force (kN)	100			
Electrical power requirement (kW)	27			
Standard voltage	400 V (+/- 10%) 50-60 Hz			
Pitch circle diameter (mm)	745			

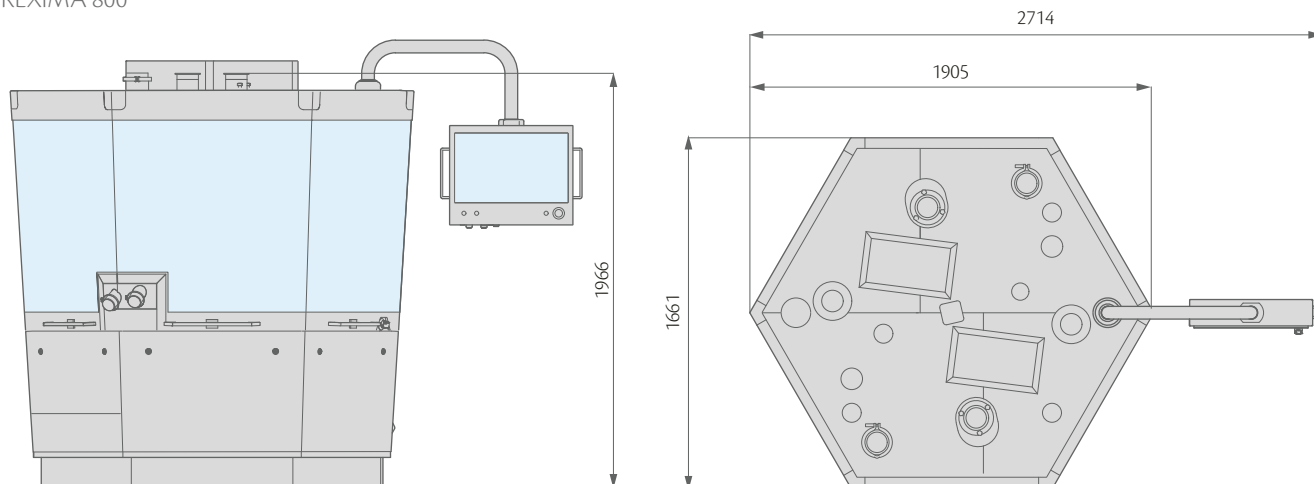
PREXIMA 80



PREXIMA 300



PREXIMA 800



ima.it



IMA S.p.A. Unipersonale

IMA ACTIVE division

Via I° Maggio 14 - 40064 Ozzano Emilia (Bologna) - Italy

Tel. +39 051 6514111 - Fax +39 051 6514287

marketing.active.it@ima.it

