



SINCE 1992

AIR SHOWERS

Page 01 - AIR SHOWER & AIR SHOWER TUNNELS

Page 02 - AIR SHOWER MODELS

Page 03 - AIR SHOWER SPECIFICATIONS

Page 04 - AIR SHOWER STANDARD MODELS - MILD STEEL

Page 05 - AIR SHOWER STANDARD MODELS - STAINLESS STEEL 202

Page 06 - AIR SHOWER STANDARD MODELS - STAINLESS STEEL 304

Page 07 - AIR SHOWER STANDARD MODELS - STAINLESS STEEL 316

Page 08 - AIR SHOWER STANDARD MODELS - MS + SS202

Page 09 - AIR SHOWER STANDARD MODELS - MS + SS304

Page 10 - AIR SHOWER SPECIFIC MODELS - STRAIGHT ENTRY RIGHT EXIT.

Page 11 - AIR SHOWER SPECIFIC MODELS - STRAIGHT ENTRY LEFT EXIT.

Page 12 - AIR SHOWER SPECIFIC MODELS - STRAIGHT ENTRY STRAIGHT RIGHT EXIT.

Page 13 - AIR SHOWER SPECIFIC MODELS - STRAIGHT ENTRY STRAIGHT LEFT EXIT.

Page 14 - AIR SHOWER SPECIFIC MODELS - STRAIGHT ENTRY RIGHT LEFT EXIT.

Page 15 - AIR SHOWER - WHY SAM

Page 16 - AIR SHOWER COMPONENTS

Page 17 - AIR SHOWER SELECTION

Page 18 - AIR SHOWER IMAGES

SAM PRODUCTS (P) Ltd

Greater Noida 201 310, U.P., INDIA

9810065139

samproducts1992@gmail.com

samproducts25@gmail.com

www.samproducts.net

09AAKCS6327D1Z8

U51101UP2007PTC055433

AIR SHOWER & AIR SHOWER TUNNELS

Air Showers are an effective way to reduce contaminants carried by individuals entering or leaving a controlled area. Air Showers can be the solutions to many decontamination problems.

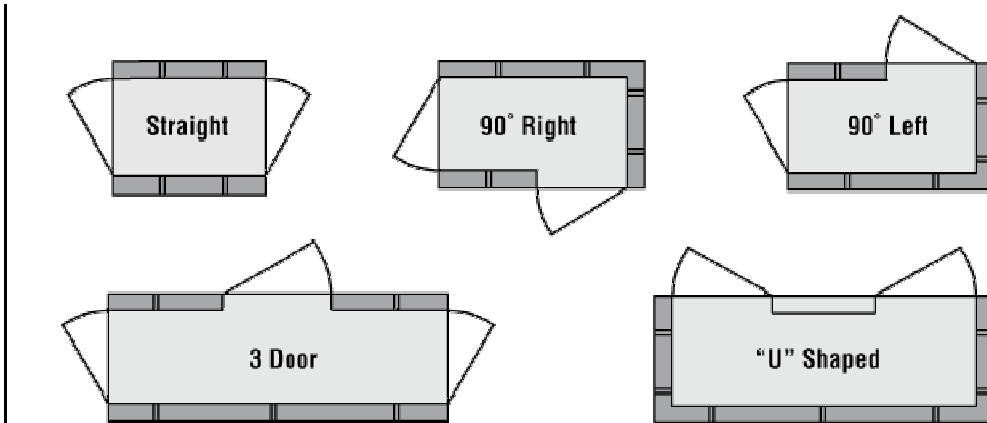
Air Showers and Air Shower Tunnels supply sterile air flow. The CLASS 100 air flow remove contamination while an individual stands in or walks through a specially constructed air chamber. Particles upto 0.3 microns are removed with 99.97% efficiency. Air streams are passed through Nozzles at high air velocity. This assists for efficient scrubbing action. The Air is directed for the removal of particulate matter from the walls & through the nozzles.



SAM Air Showers assist to remove the last traces of contamination from the persons entering Tunnels or using the Air Shower. The Air Shower are Installed just before Entry to the Classified Areas. The Air Shower have Basic Floor with Air from the Walls & Ceiling. Air Showers and Tunnels meet all Pharmaceutical, Industrial, Automobile, Bio Medical, Life Sciences, Micro Electric, etc. and other applications.

Air Showers and Air Shower Tunnels are economical to operate and require minimal maintenance.

AIR SHOWER MODELS



A. STRAIGHT ENTRY STRAIGHT EXIT TYPE.

B. STRAIGHT ENTRY RIGHT EXIT TYPE.

C. STRAIGHT ENTRY LEFT EXIT TYPE.

D. U TYPE AIR SHOWER.

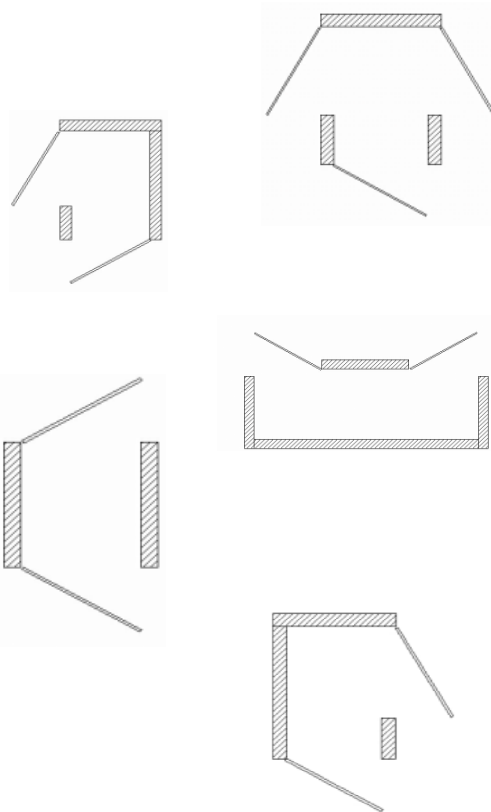
E. TOP LOADED AIR SHOWER.

F. TUNNEL TYPE AIR SHOWER.

G. EXPLOSION PROOF AIR SHOWER.

H. SINGLE DOOR LIFT AIR SHOWER.

I. MULTI DOOR AIR SHOWER.



AIR SHOWER SPECIFICATIONS

CONSTRUCTION : The Cabinet is Rigid & Robust. Sheets used are either Abrasion Resistant Oven Baked Powder Coated Finish or Factory Finish Hairline.

NOZZLES : Stainless Steel Adjustable Nozzle for Efficient Blow off Dust suitable for Wind Deflexion Degree of 45Degree..

ELECTRICAL MOTORS : Electrical Motors are High Efficiency IE 2 suitable for 50Hz considerably higher than EFF2 of CEMEP and identical to the U.S. EPAct for 60Hz.

FANS : Permanantly Lubricated Direct Drive Centrifugal Blowers for Efficient Cleaning Action.

AIR FLOW : Air Shower Designed to restrict Dust Collection from Lower Human Levels.

FILTERS : Contaminated Air is Filtered through Secondary Filters and HEPA Filters with 99.97% Efficiency for removal of Particles to 0.3 micron in size.

ELECTRICALS : Automatic Reset Circuit Breaker for Electronics Board. Indicator Lights are on Both Sides of Air Shower for "Wait" or "Go" Options.

LOGIC : Microprocessor Controlled Logic.

DOORS INTERLOCKING : Door Interlocking for both Doors.

EMERGENCY OFF : Emergency Switch Off in Walkway to Unlock Both Doors & Stop Air Flow.

TWO WAY OPERATION : Air Shower can be used for Entry & Exit also.

FACTORY TESTING : Factory Testing of Functions/ Visual Inspection/ Air Velocity Inspection.

PRE PURGE FACILITY : Please ask for Pre Purge Facility before raising Purchase requirement.

MANUAL/ WARRANTY/ TC/ PRECAUTIONS/ ELECTRICALS : Provided by Manufacturer.

AIR SHOWER STANDARD MODELS

Material of Construction (Cabinet) - Mild Steel.

MODEL	SIZE (ID)			SIZE (OD)		
	W	D	H	W	D	H
S68	800	680	1950	1475	800	2150
S103	800	1030	1950	1475	1150	2150
S138	800	1380	1950	1475	1500	2150
S173	800	1730	1950	1475	1850	2150
S208	800	2080	1950	1475	2200	2150
S243	800	2430	1950	1475	2550	2150
S278	800	2780	1950	1475	2900	2150
S313	800	3130	1950	1475	3250	2150
S348	800	3480	1950	1475	3600	2150
S383	800	3830	1950	1475	3950	2150
S418	800	4180	1950	1475	4300	2150
S453	800	4530	1950	1475	4650	2150
S488	800	4880	1950	1475	5000	2150
S523	800	5230	1950	1475	5350	2150
S558	800	5580	1950	1475	5700	2150
S593	800	5930	1950	1475	6050	2150
S628	800	6280	1950	1475	6400	2150
S663	800	6630	1950	1475	6750	2150
S698	800	6980	1950	1475	7100	2150
S733	800	7330	1950	1475	7450	2150
S768	800	7680	1950	1475	7800	2150
S803	800	8030	1950	1475	8150	2150
S838	800	8380	1950	1475	8500	2150
S873	800	8730	1950	1475	8850	2150
S908	800	9080	1950	1475	9200	2150
S943	800	9430	1950	1475	9550	2150

AIR SHOWER STANDARD MODELS

Material of Construction (Cabinet) - Stainless Steel 202 Grade.

MODEL	SIZE (ID)			SIZE (OD)		
	W	D	H	W	D	H
SS68	800	680	1950	1475	800	2150
SS103	800	1030	1950	1475	1150	2150
SS138	800	1380	1950	1475	1500	2150
SS173	800	1730	1950	1475	1850	2150
SS208	800	2080	1950	1475	2200	2150
SS243	800	2430	1950	1475	2550	2150
SS278	800	2780	1950	1475	2900	2150
SS313	800	3130	1950	1475	3250	2150
SS348	800	3480	1950	1475	3600	2150
SS383	800	3830	1950	1475	3950	2150
SS418	800	4180	1950	1475	4300	2150
SS453	800	4530	1950	1475	4650	2150
SS488	800	4880	1950	1475	5000	2150
SS523	800	5230	1950	1475	5350	2150
SS558	800	5580	1950	1475	5700	2150
SS593	800	5930	1950	1475	6050	2150
SS628	800	6280	1950	1475	6400	2150
SS663	800	6630	1950	1475	6750	2150
SS698	800	6980	1950	1475	7100	2150
SS733	800	7330	1950	1475	7450	2150
SS768	800	7680	1950	1475	7800	2150
SS803	800	8030	1950	1475	8150	2150
SS838	800	8380	1950	1475	8500	2150
SS873	800	8730	1950	1475	8850	2150
SS908	800	9080	1950	1475	9200	2150
SS943	800	9430	1950	1475	9550	2150

AIR SHOWER STANDARD MODELS

Material of Construction (Cabinet) - Stainless Steel 304 Grade.

MODEL	SIZE (ID)			SIZE (OD)		
	W	D	H	W	D	H
S368	800	680	1950	1475	800	2150
S3103	800	1030	1950	1475	1150	2150
S3138	800	1380	1950	1475	1500	2150
S3173	800	1730	1950	1475	1850	2150
S3208	800	2080	1950	1475	2200	2150
S3243	800	2430	1950	1475	2550	2150
S3278	800	2780	1950	1475	2900	2150
S3313	800	3130	1950	1475	3250	2150
S3348	800	3480	1950	1475	3600	2150
S3383	800	3830	1950	1475	3950	2150
S3418	800	4180	1950	1475	4300	2150
S3453	800	4530	1950	1475	4650	2150
S3488	800	4880	1950	1475	5000	2150
S3523	800	5230	1950	1475	5350	2150
S3558	800	5580	1950	1475	5700	2150
S3593	800	5930	1950	1475	6050	2150
S3628	800	6280	1950	1475	6400	2150
S3663	800	6630	1950	1475	6750	2150
S3698	800	6980	1950	1475	7100	2150
S3733	800	7330	1950	1475	7450	2150
S3768	800	7680	1950	1475	7800	2150
S3803	800	8030	1950	1475	8150	2150
S3838	800	8380	1950	1475	8500	2150
S3873	800	8730	1950	1475	8850	2150
S3908	800	9080	1950	1475	9200	2150
S3943	800	9430	1950	1475	9550	2150

AIR SHOWER STANDARD MODELS

Material of Construction (Cabinet) - Stainless Steel 316 Grade.

MODEL	SIZE (ID)			SIZE (OD)		
	W	D	H	W	D	H
S668	800	680	1950	1475	800	2150
S6103	800	1030	1950	1475	1150	2150
S6138	800	1380	1950	1475	1500	2150
S6173	800	1730	1950	1475	1850	2150
S6208	800	2080	1950	1475	2200	2150
S6243	800	2430	1950	1475	2550	2150
S6278	800	2780	1950	1475	2900	2150
S6313	800	3130	1950	1475	3250	2150
S6348	800	3480	1950	1475	3600	2150
S6383	800	3830	1950	1475	3950	2150
S6418	800	4180	1950	1475	4300	2150
S6453	800	4530	1950	1475	4650	2150
S6488	800	4880	1950	1475	5000	2150
S6523	800	5230	1950	1475	5350	2150
S6558	800	5580	1950	1475	5700	2150
S6593	800	5930	1950	1475	6050	2150
S6628	800	6280	1950	1475	6400	2150
S6663	800	6630	1950	1475	6750	2150
S6698	800	6980	1950	1475	7100	2150
S6733	800	7330	1950	1475	7450	2150
S6768	800	7680	1950	1475	7800	2150
S6803	800	8030	1950	1475	8150	2150
S6838	800	8380	1950	1475	8500	2150
S6873	800	8730	1950	1475	8850	2150
S6908	800	9080	1950	1475	9200	2150
S6943	800	9430	1950	1475	9550	2150

AIR SHOWER STANDARD MODELS

Material of Construction (Cabinet) - Mild Steel Powder Coated (Outside Skin) & Stainless Steel 202 Grade (Inside Skin).

MODEL	SIZE (ID)			SIZE (OD)		
	W	D	H	W	D	H
SM68	800	680	1950	1475	800	2150
SM103	800	1030	1950	1475	1150	2150
SM138	800	1380	1950	1475	1500	2150
SM173	800	1730	1950	1475	1850	2150
SM208	800	2080	1950	1475	2200	2150
SM243	800	2430	1950	1475	2550	2150
SM278	800	2780	1950	1475	2900	2150
SM313	800	3130	1950	1475	3250	2150
SM348	800	3480	1950	1475	3600	2150
SM383	800	3830	1950	1475	3950	2150
SM418	800	4180	1950	1475	4300	2150
SM453	800	4530	1950	1475	4650	2150
SM488	800	4880	1950	1475	5000	2150
SM523	800	5230	1950	1475	5350	2150
SM558	800	5580	1950	1475	5700	2150
SM593	800	5930	1950	1475	6050	2150
SM628	800	6280	1950	1475	6400	2150
SM663	800	6630	1950	1475	6750	2150
SM698	800	6980	1950	1475	7100	2150
SM733	800	7330	1950	1475	7450	2150
SM768	800	7680	1950	1475	7800	2150
SM803	800	8030	1950	1475	8150	2150
SM838	800	8380	1950	1475	8500	2150
SM873	800	8730	1950	1475	8850	2150
SM908	800	9080	1950	1475	9200	2150
SM943	800	9430	1950	1475	9550	2150

S = SAM; M = STAINLESS STEEL 202 + MILD STEEL.

AIR SHOWER STANDARD MODELS

Material of Construction (Cabinet) - Mild Steel Powder Coated (Outside Skin) & Stainless Steel 304 Grade (Inside Skin).

MODEL	SIZE (ID)			SIZE (OD)		
	W	D	H	W	D	H
S3M68	800	680	1950	1475	800	2150
S3M103	800	1030	1950	1475	1150	2150
S3M138	800	1380	1950	1475	1500	2150
S3M173	800	1730	1950	1475	1850	2150
S3M208	800	2080	1950	1475	2200	2150
S3M243	800	2430	1950	1475	2550	2150
S3M278	800	2780	1950	1475	2900	2150
S3M313	800	3130	1950	1475	3250	2150
S3M348	800	3480	1950	1475	3600	2150
S3M383	800	3830	1950	1475	3950	2150
S3M418	800	4180	1950	1475	4300	2150
S3M453	800	4530	1950	1475	4650	2150
S3M488	800	4880	1950	1475	5000	2150
S3M523	800	5230	1950	1475	5350	2150
S3M558	800	5580	1950	1475	5700	2150
S3M593	800	5930	1950	1475	6050	2150
S3M628	800	6280	1950	1475	6400	2150
S3M663	800	6630	1950	1475	6750	2150
S3M698	800	6980	1950	1475	7100	2150
S3M733	800	7330	1950	1475	7450	2150
S3M768	800	7680	1950	1475	7800	2150
S3M803	800	8030	1950	1475	8150	2150
S3M838	800	8380	1950	1475	8500	2150
S3M873	800	8730	1950	1475	8850	2150
S3M908	800	9080	1950	1475	9200	2150
S3M943	800	9430	1950	1475	9550	2150

S = SAM; 3 = SS304; M = MILD STEEL.

AIR SHOWER SPECIFIC MODELS

STRAIGHT ENTRY RIGHT EXIT.

MODEL	SIZE (ID)			SIZE (OD)		
	W	D	H	W	D	H
Material of Construction - Mild Steel Sheet.						
S110RE	950	950	1950	1475	1100	2150
S190RE	1750	950	1950	1900	1475	2150
S270RE	2550	950	1950	2700	1475	2150
S300RE	2785	950	1950	3000	1475	2150
Material of Construction - Stainless Steel Sheet (202 Grade).						
SS110RE	950	950	1950	1475	1100	2150
SS190RE	1750	950	1950	1900	1475	2150
SS270RE	2550	950	1950	2700	1475	2150
SS300RE	2785	950	1950	3000	1475	2150
Material of Construction - Stainless Steel Sheet (304 Grade).						
S3110RE	950	950	1950	1475	1100	2150
S3190RE	1750	950	1950	1900	1475	2150
S3270RE	2550	950	1950	2700	1475	2150
S3300RE	2785	950	1950	3000	1475	2150

Material of Construction (Cabinet) - Mild Steel Powder Coated (Outside Skin) & Stainless Steel 202 Grade (Inside Skin).

SS110REM	950	950	1950	1475	1100	2150
SS190REM	1750	950	1950	1900	1475	2150
SS270REM	2550	950	1950	2700	1475	2150
SS2300RM	2785	950	1950	3000	1475	2150

Material of Construction (Cabinet) - Mild Steel Powder Coated (Outside Skin) & Stainless Steel 304 Grade (Inside Skin).

S3110REM	950	950	1950	1475	1100	2150
S3190REM	1750	950	1950	1900	1475	2150
S3270REM	2550	950	1950	2700	1475	2150
S3300REM	2785	950	1950	3000	1475	2150

S = SAM; S = SS 202; 3 = SS304; M = MILD STEEL.

AIR SHOWER SPECIFIC MODELS

STRAIGHT ENTRY LEFT EXIT.

MODEL	SIZE (ID)			SIZE (OD)		
	W	D	H	W	D	H
Material of Construction - Mild Steel Sheet.						
S110LE	950	950	1950	1475	1100	2150
S190LE	1750	950	1950	1900	1475	2150
S270LE	2550	950	1950	2700	1475	2150
S300LE	2785	950	1950	3000	1475	2150
Material of Construction - Stainless Steel Sheet (202 Grade).						
SS110LE	950	950	1950	1475	1100	2150
SS190LE	1750	950	1950	1900	1475	2150
SS270LE	2550	950	1950	2700	1475	2150
SS300LE	2785	950	1950	3000	1475	2150
Material of Construction - Stainless Steel Sheet (304 Grade).						
S3110LE	950	950	1950	1475	1100	2150
S3190LE	1750	950	1950	1900	1475	2150
S3270LE	2550	950	1950	2700	1475	2150
S3300LE	2785	950	1950	3000	1475	2150

Material of Construction (Cabinet) - Mild Steel Powder Coated (Outside Skin) & Stainless Steel 202 Grade (Inside Skin).

SS110LEM	950	950	1950	1475	1100	2150
SS190LEM	1750	950	1950	1900	1475	2150
SS270LEM	2550	950	1950	2700	1475	2150
SS300LEM	2785	950	1950	3000	1475	2150

Material of Construction (Cabinet) - Mild Steel Powder Coated (Outside Skin) & Stainless Steel 304 Grade (Inside Skin).

S3110LEM	950	950	1950	1475	1100	2150
S3190LEM	1750	950	1950	1900	1475	2150
S3270LEM	2550	950	1950	2700	1475	2150
S3300LEM	2785	950	1950	3000	1475	2150

S = SAM; S = SS 202; 3 = SS304; M = MILD STEEL.

AIR SHOWER SPECIFIC MODELS

STRAIGHT ENTRY STRAIGHT & RIGHT EXIT.

MODEL	SIZE (ID)			SIZE (OD)		
	W	D	H	W	D	H
Material of Construction - Mild Steel Sheet.						
S103SR	800	1030	1950	1475	1150	2150
S138SR	800	1380	1950	1475	1500	2150
S170SR	800	1730	1950	1475	1850	2150
Material of Construction - Stainless Steel Sheet (202 Grade).						
SS103SR	800	1030	1950	1475	1150	2150
SS138SR	800	1380	1950	1475	1500	2150
SS170SR	800	1730	1950	1475	1850	2150
Material of Construction - Stainless Steel Sheet (304 Grade).						
S3103SR	800	1030	1950	1475	1150	2150
S3138SR	800	1380	1950	1475	1500	2150
S3170SR	800	1730	1950	1475	1850	2150

Material of Construction (Cabinet) - Mild Steel Powder Coated (Outside Skin) & Stainless Steel 202 Grade (Inside Skin).

SS103SRM	800	1030	1950	1475	1150	2150
SS138SRM	800	1380	1950	1475	1500	2150
SS170SRM	800	1730	1950	1475	1850	2150

Material of Construction (Cabinet) - Mild Steel Powder Coated (Outside Skin) & Stainless Steel 304 Grade (Inside Skin).

S3103SRM	800	1030	1950	1475	1150	2150
S3138SRM	800	1380	1950	1475	1500	2150
S3170SRM	800	1730	1950	1475	1850	2150

S = SAM; S = SS 202; 3 = SS304; M = MILD STEEL; SR = STRAIGHT & RIGHT EXIT.

AIR SHOWER SPECIFIC MODELS

STRAIGHT ENTRY STRAIGHT & LEFT EXIT.

MODEL	SIZE (ID)			SIZE (OD)		
	W	D	H	W	D	H
Material of Construction - Mild Steel Sheet.						
S103SL	800	1030	1950	1475	1150	2150
S138SL	800	1380	1950	1475	1500	2150
S170SL	800	1730	1950	1475	1850	2150
Material of Construction - Stainless Steel Sheet (202 Grade).						
SS103SL	800	1030	1950	1475	1150	2150
SS138SL	800	1380	1950	1475	1500	2150
SS170SL	800	1730	1950	1475	1850	2150
Material of Construction - Stainless Steel Sheet (304 Grade).						
S3103SL	800	1030	1950	1475	1150	2150
S3138SL	800	1380	1950	1475	1500	2150
S3170SL	800	1730	1950	1475	1850	2150

Material of Construction (Cabinet) - Mild Steel Powder Coated (Outside Skin) & Stainless Steel 202 Grade (Inside Skin).

SS103SLM	800	1030	1950	1475	1150	2150
SS138SLM	800	1380	1950	1475	1500	2150
SS170SLM	800	1730	1950	1475	1850	2150

Material of Construction (Cabinet) - Mild Steel Powder Coated (Outside Skin) & Stainless Steel 304 Grade (Inside Skin).

S3103SLM	800	1030	1950	1475	1150	2150
S3138SLM	800	1380	1950	1475	1500	2150
S3170SLM	800	1730	1950	1475	1850	2150

S = SAM; S = SS 202; 3 = SS304; M = MILD STEEL; SL = STRAIGHT & LEFT EXIT.

AIR SHOWER SPECIFIC MODELS

STRAIGHT ENTRY RIGHT LEFT EXIT.

MODEL	SIZE (ID)			SIZE (OD)		
	W	D	H	W	D	H
Material of Construction - Mild Steel Sheet.						
S360RL	3600	800	1950	3900	1525	2150
S460RL	4600	800	1950	4900	1525	2150
S517RL	5175	950	1950	5900	1675	2150
Material of Construction - Stainless Steel Sheet (202 Grade).						
SS360RL	3600	800	1950	3900	1525	2150
SS460RL	4600	800	1950	4900	1525	2150
SS517RL	5175	950	1950	5900	1675	2150
Material of Construction - Stainless Steel Sheet (304 Grade).						
S3360RL	3600	800	1950	3900	1525	2150
S3460RL	4600	800	1950	4900	1525	2150
S3517RL	5175	950	1950	5900	1675	2150

Material of Construction (Cabinet) - Mild Steel Powder Coated (Outside Skin) & Stainless Steel 202 Grade (Inside Skin).

SS360RLM	3600	800	1950	3900	1525	2150
SS460RLM	4600	800	1950	4900	1525	2150
SS517RLM	5175	950	1950	5900	1675	2150

Material of Construction (Cabinet) - Mild Steel Powder Coated (Outside Skin) & Stainless Steel 304 Grade (Inside Skin).

S3360RLM	3600	800	1950	3900	1525	2150
S3460RLM	4600	800	1950	4900	1525	2150
S3517RLM	5175	950	1950	5900	1675	2150

S = SAM; S = SS 202; 3 = SS304; M = MILD STEEL; S = STRAIGHT; L = LEFT; R = RIGHT.

AIR SHOWER - WHY SAM

SAM AIR SHOWER ADVANTAGE

- * EASY TO USE & EASY TO MAINTAIN.
- * ASSISTS TO AVOID CROSS CONTAMINATION.
- * HIGH AIR FLOW & AIR QUANTITY.
- * AVAILABLE WITH DOOR INTERLOCK/ UNLOCKED DOORS/ TIME SETTINGS.
- * RECIRCULATED AIR FOR LONGER FILTER LIFE & REDUCED MAINTENANCE COST.
- * AVAILABLE IN "PLUG & USE". ALTERNATIVELY EASY TO INSTALL.
- * MORE THAN TEN MILLION USERS PAN INDIA.
- * TAILOR MADE AIR SHOWER TO SUIT SPECIFIC REQUIREMENTS.
- * NO DUST COLLECTIONS POINTS, SUITABLE FOR CLEAN ROOMS.
- * ROUND THE CLOCK SERVICE AFTER SALES.
- * NO METAL TO METAL NOISE.
- * VIBRATION LESS.
- * APPRECIATE THIRD PARTY VALIDATIONS.
- * SUPER HIGH AIR FLOW OF 39m/s AIR SHOWER ALSO AVAILABLE.

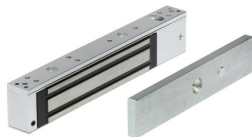


AIR SHOWER COMPONENTS

STANDARD COMPONENTS - AIR SHOWER

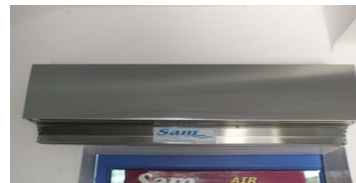


1. Motor /Blower Assembly.
2. Electrical Power Box.
3. Emergency Release Button.
4. HEPA Filter 99.97% effective on 0.3 Micron Particles.
5. Adjustable Nozzles.
6. Fluorescent LED Fixtures.
7. Strong Hinged/ Sliding Doors with View Glass.
8. Micro Processor Panel.
9. Access Panel for Easy Maintenance.
10. Electric Interlocking for Doors.



OPTIONAL COMPONENTS - AIR SHOWER

1. Epoxy Painted Cold Rolled Steel and Stainless Steel.
2. Safety Plate Glass Doors.
3. Maghnelic Gauge HEPA Filters.
4. Standby Air Flow.
5. Ceiling Mounted HEPA filter for constant Laminar Flow.
6. Raised Floor Grated Return.
7. Toughened Glass.
8. Flame Proof Construction/ Motor.
9. CCTV Provision.
10. Air Curtain/ PVC Strip Curtain at Entrance.



In line with our policy of Continual Product Improvement, we at SAM PRODUCTS Pvt Ltd reserve the right to incorporate and use equipment and material to conform to the latest Design of our Products while maintaining the specifications of the Equipment.

Dimensions are for Information Only. For exact Dimension, please write to us at samproducts1992@gmail.com.

AIR SHOWER SELECTION

FOLLOWING INPUT INFORMATION FROM USER ASSISTS TO SELECT SUITABLE MODEL.

Sr No	BASIC INFORMATION	OPTIONS	REMARKS
1	Material Of Construction.	Mild Steel Sheet	
		Stainless Steel Sheet 202 Grade	
		Stainless Steel Sheet 304 Grade	
2	Entry	Human Only/ Human & Trolley Movement/ Material Movement	
3	Number of Users/ Cycle	01/02/03/04/05/06/07/08/.....50/.....100	
4	Flooring	Required/ Not Required.	
5	Application	Pharma/ Auto/ Electronics/ Others (Specify)	
6	Input Power Available	440v/ 50Hz.	
7	Space Available for Install(w)(d)(h)mm.	
8	Door	Hinged/ Sliding/ Rollup/ Shutter/ PVC/ Air Curtain/ Others (Specify).	
9	Air Flow Time	10/ 20/30/40/60 seconds/ Other (Specify)	
10	Electrical Motor	IE2/ IE3/ Flame Proof.	

Walking is defined as a Progression of Steps where One Foot must always be in contact with the Ground. The Front Foot must make contact with the Ground before the Rear Foot can Leave the Ground. The Heel of the Foot must Touch the Ground First and the Toes must be the Last to Touch the Ground. Thus Walking is also called the "Heel and Toe" Sport.

While Walking the advancing Leg must be Straight.

According to World Book Encyclopedia, an expert Walker can Walk One Mile in 6.5 Minutes or say 4.1m/s. While as per Forces and Motion book, a Fast Walker can walk around 2m/s.

The Average Walking Speed of Older Pedestrians (65 or Older) is 4.11 Feet per Seconds, while for Younger Pedestrains is 4.95 Feet per Second. While Older Females have Slowest Walking Speed of 3.89 Feet per Second. Younger Females walk 0.32 Feet per Second Slower than Younger Males.

D J Thompson fastest Walker in 1958 walked at 3.3m/s, on 5th May 1981 Joseph Pribilinec walked at 4.42m/s and as of Jan 2001 Mikhail Shchennikov walked fastest at 4.60m/s.

AIR SHOWER IMAGES



Minimum 15 Seconds retention time is suggested to clean Dust off Personnel Clothes. As retention time increases, the amount of Dust also increases up to maximum at about 45 seconds. Thus for Large Human Traffic, Length of the Air Shower is increased to form a Tunnel. Air Shower Tunnels assist for Large Volumes to Walk through High Air Flow without waiting. Air Shower Tunnels are Multiple Sections together. The Doors may be or may not Interlocked/ Locked.



Last Updated on 19.11.2021