



PHARMA-ZENTRALE

Your specialists in probiotic- and
phyto-pharmaceuticals, biological APIs
as well as contract manufacturing

German Group of Companies

Long-standing established biological research, highly Active Pharmaceutical Ingredients and GMP-certified production — for your success in global markets

Pharma-Zentrale was founded in 1953 and is located in Herdecke, a historic trading place and picturesque city in the heart of North Rhine-Westphalia, Germany.

Even today the company is a family business, representing a group of subsidiaries, each one a successful specialist in its particular pharmaceutical or biotechnological businesses.

Our company group comprises BBT Biotech, Ardeypharm and Dr. Poehlmann & Co.

The services and cooperation we offer are highly valued by our customers across the globe.

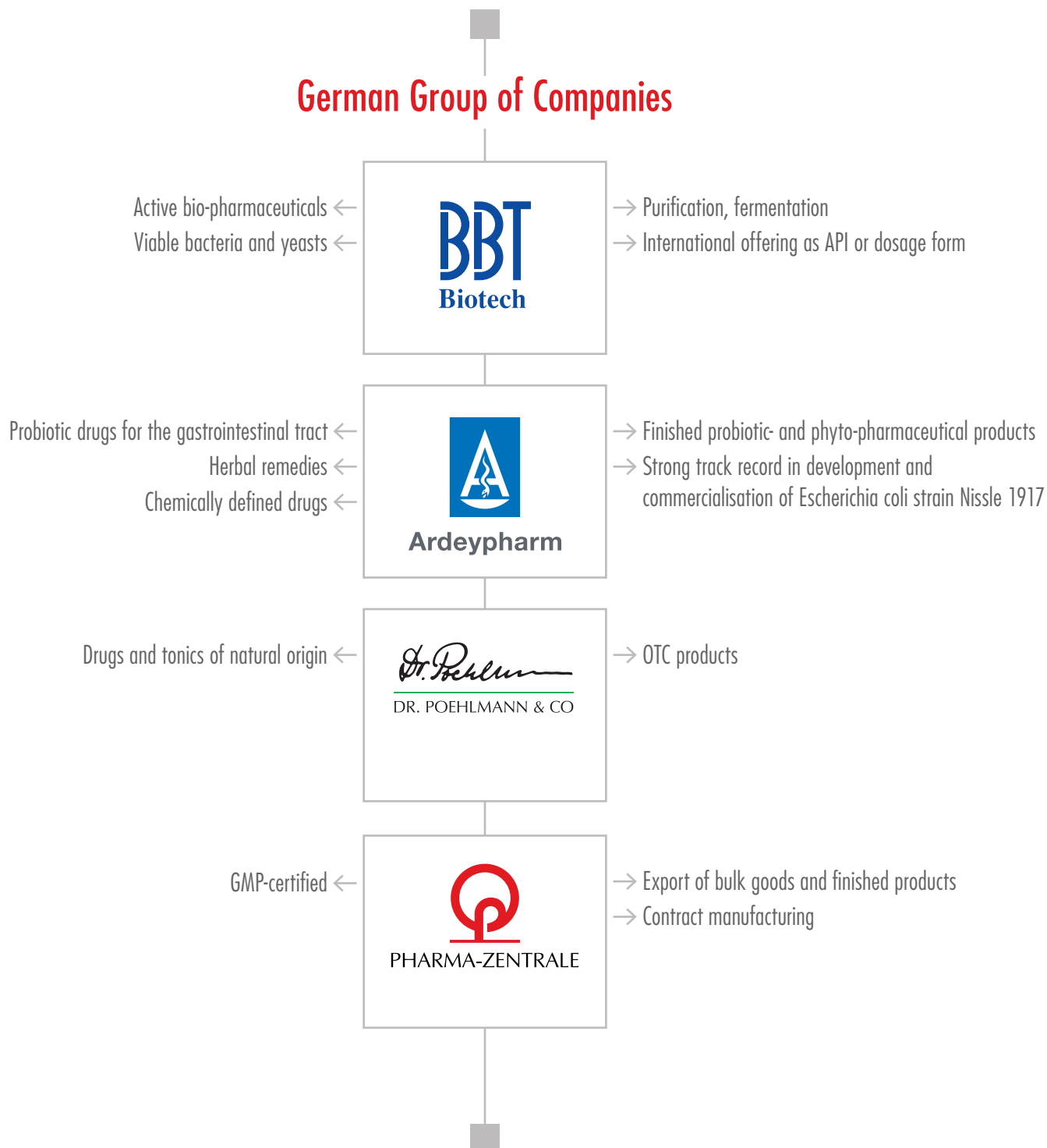
We implement life-cycle management in all aspects and fields of our pharmaceutical business.

Together with our partners, we will succeed in future business and regulatory challenges.



PHARMA-ZENTRALE

German Group of Companies





Highly purified Active Pharmaceutical Ingredients of biological origin

BBT Biotech, located in Baesweiler, Germany, is specialised in the development, manufacturing and international sales of Active Pharmaceutical Ingredients of biological origin.

Our key technologies include up to date and well-established manufacturing systems for a sophisticated range of viable bacteria and yeasts, special protein purification and separation methods (hormones, thrombolytic drugs) – all developed in-house.

BBT Biotech provides EU-GMP-certified manufacturing. We are able to deal with international regulatory requirements.

→ Multistage production facilities in Germany: Purification and fermentation

As a specialised manufacturer, we maintain strictly separated departments dedicated to protein purification and fermentation to prevent cross-contamination.

We are inspected and audited regularly by German and international health authorities as a manufacturer of pharmaceutically active compounds.

We offer several production steps combined with perfect process technology and state-of-the-art control systems.

Fermentation capacities range from 8 up to 18,000 litres. We use various types of downstream processes. In addition we are able to provide a special separation filtration system and freeze-drying of APIs.

Pharmaceutically active enzymes, hormones and proteins are isolated with high purity and according to applicable quality standards. State-of-the-art chromatographic and ultrafiltration equipment is handled by well-trained and experienced production staff.

Our products are isolated and purified from human, animal and non-GMO biological sources.

Active bio-pharmaceuticals

- Hormones
- Thrombolytic drugs
- Inhibitors
- Enzymes

Viable bacteria and yeasts

- Enterobacteria
- Bifidobacteria
- Lactobacilli
- Saccharomyces

→ International product range of APIs or dosage forms

Depending on customers' needs, our product range offers active bio-pharmaceuticals as APIs or dosage forms.

All our products have to pass GMP tests according to international pharmacopoeia standards for confirmation of their identity, purity and activity.

Certificates of analysis are provided accordingly. Please ask for your specific product solution. We are prepared for customised manufacturing and for new product developments.

Corresponding documentation can be provided to enable you to register pharmaceuticals based on BBT's active substances.

Fertility hormones, also in highly purified grade

- HCG (Human Chorionic Gonadotrophin)
- HMG (Human Menopausal Gonadotrophin)
- FSH (Follicle-Stimulating Hormone;
Urofollitrophin)

Thrombolytic drugs

- Streptokinase
- Urokinase

Inhibitors

- Aprotinin

Enzymes

- Hyaluronidase



Ardeypharm

All the best for human health

Ardeypharm, located in Herdecke, Germany, is a leading pharmaceutical specialist in development and manufacturing of probiotic drugs. Such as the clinical evidence-based drug Mutaflor®, which contains the world's unique non-pathogenic Escherichia coli strain Nissle 1917 as API.

The Ardeypharm product range is completed by a number of chemically and herbally defined drugs.



→ Finished probiotic drugs and phyto-pharmaceuticals

We are convinced that mother nature provides many effective drugs for the benefit of human health. Ardeypharm produces and distributes in Germany a wide range of probiotic and herbal medicinal products.

The product range, offered to physicians, pharmacists and patients, includes a number of chemically defined drugs that perfectly complement various therapeutic concepts.

→ Escherichia coli strain Nissle 1917

Ardeypharm is the company that managed the transfer of Escherichia coli strain Nissle 1917 from cultivation to fermentation. Based on the established GMP fermentation of E. coli strain Nissle 1917, Ardeypharm developed and registered modern pharmaceutical dosage forms as a biological drug.

Probiotic drugs for the gastrointestinal tract

- Escherichia coli strain Nissle 1917
- Saccharomyces cerevisiae HANSEN CBS 5926 (medical synonym S. boulardii)
- Lactobacillus acidophilus

Chemically defined drugs

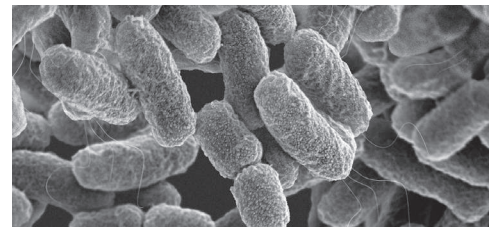
- Macrogol (plus electrolytes)
- Nystatin
- Tryptophan

Herbal remedies

- Refer to product list (see next pages)

→ Established research into the health-promoting role of the intestinal microbiota

Ardeypharm was one of the first companies to become aware of the importance of intestinal microbiota (formerly known as intestinal flora) for human health. Since 1971, we have continued research and development of the E. coli strain Nissle 1917 for medical purposes. Both, the human microbiota as well as the development of biological drugs remain the focus of our research. Our R&D department works closely with hospitals and universities elsewhere around the globe.





Dr. Poehlmann

DR. POEHLMANN & CO

OTC drugs and food supplements are following international pharmaceutical quality standards

Dr. Poehlmann & Co., based in Herdecke, Germany, offers OTC drugs, tonics and food supplements. These products have all been developed and produced according to the quality standards required for pharmaceutical products.

Products with beneficial health effects are becoming more and more important alongside curative treatments. Patients are requesting herbal remedies, e.g. our ginseng energy booster.

The products of Dr. Poehlmann & Co. are well known, thanks to their high quality. Dr. Poehlmann & Co. supplies pharmacies as well as drugstores.

→ Drugs, tonics and food supplements of natural origin

The most well-known brand from Dr. Poehlmann & Co. is Tai Ginseng®.

They are all medicinal products or nutritional supplements, made from natural substances and thus meet the demands of an ever-growing target group.

The active ingredients in the products of Dr. Poehlmann & Co. are Ginseng, Hawthorn, Thyme, Valerian and Hops, B Vitamins, Phospholipids from Soy Lecithin and Pepsin.

→ Tried and tested for more than 40 years: Tai Ginseng®

Dr. Poehlmann & Co. is producing Tai Ginseng® for more than 40 years — it was one of the first Ginseng products and is arguably the most well known in Germany.

In addition to Ginseng, Tai Ginseng® also contains vitamins of the B complex as well as Hawthorn. Hawthorn has been used for a long time in European herbal medicine. The balanced combination of high quality, pharmaceutical grade ingredients — Ginseng, Hawthorn and Vitamin-B complex — makes Tai Ginseng® a truly unique product in the market.





PHARMA-ZENTRALE

Best quality from selected active ingredients to the finished drug products

To achieve this high quality, our group of companies follows international standards for all steps of the production process — standards which go considerably beyond the statutory norms.

The quality level of the final product depends on the careful selection of starting materials. Standardised conditions of production and up-to-date technology ensure consistently high pharmaceutical quality.

Our Technical Department, Production, Laboratory and R&D as well as our Medical and Clinical Research Departments are continuously working on further improving quality, efficacy and safety of our products.

→ GMP-certified manufacturing in Germany

Pharma-Zentrale is continuously GMP-certified according to the Directive 2003/94/EC.

→ Contract manufacturing

With our broad range of GMP-compliant contract manufacturing services for the biotechnology and pharmaceutical industry (APIs, dosage forms, e.g. tablets, capsules and liquids, pharmaceuticals as well as food supplements) we supply several companies all over the world.

→ Export bulkware and finished products

We supply pharmaceutical bulk (liquid, semi-solid and solid forms). We offer a full service starting from the production of APIs using fermentation (according to Part II of the EU-GMP guidelines) followed by manufacturing of finished products, from mixing the APIs with excipients to encapsulation, bottling and packaging.



| Product | API | Dosage | Appearance |
|---------|-----|--------|------------|
|---------|-----|--------|------------|

HIGHLY PURIFIED FERTILITY HORMONES / FERTILITY HORMONES

| | | | |
|--------------|--|---|--|
| Hp-HCG / HCG | Highly purified / Human Chorionic Gonadotrophin | 1,500 I.U. 2,000 I.U. 5,000 I.U. 10,000 I.U. | - Frozen bulk - Powder - Dosage form |
| Hp-HMG / HMG | Highly purified / Follicle Stimulating Hormone + Human Luteinising Hormone (L.H.) (Human Menopausal Gonadotrophin) | 75 I.U. 150 I.U. | |
| Hp-FSH / FSH | Highly purified / Human Follicle Stimulating Hormone | 75 I.U. 150 I.U. | |

THROMBOLYTICA

| | | | |
|---------------|---------------|--------------------------------|--|
| Streptokinase | Streptokinase | 750,000 I.U. 1,500,000 I.U. | - Frozen bulk - Powder - Dosage form |
| Urokinase | Urokinase | 250,000 I.U. 500,000 I.U. | |

INHIBITORS

| | | | |
|-----------|------------------------------|---|---------------------------|
| Aprotinin | Pancreatic trypsin inhibitor | — | - Frozen bulk - Powder |
|-----------|------------------------------|---|---------------------------|

ENZYMES

| | | | |
|---------------|---|---|---------------------------|
| Hyaluronidase | Absorption of injected fluids increaser | — | - Frozen bulk - Powder |
|---------------|---|---|---------------------------|

VIABLE BACTERIA AND YEASTS

| | | | |
|----------------|--------------------------------|---|-------------------------------------|
| Bifidobacteria | — | — | Batch sizes up to several kilograms |
| Enterobacteria | e.g. Escherichia coli | | |
| Lactobacilli | e.g. Lactobacillus acidophilus | | |
| Saccharomyces | e.g. Saccharomyces boulardii | | |



Ardeypharm

| Product/API | API | General use | Commercial forms | Pack size | Average daily |
|-------------|-----|-------------|------------------|-----------|---------------|
|-------------|-----|-------------|------------------|-----------|---------------|

PROBIOTIC DRUGS

| | | | | | |
|-----------------------------|--------------------------------------|---|------------------------------|------------------------------------|--|
| Mutaflor® | E. coli strain Nissle 1917 | - Ulcerative colitis in the remission stage - Chronic constipation | Hard capsules | 20, 50 and 100 caps. | 2 x 1 caps. a day |
| Mutaflor® Suspension | E. coli strain Nissle 1917 | - Diarrhea in newborns, infants and children - Diarrhea in newborns, infants and children under tube feeding | Suspension | 5 and 25 x 1 ml 5 and 25 x 5 ml | 1–3 x 1 ml a day |
| Paidoflor® | Lactobacillus acidophilus | Small bowel disturbances, e.g. in case of constipation or diarrhea | Chewable tablets | 20, 50 and 100 tab. | 1–3 x 3 tab. a day |
| Yomogi® | Saccharomyces boulardii, lyophilised | Acute diarrhea (e.g. Antibiotic-associated diarrhea), Travelers' diarrhea | Hard capsules | 10, 20, 50 and 100 caps. | 1–2 caps. a day |
| Yomogi® 250 mg | Saccharomyces boulardii, lyophilised | Acute diarrhea | Hard capsules, gelatine-free | 10, 20, 50 and 100 caps. | Children aged 6 month to 2 years: 1–2 caps. a day* Children older than 2 years, and adults: 1–2 caps. a day |

* only under physician's supervision

CHEMICALLY DEFINED DRUGS

| | | | | | |
|---------------------|---|---|--|-----------------------|--|
| Adiclair® | Nystatin | Fungal infections (especially Candida) | Tablets | 20, 50 and 100 tab. | 3 x 2 tab. a day |
| | | | Suspension | 24 and 48 ml | 3–6 x 1–2 ml a day |
| | | | Ointment | 20, 50 and 100 g | 3 x a day |
| | | | Oral gel | 25 and 50 g | 4 x 1 g a day |
| Ardeytropin® | Tryptophan | Facilitates falling asleep in insomnia | Tablets | 20, 50 and 100 tab. | 1 x 2 tab. a day |
| Juniorlax® | Macrogol plus electrolytes (sodium chloride, sodium hydrogen carbonate, potassium chloride) | Chronic constipation in children aged 2 to 11 years | Powder for oral solution, single dose sachet | 10, 30 and 50 sachets | 2 to 6 years: 1 sachet 7 to 11 years: 2 sachets a day** |
| Mykotin® | Miconazolnitrate | Oral thrush | Oral gel | 20 and 50 g | 4 x 1 measuring spoon of gel a day |

** For the extended use, the daily dose should be adjusted according to individual response





Ardeypharm

| Product/API | API | General use | Commercial forms | Pack size | Average daily |
|-------------|-----|-------------|------------------|-----------|---------------|
|-------------|-----|-------------|------------------|-----------|---------------|

PHYTO-PHARMACEUTICALS

| | | | | | |
|------------------------|---------------------------------|--|----------------|-------------------------|--|
| Ardeycholan® | Artichoke leaf dry extract | Dyspeptic disorders | Hard capsules | 20, 50 and 100 caps. | 3 x 1 caps. a day |
| Ardeyhepan® | Milk thistle fruit dry extract | Adjuvant therapy of liver diseases and to protect liver from damage | Coated tablets | 20, 60 and 100 tab. | 2 x 2 tab. a day |
| Ardeynephron® | Java tea leaves dry extract | Adjuvant therapy of minor urinary complaints | Hard capsules | 20 and 50 caps. | 3–4 x 2 caps. a day |
| Ardeysedon® Nacht | Valerian and Hop dry extract | Difficulty falling asleep due to nervousness | Coated tablets | 50 and 100 tab. | 1 x 1 tab. a day |
| Doloteffin® | Devil's claw root dry extract | Supportive therapy of degenerative illnesses of the musculoskeletal system | Tablets | 10, 20, 50 and 100 tab. | 3 x 2 tab. a day |
| Orgaplasma® | Ginseng root dry extract | Feeling of weakness; lack of concentration and during convalescence | Coated tablets | 20, 50 and 100 tab. | 2 x 2 tab. a day |
| Passidon® | Passionflower herb dry extract | Nervousness, restlessness | Hard capsules | 50 and 100 caps. | 2 x 2 caps. a day |
| Plissamur® | Horse chestnut seed dry extract | Symptoms of peripheral chronic venous insufficiency | Coated tablets | 20, 50 and 100 tab. | 2 x 1 tab. a day |
| Tai Ginseng® Pastilles | Ginseng root dry extract | Invigoration tonic, declining capacity for work and concentration | Pastilles | 20 past. | 3–4 pastilles daily to be sucked or chewed |



| Product | API | General use | Commercial forms | Pack size | Average daily |
|--------------|---|--|------------------|-----------------|---|
| Cevitect® | Thyme herb dry extract | Cold related respiratory illness, persistent coughing, expectoration in acute bronchitis | Pastilles | 30 past. | Suck 3–4 pastilles, 3–4 times daily, one after the other |
| Pepsin Wine | Pepsin-powder. A natural product obtained from pigs | Improves stomach function | Liquid | 700 ml | 20 ml with each meal (3 times daily) |
| Tai Ginseng® | Ginseng root dry extract/powder, hawthorn leaf and flower dry extract, vitamins | Stimulating mind and body | Liquid | 500 ml | 5–15 ml, 3 times daily |
| | | Biological energy provider, Activates natural protection against stress | Coated tablets | 60 and 120 tab. | 2 coated tablets, 3 times or 3 coated tablets twice daily |





Pharma-Zentrale GmbH
Loerfeldstraße 20, 58313 Herdecke, Germany
Phone +49 2330 977-676, Fax -697
office@pharma-zentrale.de
www.pharma-zentrale.de



BBT Biotech GmbH
Arnold-Sommerfeld-Ring 28, 52499 Baesweiler, Germany
Phone +49 2401 933-100, Fax -1090
office@bbt-biotech.de
www.bbt-biotech.de



Ardeypharm

Ardeypharm GmbH
Loerfeldstraße 20, 58313 Herdecke, Germany
Phone +49 2330 977-677, Fax -697
office@ardeypharm.de
www.ardeypharm.com



Dr. Poehlmann & Co. GmbH
Loerfeldstraße 20, 58313 Herdecke, Germany
Phone +49 2330 977-678, Fax -697
office@dr-poehlmann.de
www.dr-poehlmann.de



Download
Product list