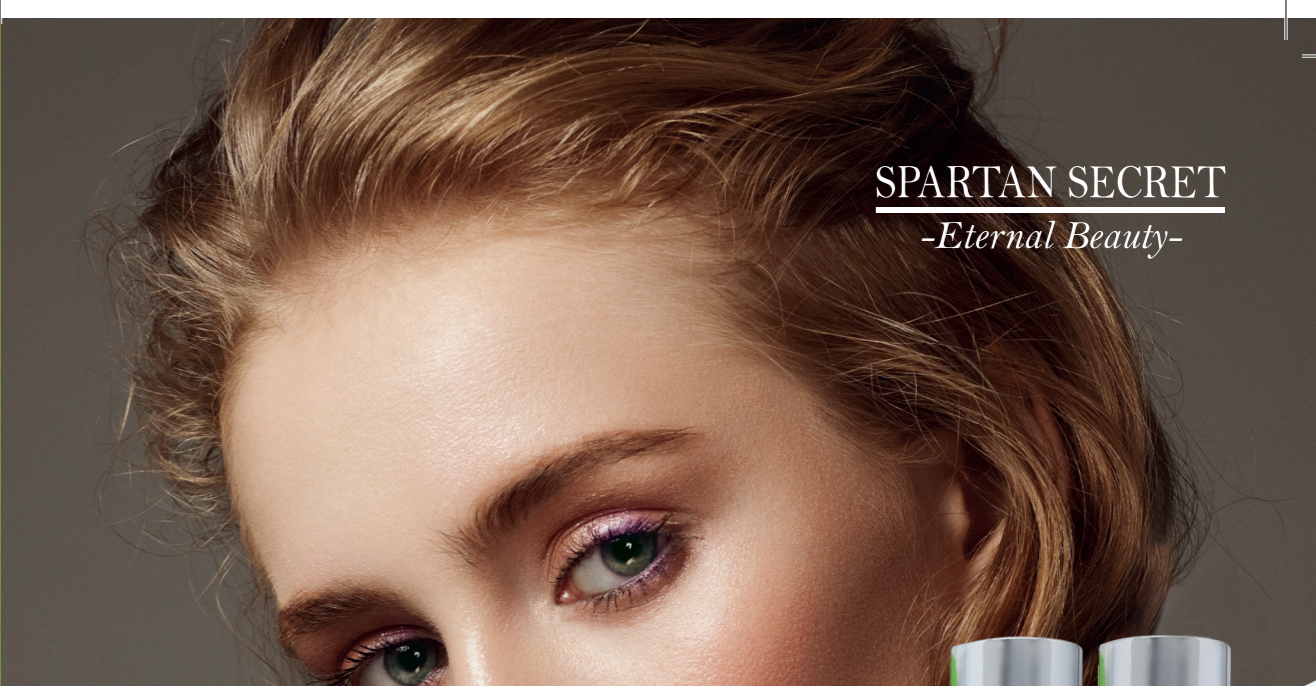




ADELCO S.A. PHARMACEUTICALS & COSMETICS INDUSTRY  
37 Pireos Str • 18346 Moschato • Athens • Greece  
T: +30 210 48 19 311 • info@adelco.gr • www.SpartanSecret.gr

SPARTAN SECRET  
-Eternal Beauty-





## SPARTAN SECRET

-Eternal Beauty-

## SPARTAN SECRET

-Eternal Beauty-

### MOISTURIZING DAY CREAM



Delicate, non-greasy day cream with a velvety smooth texture, spreads easily and absorbs quickly. Its perfectly balanced formula with active ingredients such as herbal extracts and oils, moisturizers and nourishes the skin. Creates a hydroprotective film, that maintains and protects the skin's natural moisture. Revitalizes and improves the appearance of the skin, offering a radiant face throughout the day. Ideal for all skin types.

*Moisturising Day Cream with Hyaluronic acid, Bisabolol, Chamomilla, Aloe Vera, Achillea, Crithmum, Calendula Extracts, Panthenol, Salvia Oil, Beeswax, Shea Butter*

### RICH MOISTURISING MASK



Rich Moisturising Face Mask with a creamy texture, containing strong moisturizing ingredients and herbal extracts. Provides immediate deep hydration and nourishment that lasts, while helping the skin retain its natural moisture. The skin is immediately hydrated and looks radiant, youthful and velvety soft.

*Rich Moisturising Mask with Hyaluronic acid, Chamomilla, Aloe Vera, Hypericum, Urtica Dioica Extracts, Hydrolyzed Cottonseed Protein, Panthenol, Salvia Oil*

### NOURISHING NIGHT CREAM



Luxurious cream that nourishes and rejuvenates the skin throughout the night. Its non-greasy texture spreads easily and absorbed quickly. Its perfectly balanced formula is enriched in active ingredients such as herbal extracts and oils, nourishes and moisturizes the skin. The skin is deeply moisturized and is softer, smoother, radiant and beautiful in the next morning.

*Nourishing Night Cream with Hyaluronic acid, Bisabolol, Chamomilla, Aloe Vera, Achillea, Crithmum, Hypericum, Urtica Dioica, Calendula Extracts, Panthenol, Salvia Oil, Beeswax*

### INTENSE HYDRATING GEL

Face & Neck Care Moisturizing and rejuvenating Gel with silky soft texture, intensively moisturizes and soothes the skin. The perfectly balanced composition with herbal extracts, oils, nourishing and hydrating ingredients creates a protective film, which maintain and restores the natural balance of skin's moisture, offering deeper hydration, more softness and natural beauty. The skin is radiant, toned and smoothed just after a single use.

*Intense Hydrating Gel with Hyaluronic acid, Chamomilla, Aloe Vera, Achillea, Origanum, Urtica Dioica Extracts, Panthenol, Salvia Oil*



### SOFT PEELING MASK

Peeling mask with natural Olive Seed Granules, botanical extracts with soft and silky texture. Cleanses the skin gently and effectively exfoliates the face, facilitating the removal of dead skin cells, of pollutants and greasiness, while helping cell rejuvenation.

The skin acquires a unique softness, moisture and natural radiance.

*Soft Peeling Mask with Olive Seed Granules, Chamomila, Aloe Vera, Hydrolyzed Cottonseed Protein, Hypericum, Urtica Dioica, Panthenol, Salvia Oil*



Crithmum Maritimum

Hypericum Perforatum

Chamomilla

Hyaluronic acid

Achillea Millefolium

a-bisabolol

Beeswax

