

# Summary **PRODUCT CATALOG**

---



Bone and  
Joint health



Nervous System  
Line



Nutrition  
Line



Wellness  
Line



Ocular  
Line



# artilane<sup>®</sup>

## OSTEOARTICULAR

### CLASSIC

**COMPOSITION:** Enzymatically hydrolysed collagen of high purity, Hyaluronic acid, Magnesium, Zinc and Antioxidants: Lycopene, Coenzyme Q10, Quercetin and Vitamin C.

#### PRESENTATION:

Box of 15 single-dose vials of 30 ml  
Box of 30 sachets of powder **NEW!**  
900 ml bottle  
300 g powder

#### INDICATED FOR:

- Joint discomfort
- Mild Osteoarthritis (grade I and II)
- Collagen supplementation

**SHELF LIFE:** 3 years

### FORTE

**COMPOSITION:** Glucosamine, Chondroitin, Enzymatically hydrolysed collagen of high purity, Boswellia, Hyaluronic acid, Magnesium, Zinc and Antioxidants: Lycopene, Coenzyme Q10, Quercetin and Vitamin C.

#### PRESENTATION:

Box of 15 single-dose vials of 30 ml  
Box of 30 sachets of powder **NEW!**  
900 ml bottle  
300 g powder

#### INDICATED FOR:

- Inflammatory joint pain
- Advanced Osteoarthritis (grade III till IV)

**SHELF LIFE:** 3 years

REINFORCE

REPAIR



#### RECOMMENDED DOSAGE

- Vials: take 1 vial per day diluted in half a glass (100 mL) of water.
- Bottle: take one dosing cup (30 mL) per day, directly or diluted in half a glass (100 mL) of water.
- Powder: take one measuring cup (25ml) per day, diluted in half a glass (100 mL) of water.



# OSTEOARTICULAR

## EFFICACY AND TOLERANCE OF ORAL CHONDROPROTECTIVES CONTAINING HYALURONIC ACID AND HYDROLYSED COLLAGEN ON JOINT FUNCTIONALITY IN ACTIVE INDIVIDUALS WITH OSTEOARTHRITIS OF THE KNEE.

Dr Rafael Llopis Miró<sup>a</sup> – Dr Fernando Delgado Velilla<sup>b</sup> – Dr Juan de Miguel Sáenz<sup>b</sup>

<sup>a</sup>Hospital San Francisco de Asís (Madrid) – <sup>b</sup>Hospital Nuestra Señora Del Rosario (Madrid)

CLINICAL  
STUDY OF ARTILANE®  
USE IN OSTEOARTHRITIS  
OF THE KNEE

### INTRODUCTION

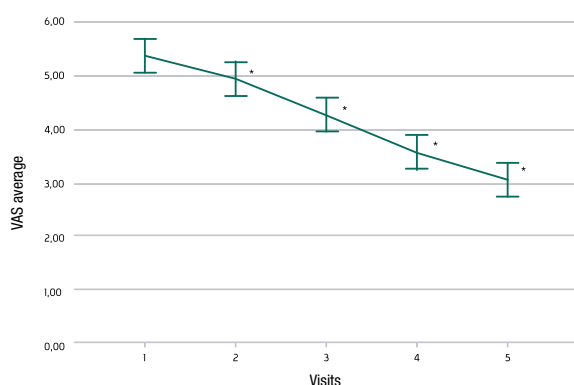
This study examined the efficacy and tolerance of the daily administration of an oral chondroprotective containing hyaluronic acid (HA) and hydrolyzed collagen (HC) on joint function and associated pain, in active individuals affected by osteoarthritis of the knee

### MATERIAL AND METHODS

- A phase IV, multi-centred, open and non-comparative exploratory study.
- Patients: 108 subjects with osteoarthritis of the knee who performed daily physical activity.
- Dosage: ARTILane® for 90 consecutive days.
- Evaluations: At 0, 15, 30, 60 and 90 days.
- Clinical evaluation of joint function and pain was performed using the WOMAC index for physical functioning and stiffness, a visual analogue scale (VAS) for pain, and the opinion of the physician and the patient.

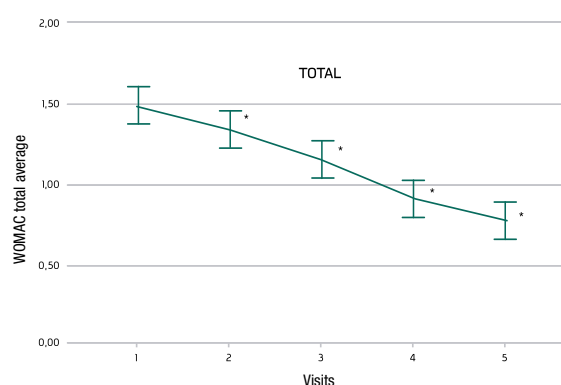
### RESULTS OF THE STUDY

#### Visual Analogue Scale (VAS) Evolution of pain (average of VAS)



\* $p < 0.01$ ,  
Pairwise comparison in relation to the first visit (Bonferroni method). From the second visit, there was a statistically significant reduction in joint pain compared to baseline.

#### Outcome for patients after treatment WOMAC scale results (total)



\* $p < 0.01$ ,  
Progressive decline from the initial visit (statistically significant in all parameters as of the 2nd visit). WOMAC: Western Ontario and MacMaster Universities Osteoarthritis Index.

### CONCLUSIONS

1. Oral administration of ARTILane® for 90 consecutive days was effective in the **reduction of pain** in patients with osteoarthritis of the knee.
2. The mean of all efficacy evaluations (VAS, WOMAC scales, researcher and patient evaluation) in the various visits indicates a **clear improvement from day 15**.
3. The treatment was **well tolerated** throughout the entire study.

OPKO Health  
Iberoamerica



# PROGEN<sup>®</sup>

PLACTIVE<sup>®</sup>

**INNOVATIVE FOOD SUPPLEMENT FOR ADEQUATE MUSCULOSKELETAL NUTRITION (JOINTS, MUSCLES, TENDONS, LIGAMENTS, FASCIA AND BONES).**

**COMPOSITION:** Plasma proteins (growth factors), HC-15 (hyaluronic acid and chondroitin sulphate complex), Bioactive collagen peptides and Vitamin C.

**PRESENTATION:**

Box containing 30 sachets of powder **NEW!**

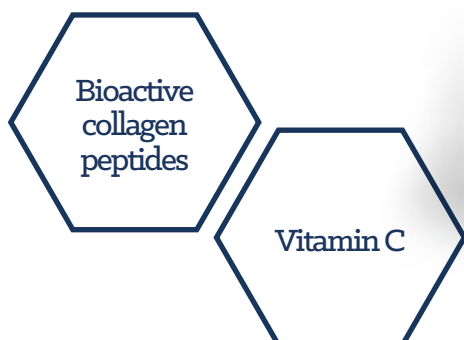
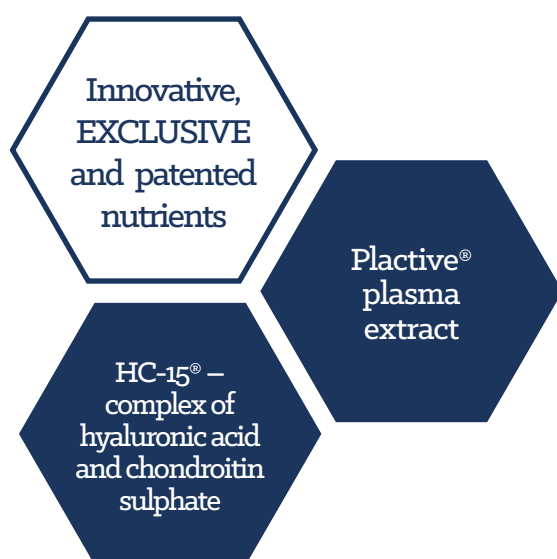
**RECOMMENDED DOSAGE:**

Take one sachet per day dissolved in a glass of water

**INDICATED FOR:**

- Prevention and recovery of musculoskeletal injuries and severe degenerative processes
- Reduction of pain and structural degeneration
- Improving mobility
- Post-surgery recovery

**SHELF LIFE:** 2 years



# OSTEOARTICULAR

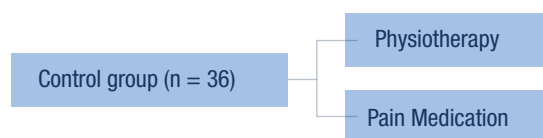
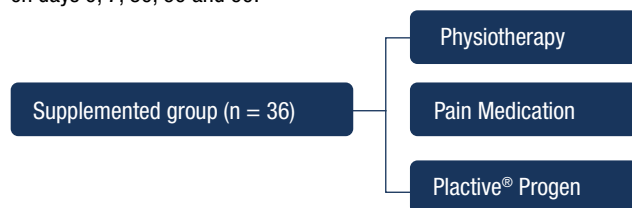
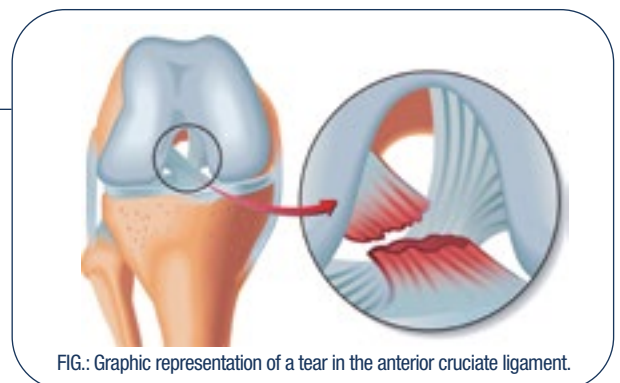
## EFFICACY AND TOLERABILITY OF AN ORAL SUPPLEMENT BASED ON COLLAGEN, HC-15 AND PLASMA PROTEINS IN THE RECOVERY OF THE ANTERIOR CRUCIATE LIGAMENT.

López-Vidriero E, Olivé-Vilas R, López-Capapé D, et al. Efficacy and Tolerability of Progen, a Nutritional Supplement Based on Innovative PlasmaProteins, in ACL Reconstruction. Orthop J Sports Med. 2019 Feb; 7(2).

A prospective randomised controlled multicentre study in patients who have undergone reconstructive surgery after complete or partial tear of the anterior cruciate ligament.

This injury was chosen as a serious and homogeneous traumatic model.

The study population is divided into two groups, one group supplemented with Plactive® Progen and a control group. In both groups, a rehabilitation treatment using physiotherapy and analgesics is used, the only difference between the groups being the treatment of one group with Plactive® Progen administered in one sachet every day for 90 days. 5 follow-up visits are carried out in both groups on days 0, 7, 30, 60 and 90.



### RESULTS OF THE STUDY

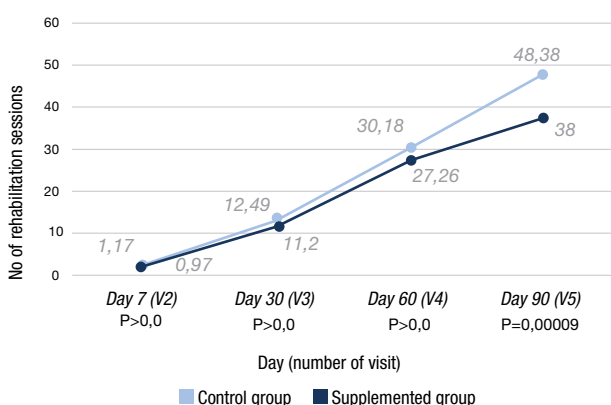
- Patients in the group supplemented with Plactive® Progen required significantly fewer rehabilitation sessions compared to the control group at 90 days (visit number 5) ( $P=0.00009$ ). The high-level objective of rehabilitation was considered to be complete extension, 150° flexion and knee functionality according to the IKDC index.

Significant reduction of rehabilitation sessions

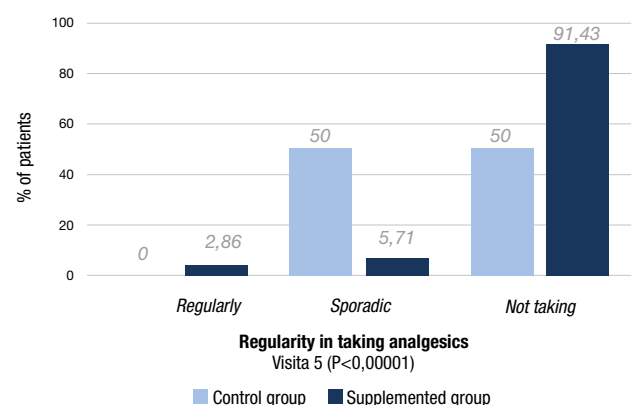
- A significant reduction ( $P<0.00001$ ) of analgesic consumption in the group supplemented with Plactive® Progen compared to the control was observed during the recovery process, with **91.43%** of patients in the supplemented group not taking analgesics at the end of the study.

Significant reduction of analgesic consumption

#### Number of rehabilitation sessions performed



#### Frequency of consumption of analgesics at the fifth visit (90 days)



- A different development of the integration of the graft measured on nuclear magnetic resonance (NMR) was observed, with higher graft maturity on average in the supplemented group.





**NUTRITIONAL AID IN CASE OF DISCOMFORT DUE TO PERIPHERAL NERVE INJURY CAUSED BY NERVE COMPRESSION, IMPINGEMENT OR IRRITATION.**

**COMPOSITION:** UMP (Uridine 5-Monophosphate), Quinones (pyrroloquinoline quinone), Polyphenols, Magnesium, L-methylfolate (folic acid), Apple extract and Vitamin B12.

**PRESENTATION:** Box with 30 tablets

**RECOMMENDED DOSAGE:** Take 1 or 2 tablets a day

**INDICATED FOR:**

- Back pain
- Cervical pain
- Neuralgia
- Radicular pain (cervical radiculopathy, lumbosacra)
- Sciatica
- Peripheral neuropathic pain

**SHELF LIFE:** 4 years

NEURONAL  
REGENERATION AND  
REMYELINIZATION

REDUCTION  
OF BACK PAIN



# NERVOUS SYSTEM

## ONE STEP FURTHER IN PERIPHERAL NEUROPATHY

### ○ COMPONENT OF STRUCTURES OF THE MYELIN SHEATH: ○

- **UMP (URIDINE 5-MONOPHOSPHAT):**

Uridine supplementation is a nutritional aid for the **regeneration of peripheral nerves and contributes to the reduction of pain.**

### ○ VITAMINS OF GROUP B: ○

- **VITAMIN B12 (CYANOCOBALAMIN):**

Deficiency is associated with loss of myelin from peripheral nerves, essential for good impaired nerve conduction in injured nerves. Vitamin B12 contributes to the normal **functioning of the nervous system.**

- **FOLIC ACID (VITAMIN B9):**

**Essential for the synthesis of nucleotides such as uridine** and multiple metabolic processes. Our body is not able to produce it so it must be obtained from the diet.

### ○ AND OTHER FUNCTIONAL PAIN RELIEF INGREDIENTS: ○

- **MAGNESIUM:**

Magnesium contributes to the **normal functioning of the nervous system.**

- **PYRROLOQUINOLINE QUINONE:**

Obtained from an apple extract, it is an innovative **natural neuroprotective** that modulates cellular mitochondrial function essential in obtaining energy and it **helps** to reduce the production of pro-inflammatory substances and therefore to the **reduction of pain.**



## TRIPLE ACTION



NEUROPROTECTION

NUTRITION OF THE  
NERVOUS SYSTEM

MAINTENANCE OF THE  
FUNCTIONAL ACTIVITY

# NUTRITION FOR ALL THE FAMILY

## Active YOGURT FLAVOUR



### WHEN?

Season changes.  
Immune system.  
Gut flora.



### ENHANCE YOUR DEFENSES WITH L. CASEI.

GROUP B VITAMINS (B1 AND B6), WHICH CONTRIBUTE TO NORMAL FUNCTIONING OF THE IMMUNE SYSTEM. WITH LIVE LACTIC CULTURES, FRUCTOOLIGOSACCHARIDES AND FRESH ROYAL JELLY.

#### PRESENTATION:

Display box containing 60 bars individually wrapped

**RECOMMENDED DOSAGE:** Take 1 or 2 bars per day

**SHELF LIFE:** 2 years



AVAILABLE NEW  
PRESENTATION  
SUGAR FREE

## Energy STRAWBERRY FLAVOUR



### WHEN?

Physical activity.  
Tiredness.  
Lifestyle.



### NEVER RUN OUT OF ENERGY, WITH FRESH ROYAL JELLY.

GROUP B VITAMINS (B1 AND B6) FOR AN EXTRA SHOT OF ENERGY. FREE OF STIMULANTS.

#### PRESENTATION:

Display box containing 60 bars individually wrapped

**RECOMMENDED DOSAGE:** Take 1 or 2 bars per day

**SHELF LIFE:** 2 years



AVAILABLE NEW  
PRESENTATION  
SUGAR FREE

## Sapiens COLA FLAVOUR



### WHEN?

Exams.  
Memory.  
Stress.



### POWER YOUR MIND, WITH CHOLINE AND OMEGA 3, 6 & 9

VITAMIN B5 FOR A CORRECT INTELLECTUAL PERFORMANCE. WITH VITAMINS C, B1, B3, B6 AND B12, CHOLINE, LINOLENIC ACID (OMEGA 3), LINOLEIC ACID (OMEGA 6), OLEIC ACID (OMEGA 9), FOLIC ACID, BIOTIN AND ZINC.

#### PRESENTATION:

Display box containing 60 bars individually wrapped

**RECOMMENDED DOSAGE:** Take 1 or 2 bars per day

**SHELF LIFE:** 2 years







# ADULT NUTRITION

# Lacsure®

## CONTRIBUTES TO NUTRITION IN ADULTS THAT REQUIRE ADDITIONAL NUTRITIONAL SUPPORT

**COMPOSITION:** Linoleic acid (Omega 6), A-linoleic acid (Omega 3), Choline, Fructooligosaccharides (FOS), Inulin. **Vitamins:** Vitamin A, Vitamin D, Vitamin E, Vitamin K, Vitamin C, Folic Acid, Vitamin B1, Vitamin B2, Vitamin B6, Vitamin B12, Niacin, Pantothenic acid, Biotin, **Minerals:** Calcium, Phosphorous, Magnesium, Iron, Zinc, Manganese, Copper, Iodine, Chromium, Molybdenum, Selenium.

**PRESENTATION:** : Oral powder.

### RECOMMENDED DOSAGE:

Pour 4 scoops (56 g) into one glass of water each day.

### INDICATED FOR:

- Food supplement which, thanks to its composition, contributes to nutrition in adults who lack energy, need recovery, have muscle weakness, are losing weight unintentionally and all of those situations that require additional nutritional support.

**SHELF LIFE:** 2 years



THE HELP  
YOU NEED TO  
MAINTAIN YOUR  
STRENGTH AND  
VITALITY

# WELLNESS

## SEREDAN<sup>®</sup>-3

**HELPS TO FALL ASLEEP, MAINTAINS THE NATURAL SLEEP CYCLE AND ENSURES A PLEASANT AWAKENING**

**COMPOSITION:** Glycine, GABA from rice seed extract, Valerian, Melatonin and Vitamins B3, B6 and B12.

**PRESENTATION:** : Box containing 30 double layered tablets.

**RECOMMENDED DOSAGE:** Take a tablet 30 minutes before going to bed.

**INDICATED FOR:**

- Difficulty falling asleep
- Maintaining natural sleep cycle
- Enhancing pleasant awakening

**SHELF LIFE:** 2 years





## NEW LAUNCHES

# CoVitality®



### INNOVATION IN IMMUNITY AND DEFENSE

**COMPOSITION:** Vitamin C, Lactoferrin, *Bifidobacterium lactis* BI-04, Selenium, Zinc, Vitamin D, Vitamin B12, Vitamin B6.

**PRESENTATION:** 30 Tablets.

**RECOMMENDED DOSAGE:** 1 tablet per day.

#### INDICATED FOR:

- Helps to maintain the correct functioning of the immune system.

**SHELF LIFE:** 2 years

ARAMA  
**FLUIDVEN®**  
Light legs

### HELPS TO DECREASE THE RIGIDITY OF THE VENOUS WALLS AND TO RESTORE THE SENSATION OF LIGHT LEGS

**COMPOSITION:** Diosmin, Hesperidin, Dried butcher's-broom bark extract, Maqui fruit extract (*Aristotelia chilensis*), Dried *Styphnolobium japonicum* flower extract, Dried horse chestnut seed extract, Dried vine leaf extract, Vitamin C.

**PRESENTATION:** 120 tablets.

#### RECOMMENDED DOSAGE:

Take 2 tablets a day.

#### INDICATED FOR:

- Venous circulation
- Relieves the feeling of heaviness in the legs
- Reduces swelling and refreshes
- Antioxidant

**SHELF LIFE:** 2 years







## DRY EYES AND ALLERGIES

**COMPOSITION:** Hyaluronic acid (0.15 %),  
*Aloe vera* (10 %), *Centella asiatica* (10 %).

### PRESENTATIONS:

**NEO** - Multidose bottle with 10 ml sterile solution, with  
APTAR® filter system.

**RECOMMENDED DOSAGE:** Apply 1 drop to each eye

**SHELF LIFE:** 3 years (3 months once opened)

**MEDICAL DEVICE CLASS II B**

**SINGLE-DOSE** - Pack with 10 sterile 0.5 ml single-dose  
containers

**RECOMMENDED DOSAGE:** Apply 1-2 drops to each eye

**SHELF LIFE:** 3 years (12 hours once opened)

**MEDICAL DEVICE CLASS II B**

Preservative-free  
solutions

Suitable  
for contact  
lenses



**Improved  
formulation:**  
Paraben-free  
Softer and more  
elastic wipe

# HEALTH & VISION



MEDICAL DEVICE CLASS III

## AGE-RELATED DRY EYES AND EYE DEGENERATION

**COMPOSITION:** N-acetylcarnosine (1%), *Vaccinium myrtillus* extract, Chondroitin sulphate (0.15 %)

**PRESENTATION:**

NEO - Multidose bottle with 10 ml sterile solution, with APTAR® filter system

**RECOMMENDED DOSAGE:** Apply 1 drop to each eye

**SHELF LIFE:** 3 years (3 months once opened)



MEDICAL DEVICE CLASS II B

## IRRITATED AND TIRED EYES

**COMPOSITION:** Eyewort (8 %), Green tea (8 %), Camomile (8 %), Witch Hazel (8 %).

**PRESENTATION:**

**SINGLE-DOSE** - Pack with 10 sterile 0.5 ml single-dose containers

**RECOMMENDED DOSAGE:** Apply 2-3 drops to each eye

**SHELF LIFE:** 3 years (12 hours once opened)



# HEALTH & VISION



## AGE-RELATED MACULAR DEGENERATION (AMD)

**COMPOSITION:** Saffron extract, Taurine, UMP, Lutein, Zeaxanthin, Vitamins C, E and B2, Zinc and Copper.

**PRESENTATION:** Box with 30 sachets of powder

**RECOMMENDED DOSAGE:** Take 1 sachet per day with a meal and dissolve it in 150 mL of watery

**SHELF LIFE:** 2 years

**Triple Neuroprotective action that slows the disease's progression:**

- Antioxidant
- Protection against toxicity caused by glutamate
- Regeneration of retinal cell membranes



Thanks to its  
innovative composition:

Acts in early and intermediate  
stages of AMD

Decreases the risk of  
developing advanced  
AMD

UTILITY  
CLINICAL  
STUDY  
ONGOING

**OPKO Health**  
Iberoamerica





## EXALO®

Latanoprost

### OPHTHALMIC ANTIGLAUCOMATOUS

**COMPOSITION:** Latanoprost 0.04 mg (vehicle cbp 1 ml)

**PRESENTATION:** 2.5 ml or 3.5 ml ophthalmic solution

#### RECOMMENDED DOSAGE:

Apply one drop to the conjunctival sac of both eyes once a day, preferably at night. In case you forget to administer a dose, the next day you should continue the treatment with the next dose on a regular basis. The dose should not exceed one drop per day.



Treatment  
for elevated IOP,  
open-angle  
glaucoma

## CONVISS®

TRAVOPROST

### OPEN-ANGLE GLAUCOMA AND OCULAR HYPERTENSION

**COMPOSITION:** Travoprost 0.04 mg, c.b.p. vehicle 1.00 ml

**PRESENTATION:** Box with dropper bottle with 2.5 ml of ophthalmic solution

#### RECOMMENDED DOSAGE:

The recommended dosage is one drop in the conjunctival sac of both eyes once a day; preferably at night. In case a dose is missed, treatment should be continued the next day with the next dose on a regular basis. The dose should not exceed one drop daily. Travoprost can be used in combination with other Glaucoma products. If other topical ophthalmic products are being used, administer at least 5 minutes apart.



## LINZAUG®

HIALURONATO DE SODIO

### SYMPTOMS DRY EYE DISEASE

**COMPOSITION:** Sodium hyaluronate 4 mg, Vehicle cbp 1.0 ml

**PRESENTATION:** Box with dropper bottle with 10 ml

#### RECOMMENDED DOSAGE:

The dose is 2 drops in each eye, applied every 4 to 6 hours, although it can vary depending on the needs of each patient.



## SharOf f

### STATES OF MILD EYE IRRITATION

**COMPOSITION:** Naphazoline Hydrochloride 1.0 mg, Vehicle cbp 1.0 ml

**PRESENTATION:** Box with dropper bottle with 15 ml

#### RECOMMENDED DOSAGE:

In adults, apply one or two drops of SHAROF F in the conjunctival sac every 3 or 4 hours.



Please refer to the SPC of the products for further information. Products under medical Prescription. Exclusive material for health professionals.

# INNOVATION IN HEALTHCARE TO SHARE WITH OUR PARTNERS

**OPKO** Health  
Iberoamerica

OPKO Health Iberoamerica is a division of the multinational OPKO Health Inc, with different offices in Europe (Spain) and Latin America (Chile, Uruguay, Brazil and Mexico).

The group has two production plants located in Spain (*food supplements*) and Mexico (*pharmacological products*) where the products are prepared to be marketed internationally.

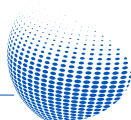
Our presence in different offices around the world allow us to seek global excellence through local commitment.

Through our network of partners we are currently distributing our products in more than 30 countries worldwide, with the goal of increasing this number quickly in the coming years.

We are committed to continuous innovation through the development of products and new technologies that contribute to improve the health of people and pets.

**OPKO** Health  
Iberoamerica

*Global Excellence, Local Commitment*



## Address

Pl. Europa 13-15, Local 2  
08908 L'Hospitalet de Llobregat, Barcelona, Spain

## Export Department Contact

export.opkohealth@opko.com  
[www.opkoeurope.com](http://www.opkoeurope.com)



Company ISO 9001:2008 certified  
by the TÜV Rheinland Group



Conformity according to cGMP  
(Current Good Manufacturing Practice)



Scan the QR code  
to download the  
complete catalog

*Follow us!*



[www.aramanatural.es](http://www.aramanatural.es)



[@aramanaturalespana](https://www.instagram.com/aramanaturalespana)



[@aramanaturalespana](https://www.facebook.com/aramanaturalespana)



[Arama Natural España](https://www.youtube.com/Arama Natural España)

The information contained in this document is only for health professionals.

MK\_F0\_0483