

Nature is the art of God and science is the accomplishment of man...
Integrating them is the pinnacle in healthcare!

Our work is our passion!

This is what motivates us to go an extra mile and come up with innovative and high quality products to meet the dynamic global health needs. Our work is not only focused on the integration of nature and science but to achieve excellence, so that we can establish exceptional quality standards across boundaries. Our commitment and sincerity towards our clients, channel partners and stakeholders, define our international business strategy.

Manufacturing Facilities



The Goodness of Nature &
The Innovation of Science is
QUINTESSENTIAL

Integrating the Best of Nature with the Brilliance of Science

Endowed with the most extraordinary and fascinating elements, nature is known to be the best healer. At Sanat Products Ltd., we bring the magnificence of nature and the innovation of science together, so that "healthy" can be added to your "living".

Since 1984, we have been committed to developing, manufacturing and delivering a growing portfolio of standardised herbal extracts, Spirulina, phytochemicals, nutraceuticals and cosmeceuticals. This idea was conceived by our Chariman, Mr. Pradip Burman, who is also the whole-time Director of Dabur India Limited, a company with 130-years-old heritage of looking after mankind. We offer quality and standardised herbal extracts which are manufactured in our state-of-the-art facility that has cGMP, ISO 9001:2008 and HACCP certifications.

Over the past three decades, we have achieved an impeccable track record of exporting standardised herbal extracts to various technologically advanced markets across the globe. Being equipped with the best talent and facilities, we exercise the highest standard of quality at every step. We aim to provide customer satisfaction with integrity.



Meeting Health Challenges
with **Assured Quality** and
Herbal Innovations



Certifications



Cosmoceutical Ingredients

S. No.	Product (Botanical Name)	Bio-Markers and Limits	Testing Method	Major Application
1.	Amla extract powder (<i>Embilica officinalis</i>)	Tannin NLT 40%	Gravimetric	Hair care especially to get long and lustrous hair
2.	Amla liquid extract (<i>Embilica officinalis</i>)	Tannin NLT 5%	Gravimetric	Hair care especially to get long and lustrous hair
3.	Bhringraj extract (<i>Eclipta alba</i>)	Bitters NLT 2%	Gravimetric	Hair care to promote the growth of healthy and strong hair
4.	Bhringraj liquid extract (<i>Eclipta alba</i>)	Bitters NLT 0.5%	Gravimetric	Hair care to promote the growth of healthy and strong hair
5.	Boswellia extract powder (<i>Boswellia serrata</i>)	Boswellic Acid NLT 75%	Gravimetric	Anti-inflammatory
6.	Brahmi extract (<i>Bacopa monnieri</i>)	Bacosides NLT 10%	HPLC	Hair care especially to get luxuriously long and shiny hair
7.	Centella extract (<i>Centella asiatica</i>)	Asiaticosides NLT 10% & Total Triterpenes NLT 40%	HPLC	Skin conditioning agent, supports wound healing, supports circulation, supports texture, skin integrity
8.	Coffee bean extract (<i>Coffea arabica</i>)	Total Chlorogenic acid NLT 60%	HPLC	Antioxidant, anti-aging, hair care
9.	Licorice extract (<i>Glycyrrhiza glabra</i>)	Glycyrrhizic Acid NLT 20%	HPLC	Skin conditioning & smoothening
10.	Hibiscus liquid extract (<i>Hibiscus rosa-sinensis</i>)	Mucilage NLT 10%	Gravimetric	Natural hair colorant
11.	Neem extract powder (<i>Azadirachta indica</i>)	Bitters NLT 5%	Gravimetric	Antiseptic
12.	Neem liquid extract (<i>Azadirachta indica</i>)	Bitters NLT 0.5%	Gravimetric	Antiseptic
13.	Pomegranate extract (<i>Punica granatum</i>)	Ellagic Acid NLT 40%	HPLC, UV	Antioxidant, skin lightening
14.	Shikakai liquid extract (<i>Acacia concinna</i>)	Saponin NLT 10% & 20%	Gravimetric	Natural surfactant, hair care
15.	Tulsi extract powder (<i>Ocimum sanctum</i>)	Tannin NLT 10%	Gravimetric	Skin care to avoid acne and pimples
16.	Tulsi liquid extract (<i>Ocimum sanctum</i>)	Tannin NLT 0.5%	Gravimetric	Skin care to avoid acne and pimples
17.	White curcumin (<i>Curcuma longa</i>)	Tetra-hydro curcuminoids NLT 95%	HPLC	Skin whitener, antioxidant

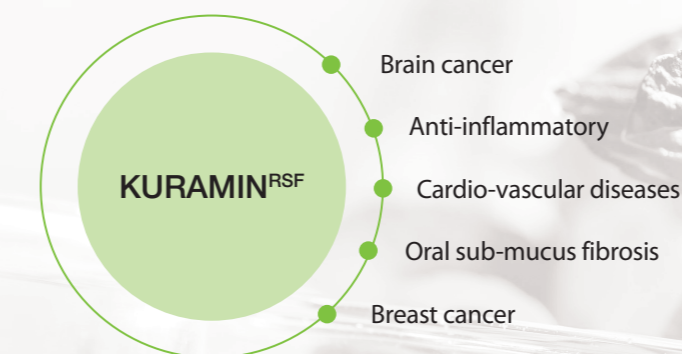
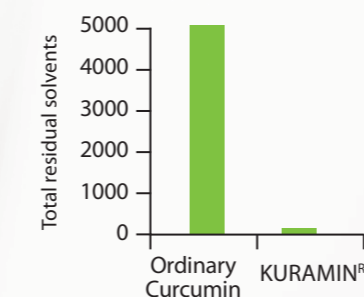
Research & Development

Our research team is a professionally managed group comprising members with doctorates in various disciplines. With an innovative approach we continually explore newer avenues, be it products, technology, competition, etc. We also conduct biological efficiency, bioavailability studies and mechanism-based drug indications to meet the real needs of medicine today with a definite concept, programme and development that differentiates us.

Sanat is focused on developing cutting-edge intellectual property as a core value differentiator. Among its wide range of products, Sanat has recently introduced KURAMIN^{RSF} (Curcumin residual solvent free – Indian patent applied) and AKBA Forte (3-O-acetyl-11-keto-beta-boswellic acid 40%).

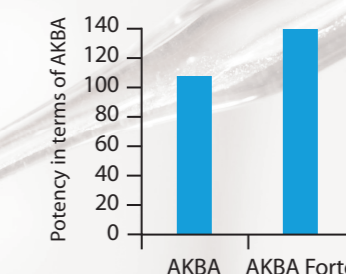
KURAMIN^{RSF}

Sanat has developed, by its own patent applied processes a novel ingredient Kuramin^{RSF}, which possesses total residual solvents less than 50 ppm while in other Curcumin 95% it is around 5000 ppm

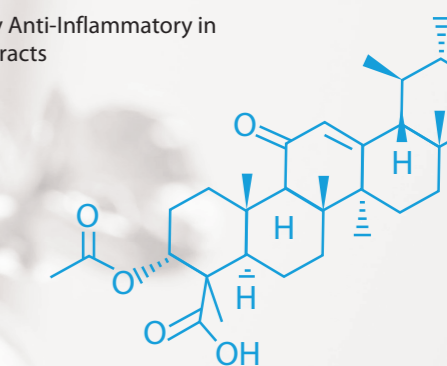


AKBA Forte

Sanat has brought Boswellia marker AKBA with a patent product "AKBA Forte" which is 33% more potent than any other AKBA. Our brand, AKBA Forte, contains 40% AKBA where as others contain a max. 30%.



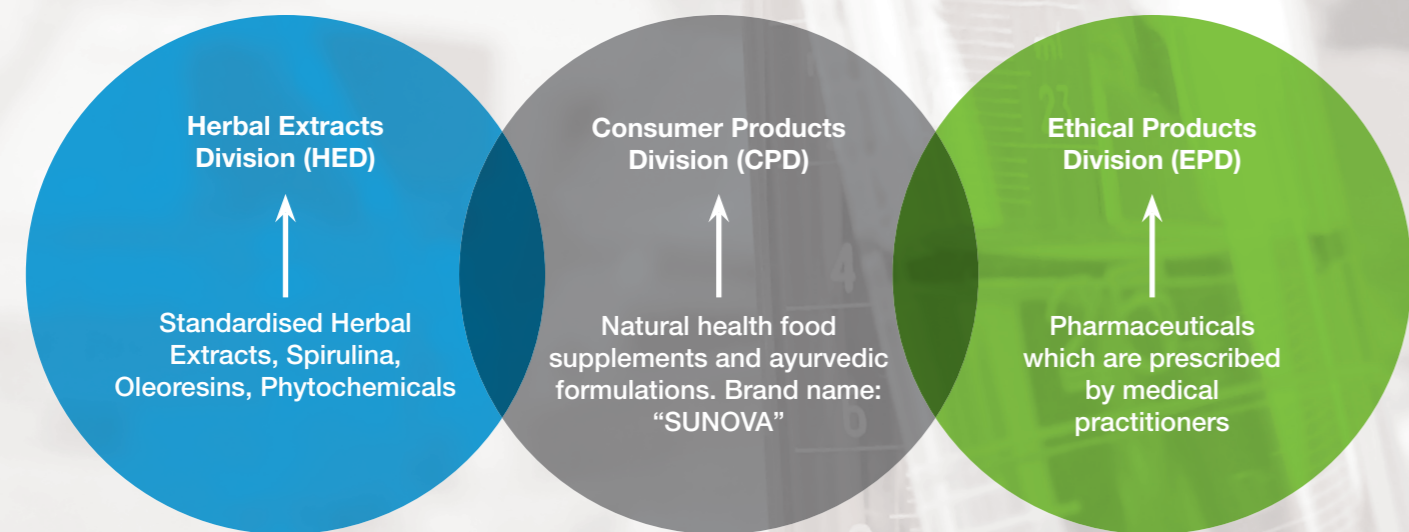
AKBA – A Key Anti-Inflammatory in Boswellia Extracts



Quality System

Sanat adheres to the best of manufacturing, laboratory and documentation practices to ensure high level of consistency in quality of results. Our state-of-the-art analytical facilities monitor and maintain strict quality control of our products and processes at every stage to meet pharmacopoeial/national/international quality standards.

Our three main divisions...



Herbal Extracts Division

Meeting the growing needs of the pharmaceutical, cosmetic, ayurvedic and food industries, our Herbal Extracts Division is engaged in extracting and marketing standardised herbal extracts of the highest quality for domestic and international customers. We also undertake customised extractions on confidential contract basis.

Today, our Herbal Extract Division sells more than 50 standardised herbal extracts apart from Spirulina, and has earned for itself, the image of the quality supplier in the international market.

Cosmeceutical Ingredients

With focus shifting on using natural remedies, especially for skin or hair related issues, we have come up with chemical-free cosmeceutical ingredients that give better and improved results. Cosmeceuticals is a delicate integration of pharmaceuticals with cosmetics. The concept behind combining these realms is simple – to develop and infuse biologically active extracts that proactively improve hair and skin.

The natural ingredients help improving the hair and skin conditions, thus replenishing the body with exotic plant extracts. This concept has revolutionised the science of cosmetics – promising healthy and lustrous hair along with flawless, glowing and wrinkle-free skin – without any side-effects or exposure to harsh chemicals.

Sanat has developed a wide range of natural cosmeceutical ingredients to address hair and skin concerns. Whether it's sensitivity, dry skin, pigmentation, fine lines or wrinkles, these ingredients powered by bio-actives, work naturally and are more effective than their chemical counterparts.



S. No.	Product (Botanical Name)	Bio-Markers and Limits	Testing Method	Major Application
58.	Terminalia extract (<i>Terminalia bellirica</i>)	Tannin 40%	Titration	Detoxifier
59.	Tinospora extract (<i>Tinospora cordifolia</i>)	Bitter 2.5% & 5%	Gravimetric	Immune support
60.	Vasaka extract (<i>Adhatoda vasica</i>)	Alkaloids 1%-5%	Gravimetric	Respiratory support
61.	Vasaka extract (<i>Adhatoda vasica</i>)	Vasicine 1%, total alkaloids 2%	HPLC/Gravimetric	Respiratory support and aids in cough & cold
62.	Lodhra extract (<i>Symplocos racemosa</i>)	Saponin 5%	Gravimetric	Treats eye disorders and diarrhoea
63.	White kidney beans extract (<i>Phaseolus vulgaris</i>)	Amylase Inhibitory activity 2000, 10,000-20,000 unit/gm	Gravimetric	Weight management
64.	Valeriana ext (<i>Valeriana wallichii</i>)	Valerenic acid 0.8%	HPLC	Calms nervous system, used in insomnia
65	Nano-Curcumin (<i>Curcuma longa</i>) particle size 20-100 nm	Curcuminoid NLT 40%	HPLC	Anti-oxidant, anti-inflammatory, anti-cancer

Phytochemicals

S. No.	Product (Botanical Name)	Bio-Markers and Limits	Testing Method	Major Application
1.	Kalmegh (<i>Andrographis paniculata</i>)	Andrographolide NLT 95%	HPLC	Liver support
2.	Curcumin RSF (<i>Curcuma longa</i>) Residue solvent NMT50 ppm	Curcuminoid NLT 95%	HPLC	Antioxidant, anti-inflammatory and anti-cancer
3.	Curcumin complex (<i>Curcuma longa</i>)	Lecithin complex 20%-70%	HPLC	Antioxidant, anti-inflammatory, anti-cancer
4.	Curcumin (<i>Curcuma longa</i>)	Curcuminoid NLT 95%	HPLC	Antioxidant, anti-inflammatory, anti-cancer
5.	Natural caffeine (<i>Coffea robusta</i>)	Caffeine NLT 95%	HPLC	Antioxidant
6.	Piperine (<i>Piper nigrum</i>)	Piperine NLT 95%	HPLC	Treats gastrointestinal disorders and intermittent fever
7.	Tetrahydrocurcumin (<i>Curcuma longa</i>)	Tetrahydrocurcuminoid NLT 95%	HPLC	Skin care cosmetic ingredient
8.	Steviosides (<i>Stevia rebaudiana</i>)	Stevioside NLT 90%	HPLC	Healthy natural sweetener
9.	AKBA (<i>Boswellia serrata</i>)	AKBA NLT 40%	HPLC	Anti-rheumatic, anti-inflammatory

Standardised Herbal Extracts

S. No.	Product (Botanical Name)	Bio-Markers and Limits	Testing Method	Major Application
1.	Amla extract (<i>Embllica officinalis</i>)	Hydrolyzable tannins 20%-45%	Gravimetric	Anti-aging, skin & hair care
2.	Aloe (<i>Aloe vera</i>)	200:1	Gravimetric	Cosmetic ingredient
3.	Garlic extract (<i>Allium sativum</i>)	Allin 1.3%	HPLC	Anti-lipemic, Anti-cholesteremic, Anti-rheumatic
4.	Onion extract (<i>Allium cepa</i>)	Quercetin	HPLC	Hypolipidemic
5.	Andrographis extract (<i>Andrographis paniculata</i>)	Andrographolides 10%, 20% & 95%	HPLC	Liver support
6.	Ashwagandha extract (<i>Withania somnifera</i>)	Total withanolides 1.5%-2.5% & 5%	Gravimetric	Immune support adaptogen
7.	Bacopa extract (<i>Bacopa monnieri</i>)	Bacosides 10%, 20% & 50%	HPLC/UV	Memory support
8.	Banaba extract (<i>Lagerstroemia speciosa</i>)	Corosolic acid 1% & 2%	HPLC	Blood sugar support and weight management
9.	Black pepper extract (<i>Piper nigrum</i>)	Piperine 95%	HPLC	Gastrointestinal disorders and intermittent fever
10.	Boswellia extract (<i>Boswellia serrata</i>)	Boswellic acids 60%-90%	Gravimetric/HPLC	Skin care, bone health care
11.	AKBA (<i>Boswellia serrata</i>)	AKBA 10%, 30% & 40%	HPLC	Anti-inflammatory
12.	Bamboo extract (<i>Bambusa arundinacea</i>)	Natural silica 75%	Gravimetric	Regulates menstrual period and helps digestion of proteins
13.	Calcium sennosides (<i>Cassia angustifolia</i>)	Sennosides 6%, 10% & 20%	HPLC	Laxative
14.	Cassia extract (<i>Cassia fistula</i>)	Saponin 10%	Gravimetric	Skin diseases and constipation
15.	Cissus extract (<i>Cissus quadrangularis</i>)	Total ketosterones 10%-40%	Gravimetric	Bone health care
16.	Coleus forskohlii extract (<i>Coleus forskohlii</i>)	Forskolin 1%, 10% & 20%	HPLC	Weight management
17.	Coffee bean extract (<i>Coffea robusta</i>)	Chlorogenic acid 45%, 50% & 60%	HPLC	Antioxidant and weight management
18.	Cinnamon extract (<i>Cinnamomum cassia</i>)	Polyphenols 10%-20%	UV	Anti-diabetic and antioxidant

S. No.	Product (Botanical Name)	Bio-Markers and Limits	Testing Method	Major Application
19.	Papaya leaf extract (<i>Carica papaya</i>)	Tannin 5%	UV	Anti-tumor, increases platelet levels in blood, dengue fever and helps in digestion
20.	Eclipta alba extract (<i>Eclipta alba</i>)	Bitters 3%	Gravimetric	Liver tonic
21.	Fenugreek extract (<i>Trigonella foenum-graecum</i>)	Saponins 50%	Gravimetric	Blood sugar support and cardiovascular support
22.	Guggul extract (<i>Commiphora mukul</i>)	Guggulsterones 2.5%	HPLC/UV	Anti-inflammatory
23.	Ginger extract (<i>Zingiber officinale</i>)	Gingerols 5% & 20%	HPLC	Digestive support and anti-inflammatory
24.	Ginkgo biloba extract (<i>Ginkgo biloba</i>)	Flavone glycosides –24% & Terpene lactones – 6%	HPLC	Memory and concentration enhancer
25.	Gotu kola extract (<i>Centella asiatica</i>)	Total triterpenes 10%, 20% & 40%	HPLC	Skin care and memory support
26.	Green tea extract (<i>Camellia sinensis</i>)	Polyphenols 25% & 90%	UV	Antioxidant and anti-cancer
27.	Gymnema extract (<i>Gymnema sylvestre</i>)	Gymnemic acid 25%, 50% & 75%	Gravimetric	Anti-diabetic, stimulates heart and circulatory system
28.	Grape seed extract (<i>Vitis vinifera</i>)	Proanthocyanidins 95%	UV	Antioxidant and general health
29.	Garcinia extract, hydroxycitric acid salts (<i>Garcinia cambogia</i>)	Hydroxycitric acid 50%-60%, Ca, Mg salt and water soluble salt	HPLC	Weight management
30.	Garcinia extract hydroxy citric acid salts (<i>Garcinia cambogia</i>)	Hydroxycitric acid 65% & 70% Mg salt (water soluble salt)	HPLC	Weight management
31.	Mangosteen extract (<i>Garcinia mangostana</i>)	Mangosteen 10% & 40%	HPLC	Dietary supplement for diarrhoea, dysentery, skin diseases, fever and urinary disorders
32.	Horse chestnut extract (<i>Aesculus hippocastanum</i>)	Aescin 20% & 40%	HPLC/UV	To treat hardening of the arteries, varicose veins, phlebitis, leg ulcers, haemorrhoids and frostbite
33.	Licorice extract (<i>Glycyrrhiza glabra</i>)	Glycyrrhizic acid 10%-25%	HPLC/Gravimetric	Digestive support
34.	Marigold extract (<i>Tagetes erecta</i>)	Lutein 10% & 20%	UV/HPLC	Natural food colourant
35.	Mucuna extract (<i>Mucuna pruriens</i>)	L-DOPA 10% & 50%	HPLC	Men's health support and in Parkinson's disease
36.	Momordica extract (<i>Momordica charantia</i>)	Bitter principles 2.5%-15%	Gravimetric	Blood sugar support
37.	Moringa leaf extract (<i>Moringa oleifera</i>)	Protein 15%	Kjeldahl	Immunity support

S. No.	Product (Botanical Name)	Bio-Markers and Limits	Testing Method	Major Application
38.	Moringa seed extract (<i>Moringa oleifera</i>)	Protein 60%	Kjeldahl	Immunity support
39.	Noni extract (<i>Morinda citrifolia</i>)	Alkaloids 0.07%	Gravimetric	In colic, seizures, cough, diabetes, urinary problems and menstrual problems
40.	Neem leaf extract (<i>Azadirachta indica</i>)	Bitter principles 2.5% & 10%	Gravimetric	Anti-bacterial
41.	Neem bark extract (<i>Azadirachta indica</i>)	Bitter principles 2.5% & 5.0%	Gravimetric	Anti-bacterial
42.	Phyllanthus amarus extract (<i>Phyllanthus amarus</i>)	Bitter principles 2.5% & 5.0%	Gravimetric	Hepatocare
43.	Pomegranate extract (<i>Punica granatum</i>)	Ellagic acid 5% & 40%	HPLC	Versatile antioxidant
44.	Kutki extract (<i>Picrorhiza kurroa</i>)	Kutkin 5% Bitter principles 8% & 10 %	HPLC/Gravimetric	Liver support
45.	Ginseng (<i>Panax ginseng</i>)	Ginsenoside 20%	HPLC	Improves thinking, memory enhancer, physical stamina and athletic endurance
46.	Shatavari extract (<i>Asparagus racemosus</i>)	Saponins 20%-50%	Gravimetric	Galactagogue
47.	Saw palmetto extract (<i>Serenoa repens</i>)	Fatty acids 45% & 90%	GC-MS	Prostate enlargement, increases testosterone level and reduces hair loss
48.	Shilajit extract (<i>Asphaltum mineral pitch</i>)	Total fulvic acid 2.5%	Gravimetric	Immunity support
49.	Safed musli (<i>Chlorophytum borivilianum</i>)	Saponins 20% & 40%	Gravimetric	Men's health support
50.	Silymarin extract (<i>Silybum marianum</i>)	Silymarin 70% & 80%	UV	Hepatoprotective
51.	Spirulina powder (<i>Spirulina platensis</i>)	Protein 60%	Kjeldahl	Diabetes, hypertension, hypolipidemic
52.	Tribulus extract (<i>Tribulus terrestris</i>)	Saponins 20%-80%	Gravimetric	Immunity support
53.	Triphala extract (<i>Emblica officinalis, Terminalia chebula and Terminalia bellirica</i>)	Tannins 20% & 40%	Titration	Digestive support, rejuvenator and laxative
54.	Tulsi extract (<i>Ocimum sanctum</i>)	Ursolic acid 1.5% & 2.5%	HPLC	Anti-pyretic, anti-cough, anti-cold and antioxidant
55.	Tulsi extract (<i>Ocimum sanctum</i>)	Tannins 10%	Titration	Anti-pyretic, anti-cough, anti-cold and antioxidant
56.	Turmeric extract (<i>Curcuma longa</i>)	Curcuminoids 95%	HPLC/UV	Antioxidant
57.	Arjuna extract (<i>Terminalia arjuna</i>)	Tannins 30%	Titration	Circulation support