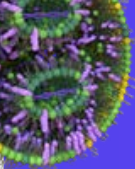




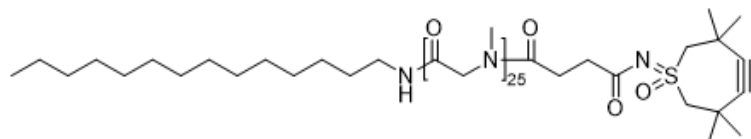
# ACTIVE TARGETING SHIELDING LIPIDS

Partnered with





### Tetradecylamine-PSar25-succ-CliCr®



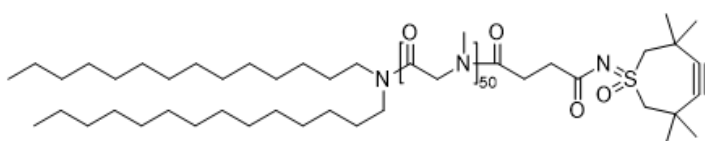
Product No

**CUR-L1529-25**

MW (kDa) 2.0 PURITY >95% CliCr®

50 mg | 100 mg | 1 g

### N-ditetradecylamine-PSar50-succ-CliCr®



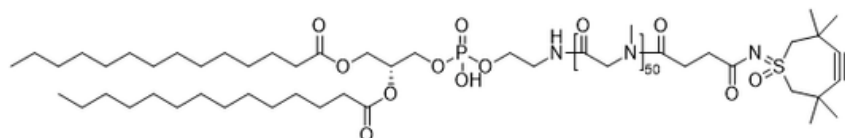
Product No

**CUR-L1530-50**

MW (kDa) 4.0 PURITY >95% CliCr®

50 mg | 100 mg | 1 g

### DMPE-PSar50-succ-CliCr®



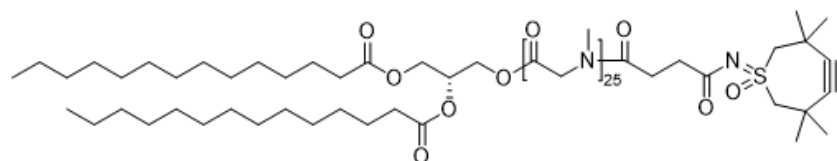
Product No

**CUR-L1531-50**

MW (kDa) 4.2 PURITY >95% CliCr®

50 mg | 100 mg | 1 g

### DMG-PSar25-succ-CliCr®



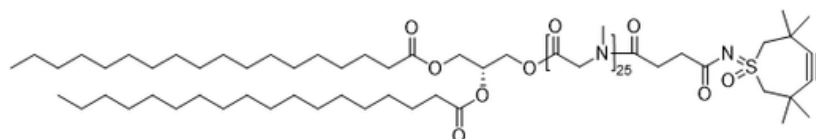
Product No

**CUR-L1532-25**

MW (kDa) 2.3 PURITY >95% CliCr®

50 mg | 100 mg | 1 g

### DSG-PSar25-succ-CliCr®



Product No

**CUR-L1533-25**

MW (kDa) 2.4 PURITY >95% CliCr®

50 mg | 100 mg | 1 g

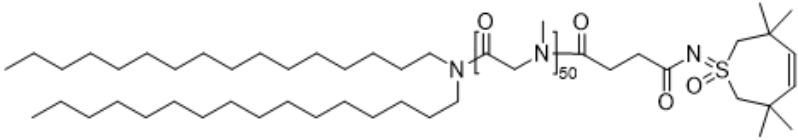
**N,N-dihexadecylamine-PSar50-succ-CliCr®**

Product No

**CUR-L1534-50**

MW (kDa) 4.0 | PURITY &gt;95% | CliCr®

50 mg | 100 mg | 1 g

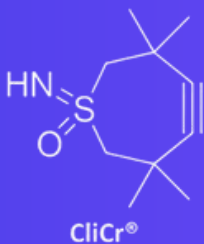
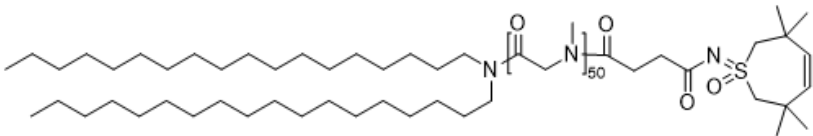
**N-dioctadecylamine-PSar50-succ-CliCr**

Product No

**CUR-L1524-50**

MW (kDa) 4.1 | PURITY &gt;95% | CliCr®

50 mg | 100 mg | 1 g



All these products are modified using CliCr® conjugation technology and can be attached to the targeting ligand of your choice.

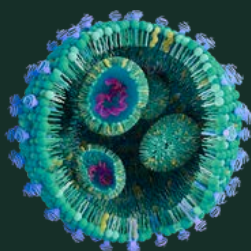
Curapath supports development from R&D to GMP-ready processes, enabling targeted LNP delivery (e.g., T cells, lung, brain) and extrahepatic biodistribution.

## Advantages of combining Curapath's PEG alternatives with CliCr® technology on your LNP formulations

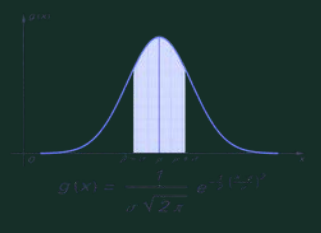
**Better Safety profile** (no PEG immunogenicity reactions)



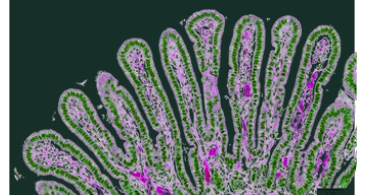
**Higher % LNP functionalization degree**



**Comparable profile** (size, PDI, EE%) **to not targeted LNPs**



**Increased tissue selectivity**





# CURAPATH

# ACTIVE TARGETING SHIELDING LIPIDS

Partnered with

