

Safe and Reliable COC/COP PFS Solutions



Preserving the full value of
your innovation.

From sample testing for product adoption
to customized mass production and quotation consulting,
discuss the ideal packaging solution for your business
directly with our experts.

AD Ject[®] Reliable COC/COP Prefillable Syringe

Advanced packaging platform for reliable drug delivery



493, Byeolmang-ro, Danwon-gu,
Ansan-si, Gyeonggi-do, Korea (15600)
E: adchem@adchemtech.co.kr
T: +82-31-491-5658
F: +82-31-491-5659

www.adchemtech.co.kr

Safe and Reliable COC/COP PFS Solutions

AD Ject goes beyond simple product supply,
providing verifiable technical documentation and a stable production infrastructure.
We also offer a project-responsive collaboration framework to support your needs.

AD CHEMTECH Co., Ltd.

Innovation begins with materials, Value is achieved through safety.

AD Ject is a high-quality PFS platform based on advanced COC/COP materials.

Engineered for the rigorous standards of the pharma and biotech sectors, AD Ject is a Ready-To-Fill Turnkey Solution designed for seamless integration into existing filling lines.

Our ISO-compliant design and packaging ensure a streamlined path from product evaluation to full-scale production with uncompromising quality.

- ▶ High-Quality COC/COP-based PFS Platform
- ▶ Ready-To-Fill (RTF) Process Compatibility
- ▶ ISO-Standard Design & Packaging Structure

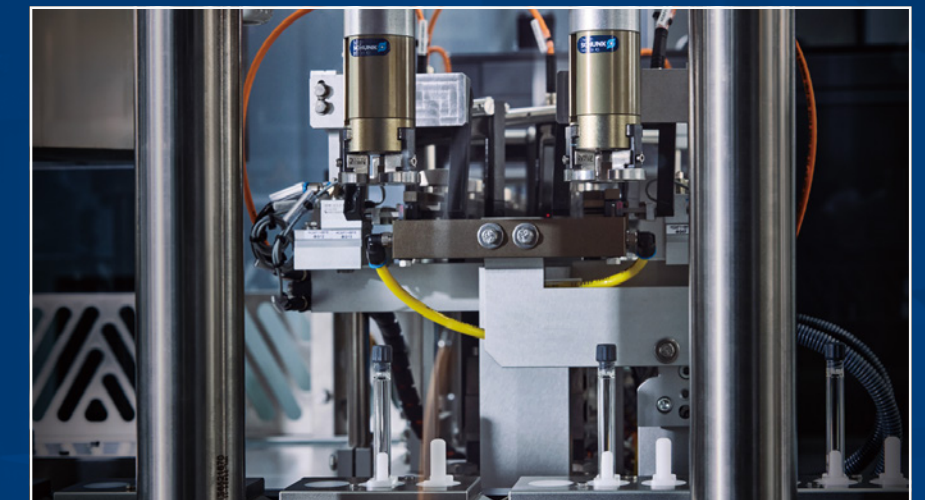
AD CHEMTECH Co., Ltd.

WHY COC/COP

Clarity Beyond Glass, Safety Beyond Limits

AD Ject utilizes medical grade COC (Cyclic Olefin Copolymer) and COP (Cyclic Olefin Polymer) materials to mitigate the risks of breakage and handling associated with traditional glass syringes and is engineered to enhance handling stability and operational efficiency.

By maintaining glass-like transparency within a lightweight yet robust structure, it supports a highly efficient operational environment from filling and transport to storage and pre-use inspection.



1 Glass-Level Transparency

Equivalent to glass, allowing for easy visual inspection of the drug.

2 Lightweight Handling

Lightweight design improves transport and process efficiency.

3 Zero Defects & Breakage

Significantly lower risk of breakage and particulate contamination.

4 Superior Drug Stability

Minimal interaction with drug formulations ensures long-term stability.

Safe and Reliable COC/COP PFS Solutions

Designed for Safety & Performance

AD Ject is engineered to meet pharmaceutical industry demands by integrating safety, usability, and production efficiency.

1 Global Standards

Designed to ISO 11040-6 and packaged in ISO 11040-7 Tub & Nest formats.

2 Ready-To-Fill (RTF)

Sterile supply reduces preprocessing burdens and lead times.

3 Precision Engineering

Integrated Luer-Lock and consistent gliding force via precision coating.

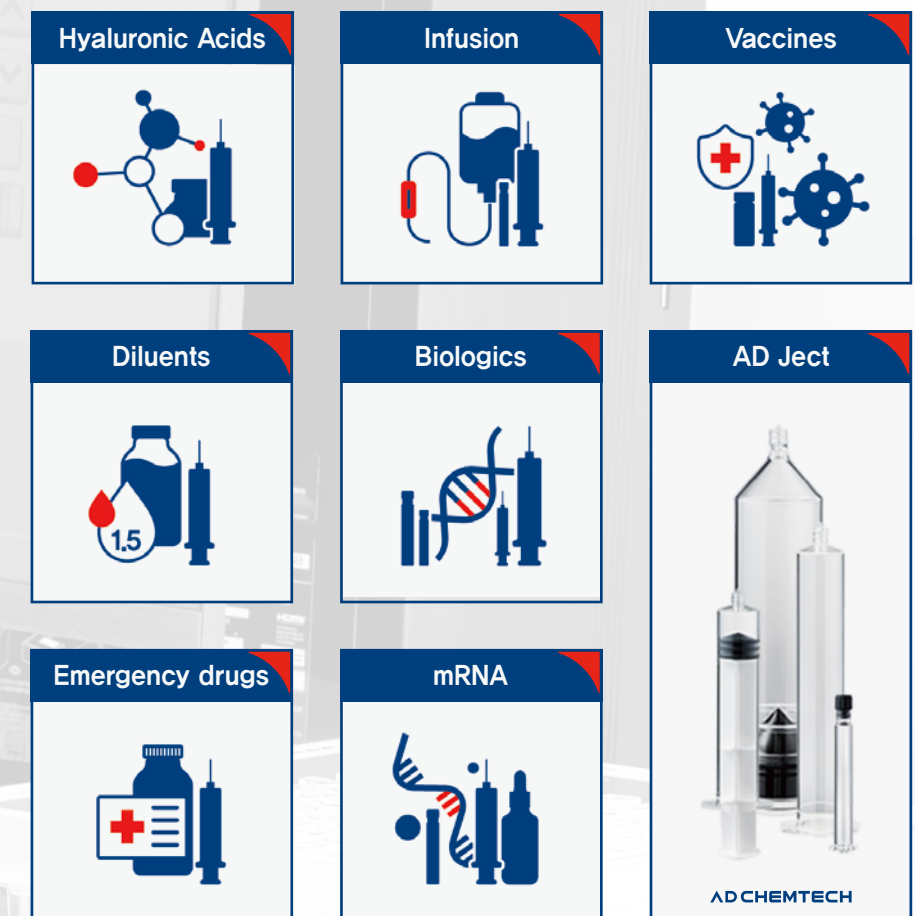
AD CHEMTECH Co., Ltd.



Versatile Application for Pharmaceuticals & Medical Devices

AD Ject is a versatile COC/COP PFS platform suitable for a wide range of pharmaceutical and medical device applications.

By ensuring compatibility with standard components and offering customized accessory solutions we provide the scalability needed to meet your specific product portfolio and project requirements.



Customization & Accessories

We provide tailored accessory solutions to reinforce your brand identity.

- ▶ Standard Backstop
- ▶ 1.0mL Long Plunger Rod
- ▶ 3.0mL Plunger Rod

Technical Specifications

Product line-up



AD Ject 1.0mL Long Luer-Lock



AD Ject 3.0mL Luer-Lock



Tub 1mL and 3mL

- ▶ Barrel: COC/COP
- ▶ Integrated Luer-Lock Design
- ▶ Compliant with ISO 80369-7 / ISO 11040-7
- ▶ Silicone Coating: Ensures consistent gliding force
- ▶ Packaging: Tub & Nest, Tyvek Sleeve & Lid, PE Header Bag, Pallet
- ▶ Sterilization Method: Gamma / EO Gas
- ▶ Ready for Filling

| AD CHEMTECH | | Total Length (mm) | Barrel (mm) | TIP Cap Ø (mm) | Inside Barrel (mm) | Inside Ø (mm) | OutSide Ø (mm) | Flange Ø (mm) | Flange Ø (mm) | Flange Thickness (mm) | Pieces per tub |
|-------------|--------------------|-------------------|-------------|----------------|--------------------|---------------|----------------|---------------|---------------|-----------------------|----------------|
| AD Ject | 1mL lg (Luer Lock) | 71.00 | 62.50 | 10.50 | 53.80 | 6.50 | 9.35 | 13.6 | 11.00 | 2.30 | 100 |
| | 3mL (Luer Lock) | 88.50 | 82.20 | 10.50 | 71.50 | 8.55 | 11.55 | 17.55 | 14.70 | 2.35 | 100 |
| Tub | 1mL and 3mL | 227.00 | 260.00 | - | 97.00 | - | - | - | - | - | - |

AD CHEMTECH Co., Ltd.

Manufacturing Confidence, Operational Efficiency

AD Ject is a comprehensive PFS platform integrating advanced design with a robust manufacturing and quality system.

We ensure product consistency and reliability through our fully integrated cleanrooms, ISO 13485-certified quality systems, and GMP Class C compliance.

Beyond performance, AD Ject prioritizes operational efficiency across the supply chain, packaging, and resource conservation.

Quality / Manufacturing

- 1 ISO 13485 Certified (Medical Devices)
- 2 ISO 14644-1 Class 7 Integrated Cleanroom
- 3 GMP Class C Compliant
- 4 Precision & Automated Manufacturing

Sustainability in Practical Terms

Our Korea-based manufacturing simplifies the supply chain, ensuring faster and more efficient response times

Efficient Packaging

Our Tub & Nest-based packaging system provides an efficient structure designed to ensure superior product protection while enabling seamless compatibility throughout the entire process.

Resource Conservation

We are committed to sustainable operations by minimizing unnecessary resource waste through high-precision, efficient manufacturing processes.