

Adaptive Pallet Solutions: Pharma & Life Sciences Overview

Intelligence at the foundation of your supply chain

Brands That Trust Our Pallets

+25 Years Making Best-In-Class Plastic Pallets.
Ranked the #1 Thermoformed Plastic Pallet Producer in the US.



+ Many More

Why Are We Here

Your supply chain is full of data. Almost none of it tells you what's actually happening to your product between release and receipt.

Why We Exist

No one has built a real-time intelligence layer that travels with your product.

We did.

Delivered through a smarter, more durable, more sustainable pallet.

What You Get

The ability to see, prove, and act on what's happening to every load in your network before it becomes a deviation.

Problems We Solve

Every day, supply chains absorb costs that better data would eliminate.

Problem	Today	With Pulse
Temperature Excursion	A breach happens in transit. You find out at the dock. Investigation begins with no data.	Continuous monitoring with breach alerts in transit and timestamped evidence for deviation reports.
Chain of Custody	You file a claim or face an audit. No proof of who had it, where it stopped, or for how long.	Timestamped handoff documentation. Audit-ready chain of custody at every node.
Theft & Diversion	Product disappears between facilities. Stolen, diverted, or misrouted and no data to determine which.	Live GPS, tamper alerts, and geofence deviation flags. DSCSA-aligned traceability.
Damage	A shipment arrives compromised. No data to prove when, where, or how. You absorb the loss.	Exact location and moment of impact. Claim-ready evidence.
DC Dwell & Throughput	One facility turns product in two days. Another takes six. No data to compare or explain why.	Dwell time by facility, by lane. Side-by-side benchmarking.
Audit Readiness	Producing chain of custody documentation for an FDA or quality audit takes days of manual work.	Complete, timestamped audit trail generated automatically for every pallet in your network.

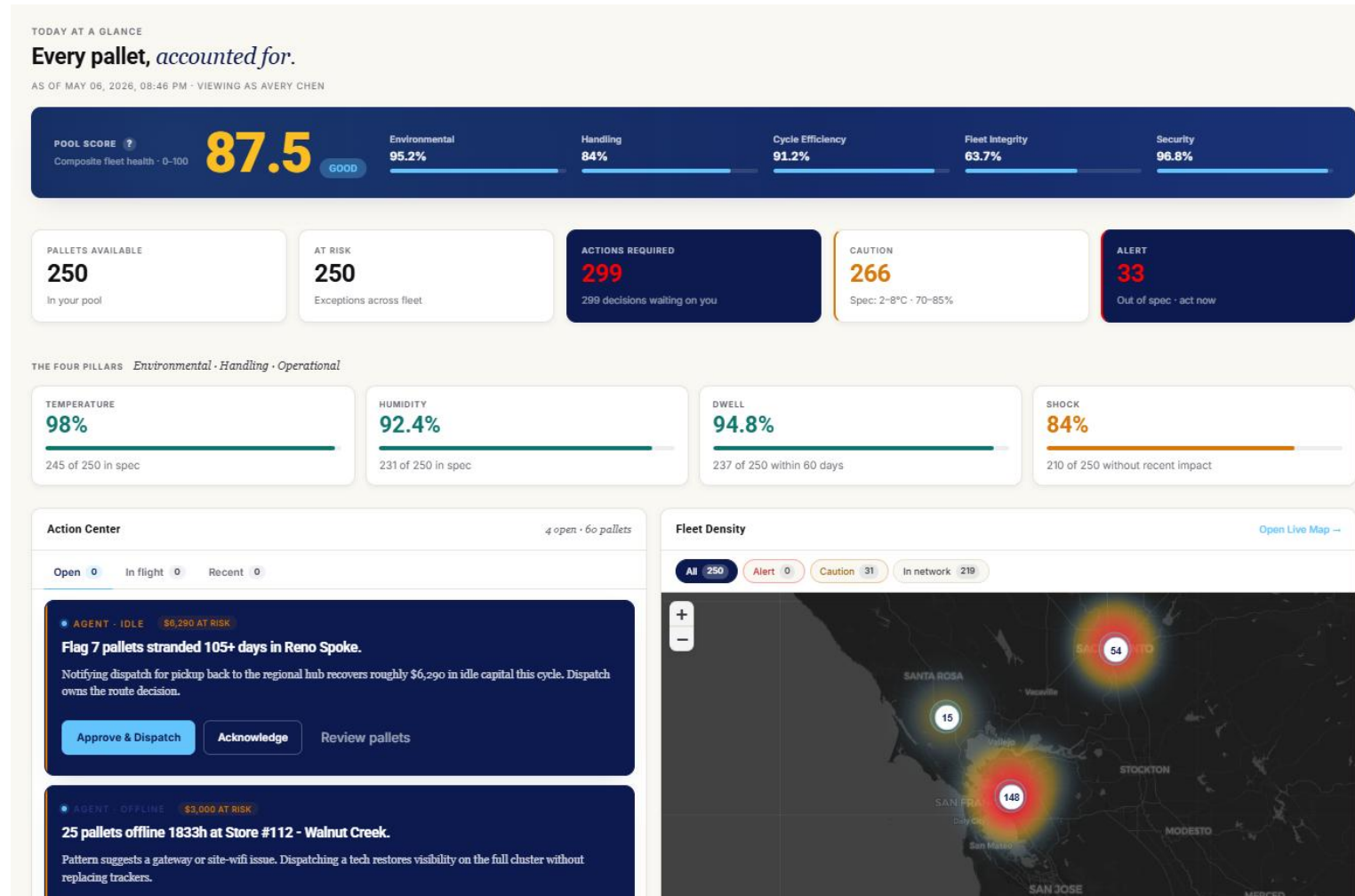
How It Works

You don't monitor 100,000 pallets. You see only what needs your attention.

Shrink, loss, and unauthorized movement

Dwell time, delays, and bottlenecks

Temperature, humidity, and impact breaches



The Pulse Platform

One platform. Continuous intelligence.

Everything you need to see, prove, and act on
...in one place

Visibility

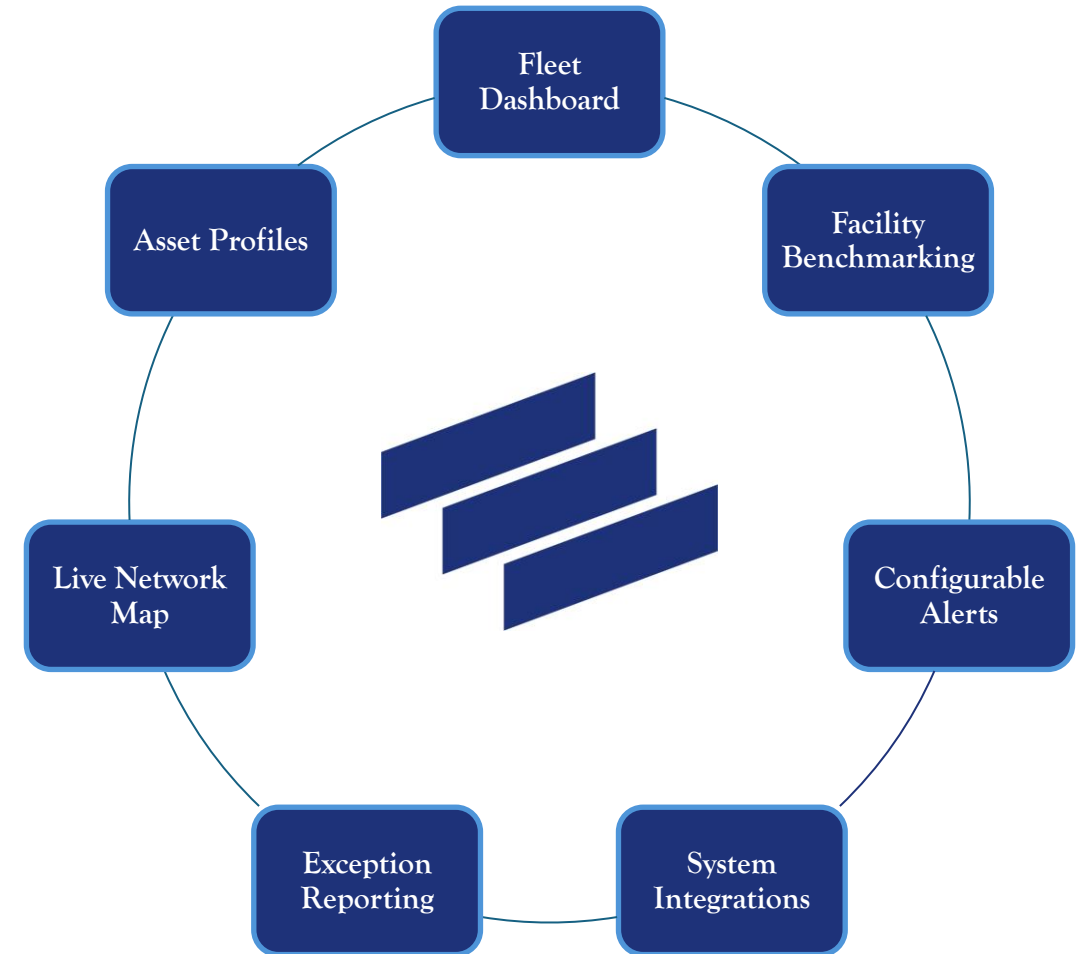
Real-time location, condition, and status across every node

Compliance

Chain of custody, audit trails, and deviation-ready documentation

Action

Exceptions surfaced and routed before they become costs



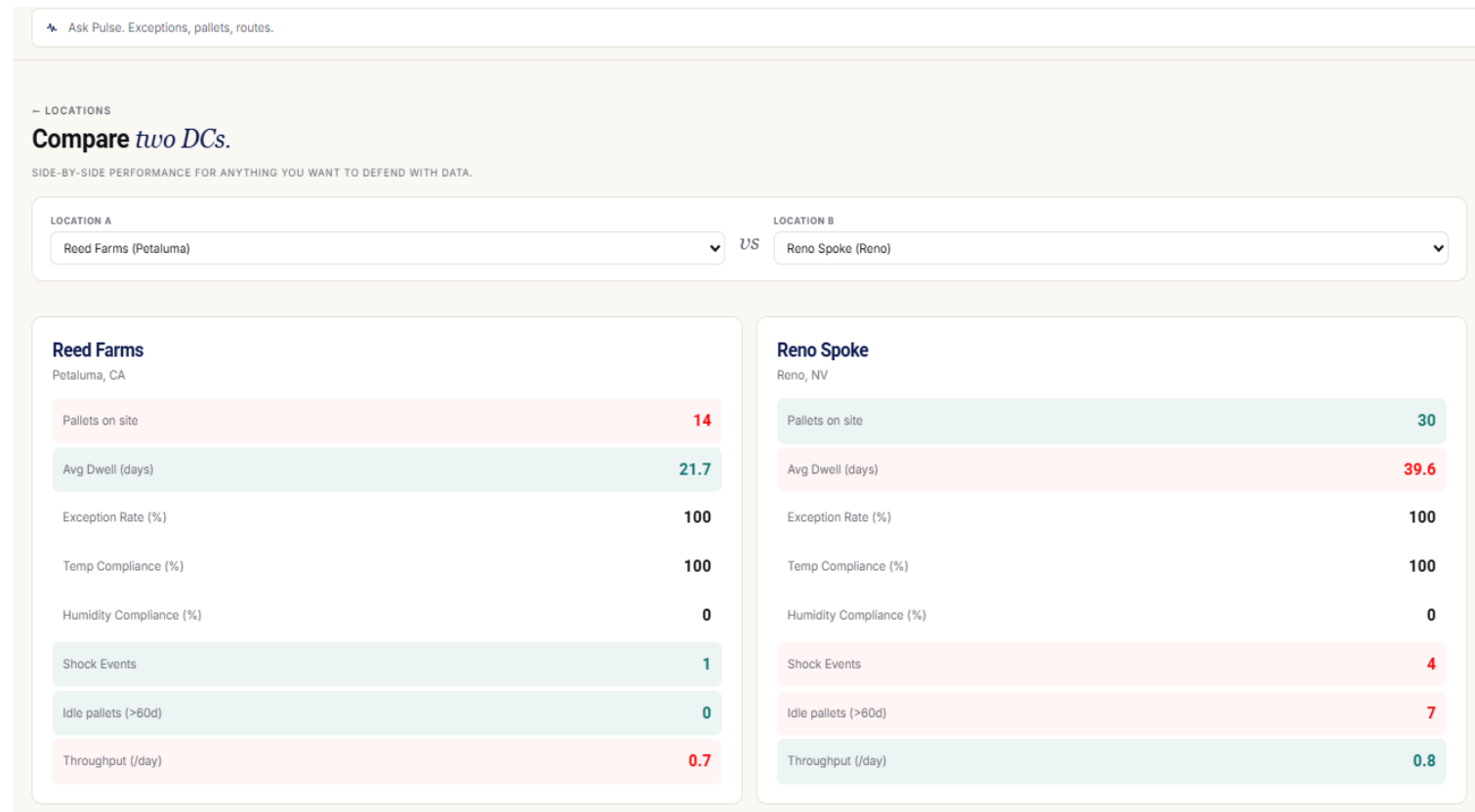
Built for Your Operation

Your thresholds. Your KPIs. Your alert rules.

Every metric is **configurable to your operation** and comparable across your entire network

Compare any two facilities **side by side**: dwell time, throughput, exception rates, compliance

When something drifts out of spec, **the right person is alerted** on the right channel before it triggers a deviation.



Fits Your Stack

No new infrastructure. No rip-and-replace.

Connects to your WMS, ERP, and communication systems

Alerts delivered via push, SMS, voice, or floor displays

Don't see your system? We build the integration



Let's Discuss

- What supply chain decisions are you making today without real-time data?
- Where are you absorbing cost today because you can't prove what actually happened in transit?
- If every shipment could report its own location and condition continuously from release to receipt what's the first compliance gap you'd close?

Contact

If you're curious about what your pallets could be telling you, we'd love to show you

Rodrigo Castro – *President*

Email: rodrigo@adaptivepallet.com

Cell: 215-601-9379

Terry Crew – *Director of Customer Engagement*

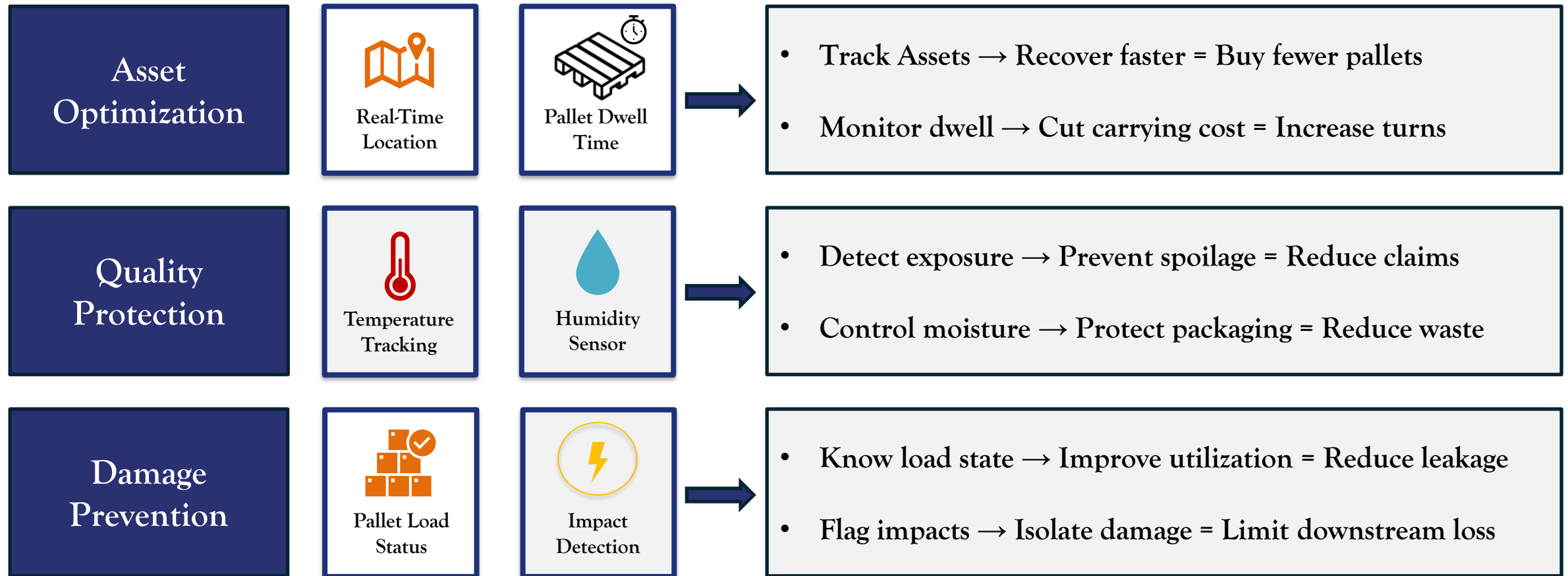
Email: terry@adaptivepallet.com

Cell: 407-492-6102

Appendix

Intelligence That Drives Results

Actionable visibility without infrastructure



Individual Asset Intelligence

Every Pallet Has a Profile

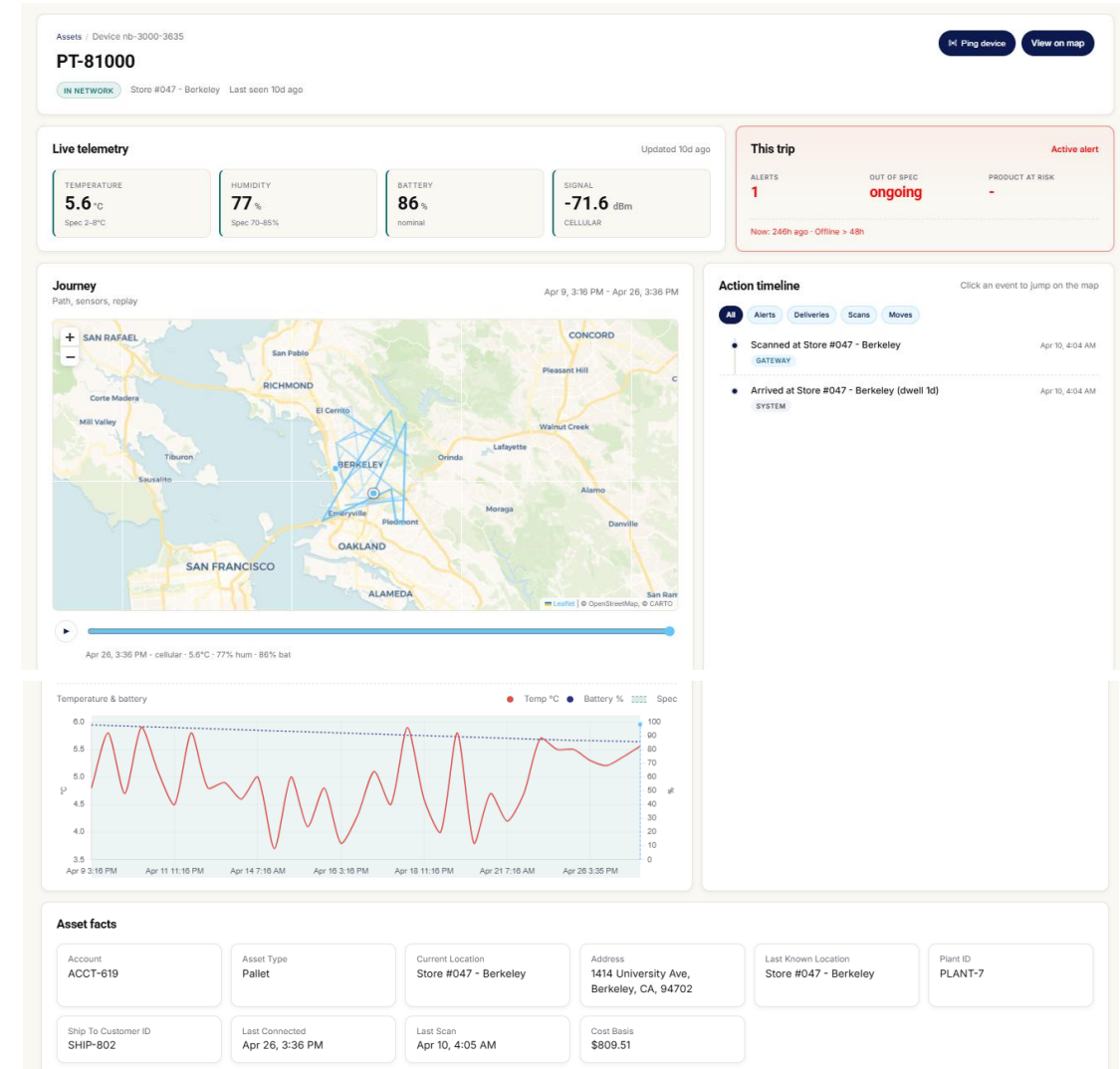
Live location, temperature, humidity, battery, signal strength, and full journey history on one screen for all your pallets

Real-Time Condition Monitoring

Continuous reporting without scanning or facility infrastructure. Active alerts flag out-of-spec conditions as they happen

Full Audit Trail

Every scan, move, delivery, and alert timestamped and logged automatically



The Savings Opportunity



Track every asset in real-time

Reduce pallet loss and speed recovery across your network



Detect risks before they escalate

Monitor temperature, humidity, shock to prevent spoilage and claims



Optimize utilization and reduce waste

Know which pallets are loaded, empty, or stuck – and act accordingly



Protect your workforce

Safer design addresses the 30,500 pallet-related ER visits¹

Why Smart Plastic Pallets

The intelligence layer is the product. The pallet is how we deliver it.

 **Durable & Consistent**
10x lifespan vs. wood, optimized for automation, built for your operations

 **Simple Economics Through Leasing**
Predictable costs, always-in-spec assets, no ownership burden

 **Tech-enabled Intelligence**
Real-time tracking, condition monitoring, exception alerts without new infrastructure

 **Cleaner & Safer**
Eliminates contamination risk and reduces workplace injuries