

Since 1999
BeadTech Inc.



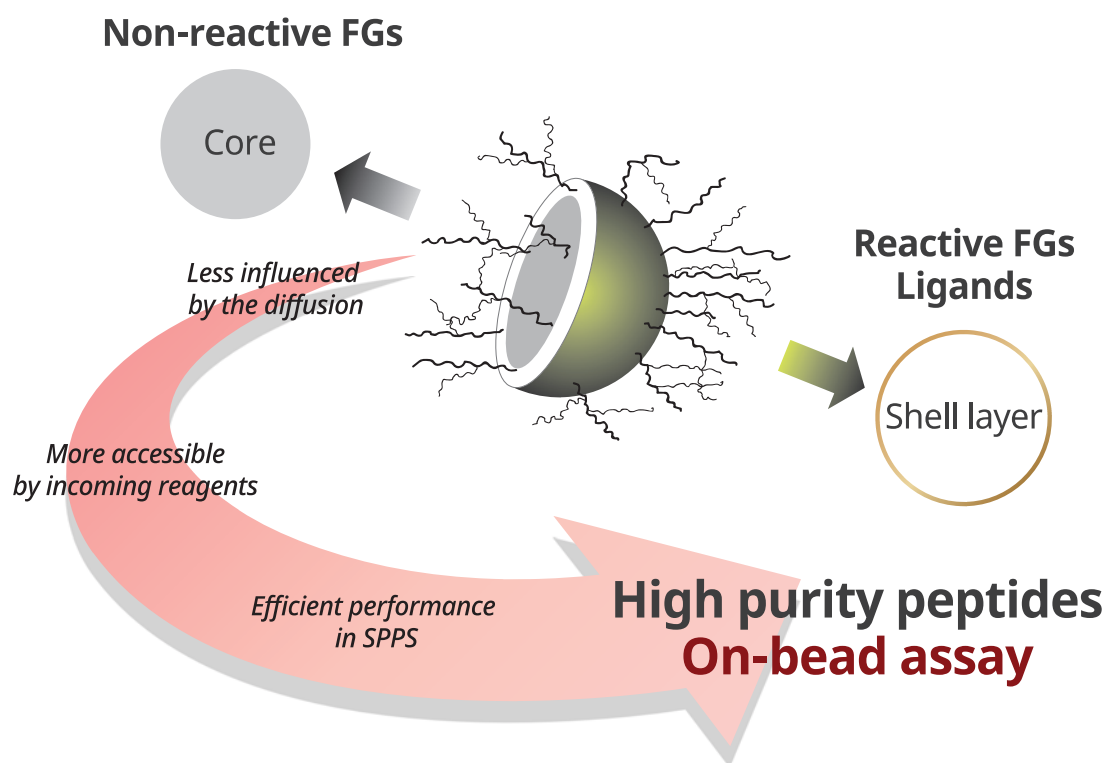
BeadTech

Your Solid Partner



BeadTech Inc. is
specialized in commercial scale production of bead-type resins
required for synthesis of small organic molecules and biomolecules such as peptides!

Ideal Resins for Peptide Synthesis



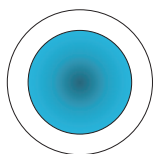
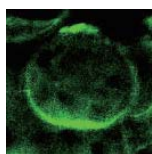
Core-Shell Type Resins

- 2-Chlorotrityl Chloride resin
- Aminomethyl(AM) PS resin
- Rink amide AM resin
- Rink amide MBHA resin

[for peptides of high purity]

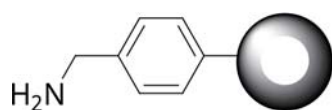
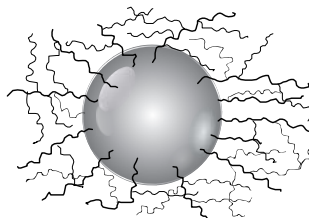
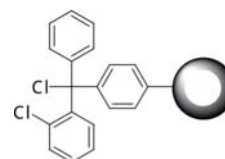
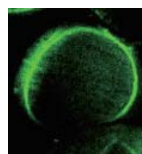
Soft-Shell

J. Pept. Sci., 13 (10),
655-661 (2007)



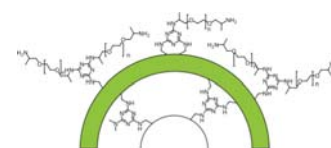
2-CTC Resin

Tetrahedron Lett, 48, 389 (2007)



AM SURE CS Rink AM, MBHA

J. of Comb. Chem., 7, 170-173 (2005)
Tetrahedron Letters, 46, 7135-7138 (2005)

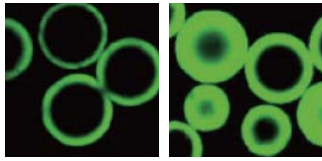


HiCore

Org. Lett., 6, 3273-3276 (2004)

BTCore™ Resin Products

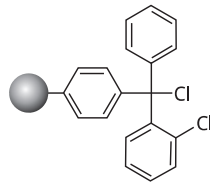
| HiCore™ resin



[Core-Shell Type HiCore™ Resin]

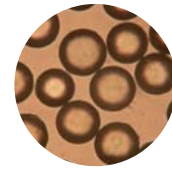
- Standard mesh size is 100-200 mesh
- 1% DVB cross-linked
- Loss of dry : < 2.0 %

| BTCore™ CTC



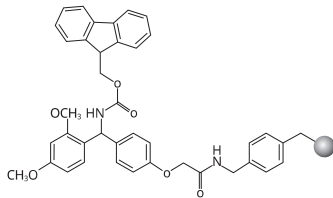
- 100-200 mesh
- 1% DVB cross-linked
- Loading:0.6-1.4mmol/g
- LOD:<5.0%

| BTCore™ PS(Polystyrene)



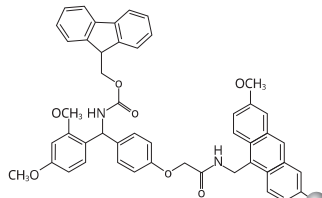
- 100-200 mesh
- 1% DVB cross-linked
- LOD:<2.0%

| BTCore™ RAM resin



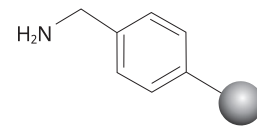
- 100-200 mesh
- 1% DVB cross-linked
- Loading:0.2~0.9 mmol/g
- LOD:<1.0%

| BTCore™ RMBHA



- 100-200 mesh
- 1% DVB cross-linked
- Loading:0.2~0.9 mmol/g
- LOD:<1.0%

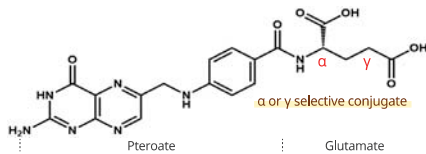
| BTCore™ AM PS



- 100-200 mesh
- 1% DVB cross-linked
- Loading:0.8~1.2 mmol/g
- LOD:<2.0%

Peptides & Peptoids

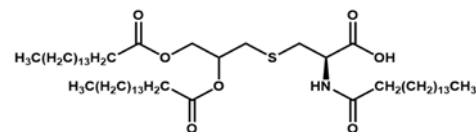
| Folate-conjugated peptide



Application

- Cancer diagnosis and imaging
- Imaging of inflammatory diseases
- Treatment of inflammatory diseases

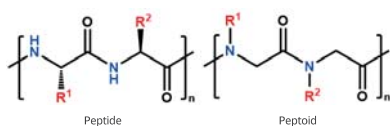
| Pam3Cys-conjugated peptide



Application

- Immunology research
- Vaccine adjuvant
- Antimicrobial activity

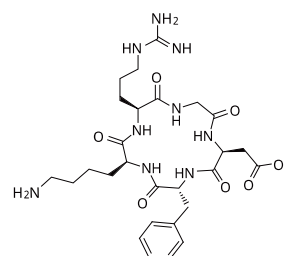
| Peptoids



Application

- Increased chemical stability
- Tunable physicochemical properties
- Reduced immunogenicity

| Cyclic RGD-conjugated peptide



Application

- Cancer diagnosis and imaging
- Cancer therapy
- Targeted drug delivery
- Tissue engineering

Since 1999
BeadTech Inc.



Your Solid Partner BeadTech, Inc.

BeadTech Inc. is a reliable partner you can count on. Founded in 1999 as a venture capital startup from Seoul National University, we specialize in producing bead type PS resins at a commercial scale. These resins are essential for synthesizing peptides, nucleotides, and small organic molecules

We offer a wide range of high-quality products, including PS resin, 2-CTC resin, Rink amide AM resin, Rink amide MBHA resin, Core-shell type and Hi-Core resin.

As the only manufacturer of polymer supports in Korea, we are committed to establishing a strong partnership with our customers in the development and production of peptides. You can trust us to provide reliable and consistent support for all your needs.

Contact US

Tel +82-31-8084-8414
+82-31-8084-8359

Fax +82-31-494-8440

E-mail vivo1004@beadtech.co.kr
cysrrr@beadtech.co.kr

Website www.beadtech.co.kr
www.dermapep.co.kr

