

# BEST PRACTICE

## SACHET PACKAGING | SEALED EDGE POUCH



### From manual packaging to full automatization

Proderma AG is a leading Swiss contract manufacturer for the production of individually packaged wet wipes. Until recently, they were packed by hand into folding boxes, which led to production bottlenecks and high labor costs. With the desire to automate this process step, Proderma went in search of a fully automated packaging solution.

**And found what they were looking for at Christ Packing Systems!**

”

### WE ARE IMPRESSED

by the solid construction, the accessibility and the flexibility to run 3 different formats on one machine. We appreciate the willingness and flexibility of Christ Packing Systems to always respond to our wishes and to search for joint solutions.

Daniel Bächli, Proderma



### ? CHALLENGES | FOR PRODERMA

- Production bottlenecks and high labor costs due to manual packaging
- Desire for greater process reliability through automatization
- Need for greater flexibility towards own customers
- Limited space availability

### ! SOLUTION | BY CHRIST

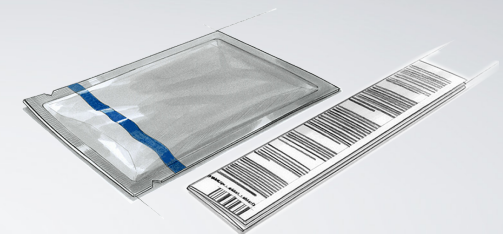
- Compact, modular BoxTeq 600 cartoner with 90-degree infeed
- Output of 420 sachets/minute
- Customized feeding area with smart Pick & Place solution
- Particularly fast and easy format changeover in only 20 minutes

### ✓ ADVANTAGES | FOR PRODERMA

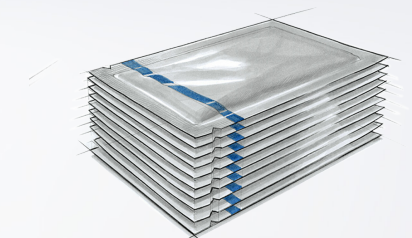
- Higher productivity, due to higher output and less downtime
- More flexibility, as 3 formats are packed on one machine
- Greater process reliability, less dependence on staff availability
- Increased packaging efficiency for smaller and medium batches

# BEST PRACTICE

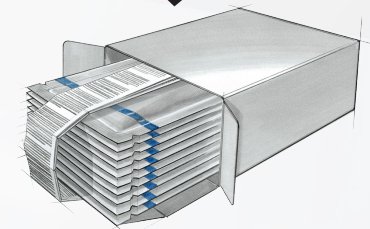
SACHET PACKAGING | SEALED EDGE POUCH



Single sachet



Stacked sachets



With leaflet in folding box

## ✓ HOT FACTS | BoxTeq 600 CARTONER

- **Flexible:** fast, easy, and largely tool-free format changeovers
- **Accessible:** swivelling control cabinet and ergonomic service position of the carton magazine
- **Gentle:** optimal interaction of all movements via servo motors
- **User-friendly:** long autonomous machine run due to large carton magazine (up to 750 carton blanks)
- **Sustainable:** low-maintenance components and long machine life

## ✓ TECHNOLOGY | AT A GLANCE

- Performance: max. 120 folding boxes/minute
- Folding box dimensions (axbxh):  
min. 25 x 15 x 65 mm | max. 120 x 100 x 200 mm
- Packaging material: Folding box with hot melt or tuck-in flap
- Integration of complex labelling & control processes and Track & Trace, including components such as labellers, printers, checkweighers, code readers