

C I Series

AUTOMATIC INSPECTION MACHINE

FOR CAPSULES



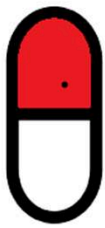
- ✓ FULLY AUTOMATIC
- ✓ NO DEAD ZONE
- ✓ ROBUST AND PRECISE
- ✓ CGMP COMPLIANT

APPLICATION

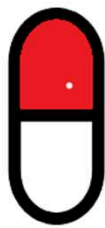
- Opaque
- Transparent
- Bio-color
- Semi-Transparent
- Empty

• Size 000, 00, 0, 1, 2, 3, 4, 5

• **CI-150** **150,000** pcs/hr
 • **CI-300** **300,000** pcs/hr



Black Spot



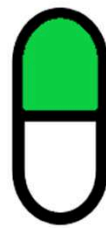
Hole



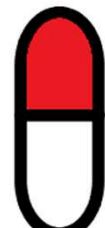
Joint



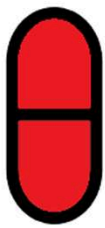
Leak



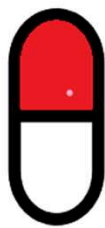
Foreign



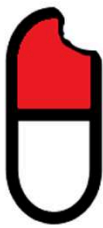
Unlocked



Double Caps



Bubbles



Broken



Dent



Empty



Single Cap/Body



Incomplete



Smudge



Ink Line



Double



Versa



Ink Spot



Intensity



Unprinted

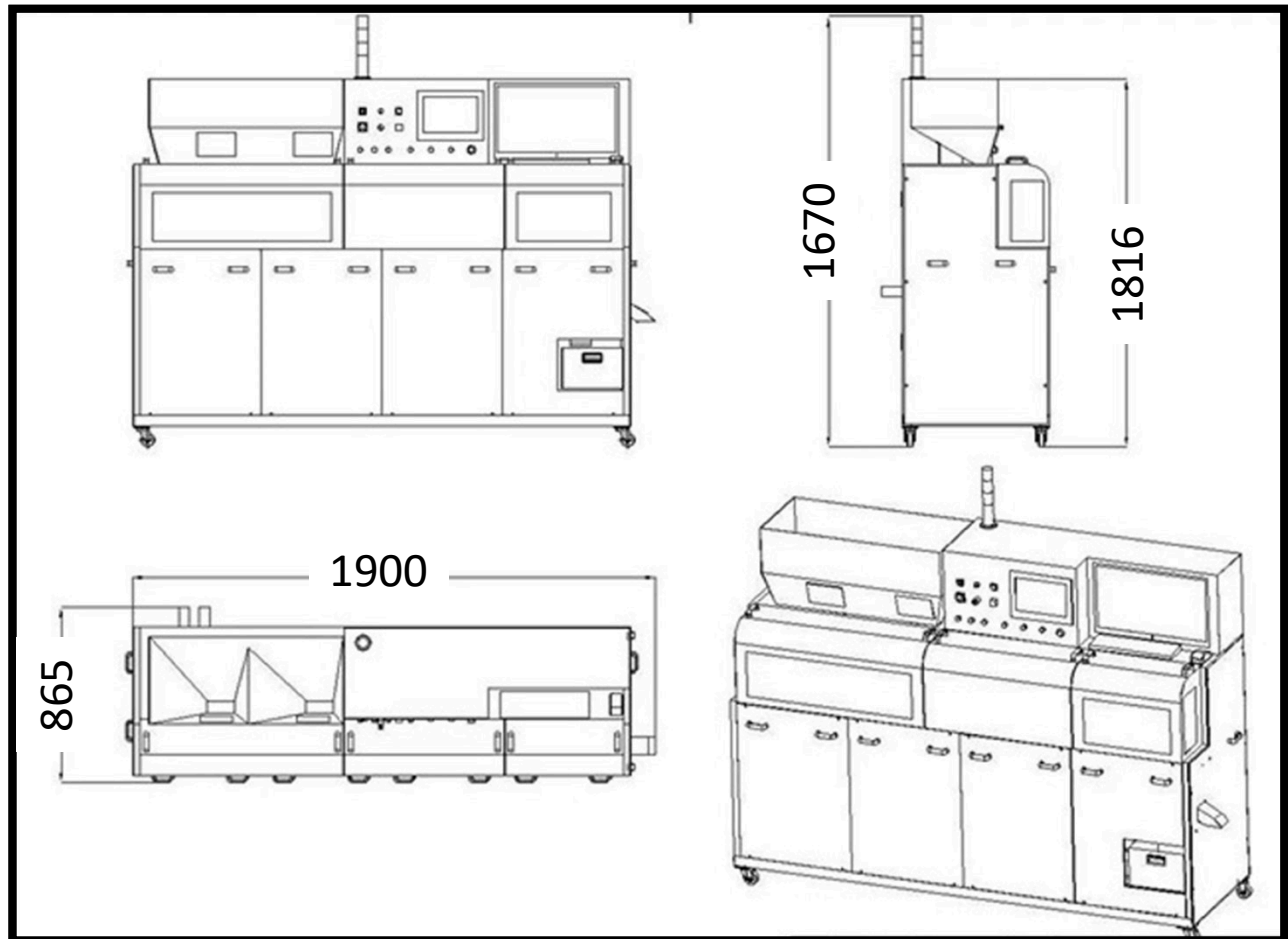


Up-side-down



Wrong

CONFIGURATION



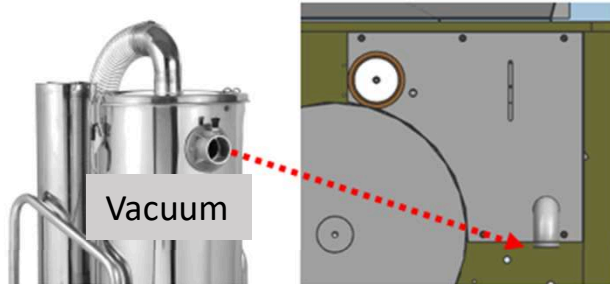
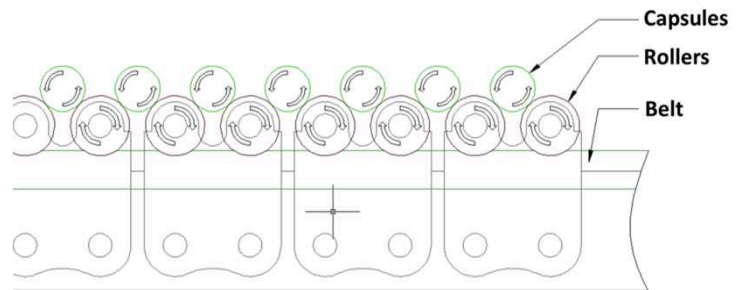
CI150

CI300

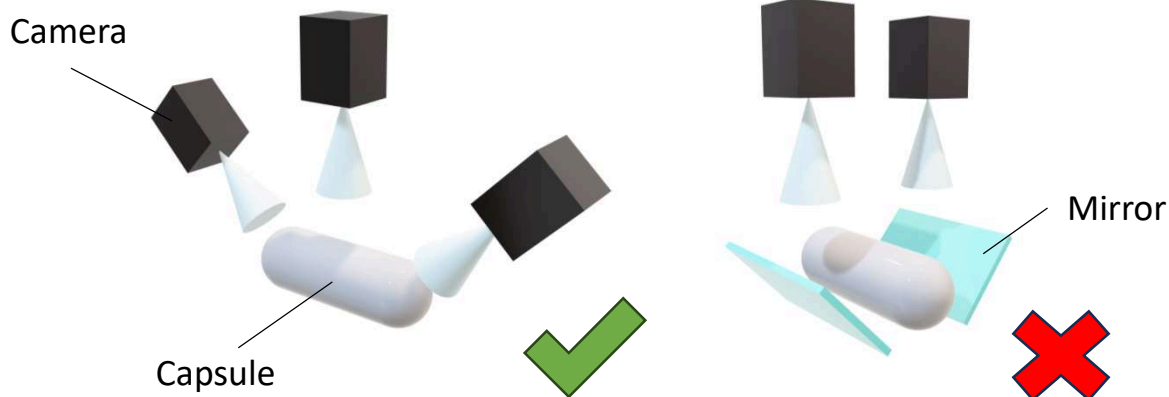
Dimension	L1900*W765*H1670mm	L1900*W865*H1670mm
Weight	650KG	700KG
Compressed Air	≥0.6mpa	≥0.6mpa
Power	1 phi 220V 3kw	1 phi 220V 4kw
Inspect Ability	≥40μm	≥40μm
Capacity (Max)	150,000 pcs/hr	300,000 pcs/hr

FEATURE

- The machine roller is servo driven to ensure 100% 360 degree capsule inspection.
- At any running speed, all capsules can rotate 360 degrees.



- Compatible with vacuum machine for dedusting



- Unlike some of the machines on the market that acquire images by refracting through mirrors, we take images directly from the camera and are not disturbed by mirror contamination.

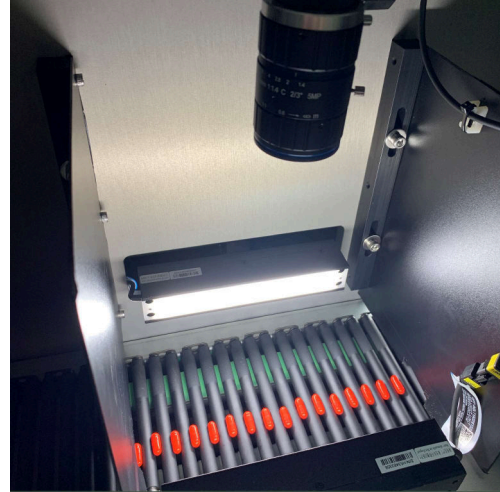
PROCESS

1



CAPSULE ALIGNING

2



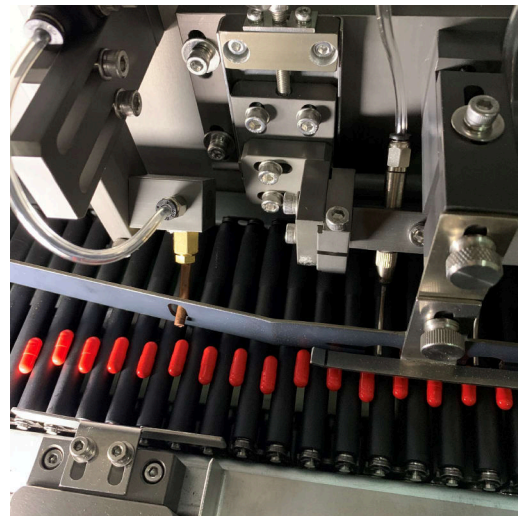
MAIN INSPECTION

3



DOME INSPECTION

4

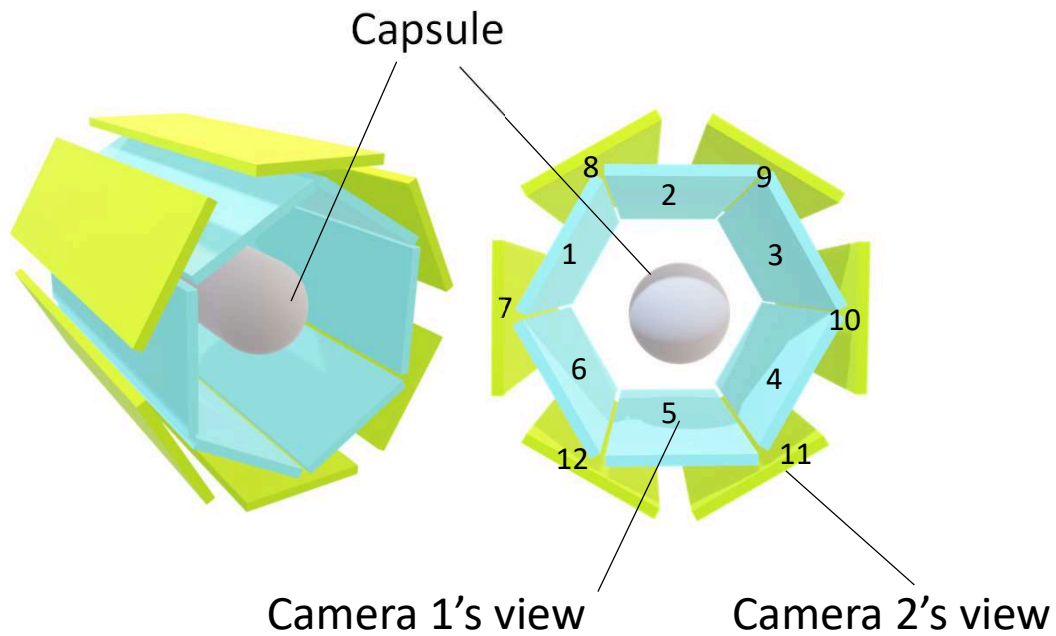


DISQUALIFIED **DOUBLE-CHECK** REJECTION
(Compressed Air)

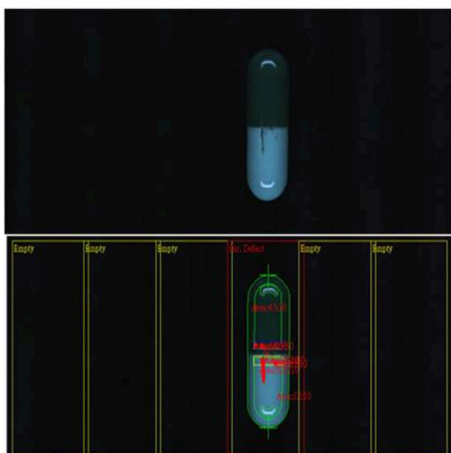
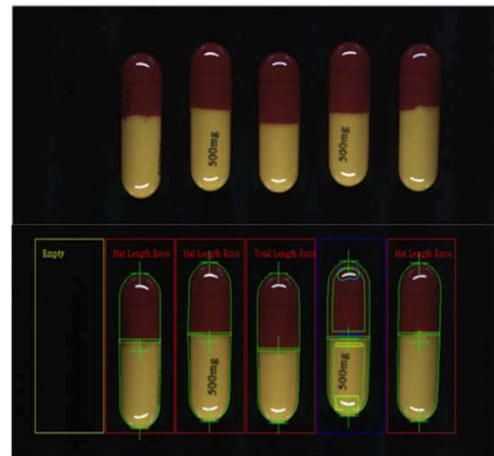
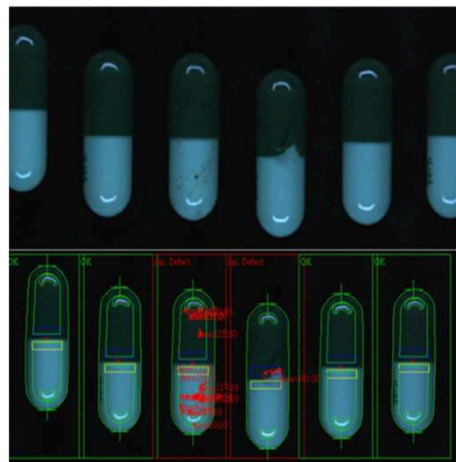
For inspecting new sizes, all you need is to change the Feeding Wheel! (5 mins)

For Cleaning, entire job change-over in 10 mins. No electrical cords, sensor wires etc.

INSPECTION



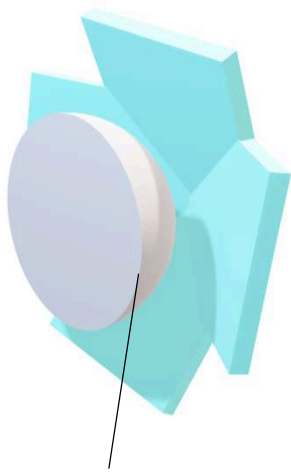
Altogether **12 angles** will be inspected!



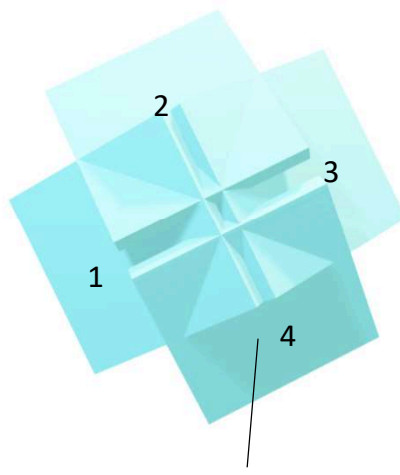
Leak

Printing

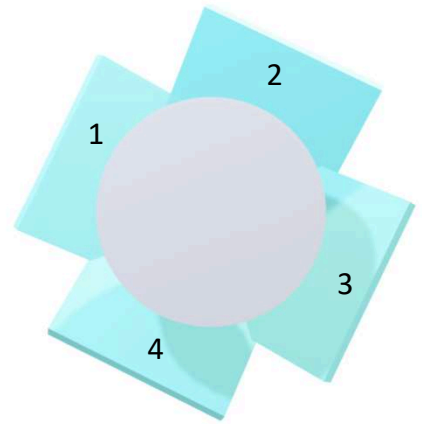
INSPECTION



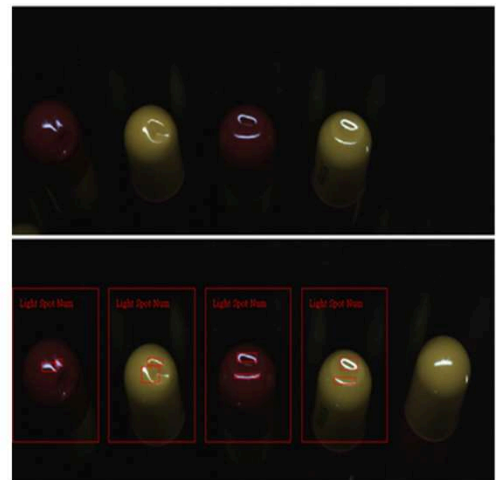
Capsule's dome



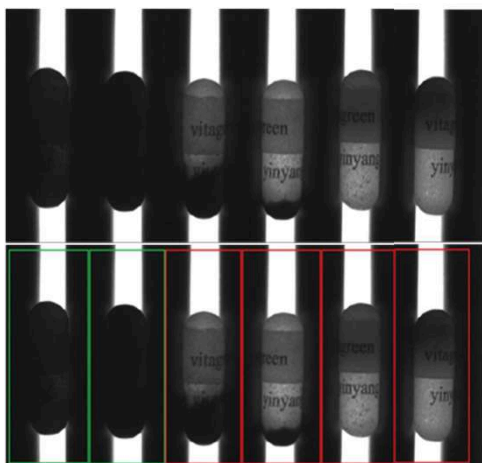
Camera's view



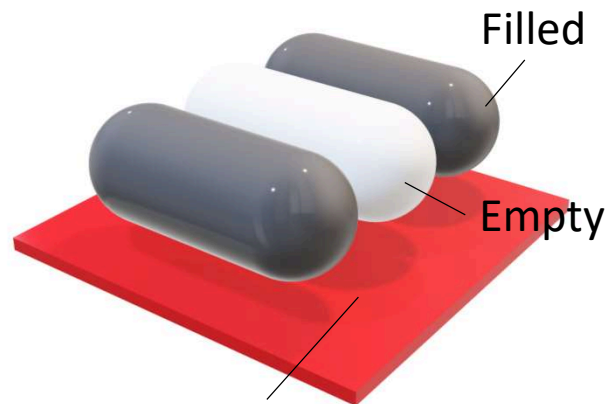
Altogether 4 angles
will be inspected!



Dent



Filled Status



IR Light