

# **TAI Series**

## **AUTOMATIC**

## **PRINTING**

## **MACHINE**

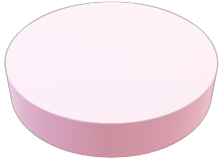
## **w/ AI SUPERVISING**



- ✓ **FULLY AUTOMATIC**
- ✓ **NO DEAD ZONE**
- ✓ **ROBUST AND PRECISE**
- ✓ **cGMP COMPLIANT**

# APPLICATION

$\Phi < 20\text{mm}$



Round Tablet

$L < 22\text{mm}$



$W < 13\text{mm}$

Oblong Tablet



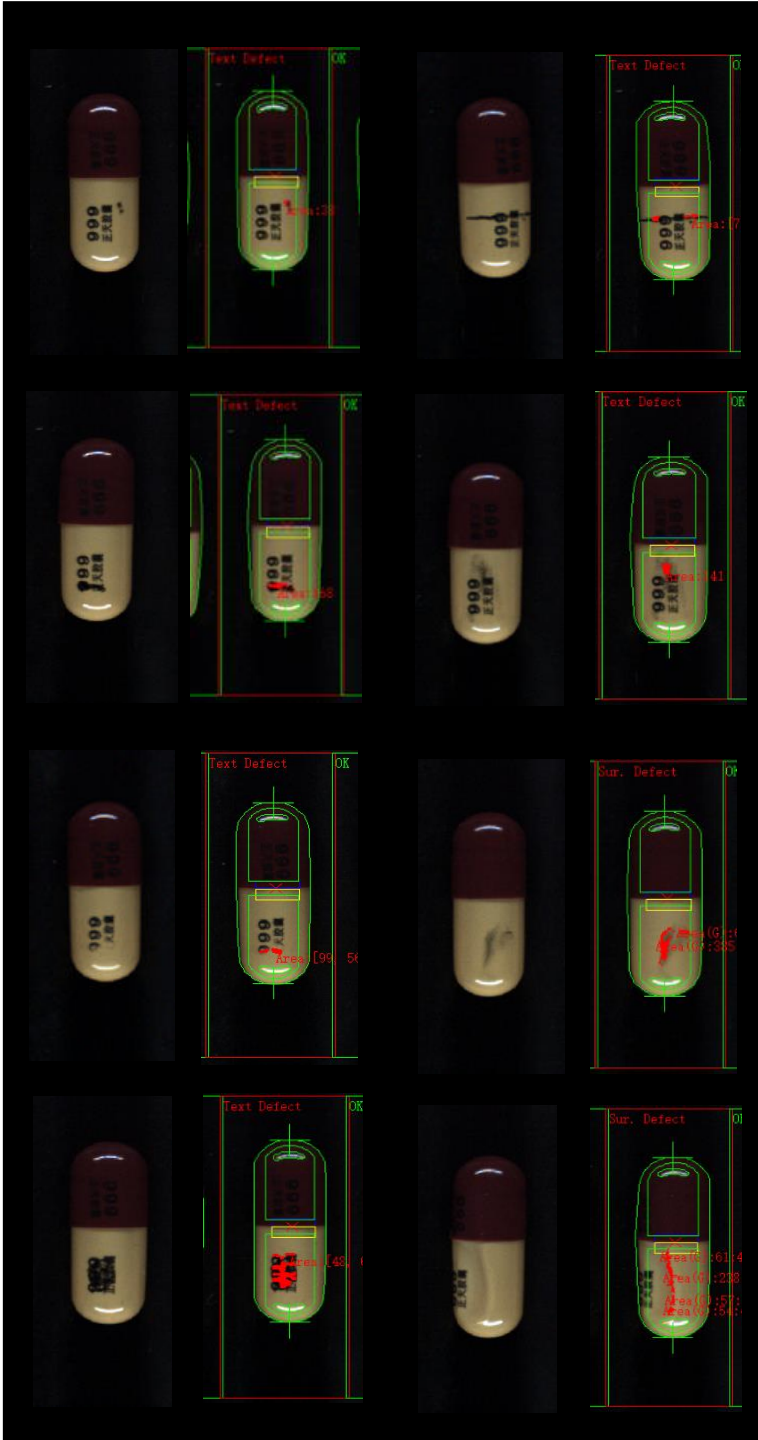
Capsules

Size 000, 00, 0, 1, 2, 3, 4, 5

## TAI

<b>Dimension</b>	L2000*W530*H1500mm
<b>Weight</b>	300KG
<b>Compressed Air</b>	40psi at 4SCFM
<b>Power</b>	220V 50hz 1kw
<b>Inspect Ability</b>	$\geq 40\mu\text{m}$
<b>Capacity (Max)</b>	100,000 pcs/hr (round/capsule) 50000 pcs/hr (oblong)

# AI FEATURE



Equipped with advanced visual monitoring system. Once the printing problem of capsules is found, the operation staff was immediately reminded to check and adjust the front-end printing process.

In addition to the printing defects, it can also reject black spots, color spots, sizes, foreign particles, etc..