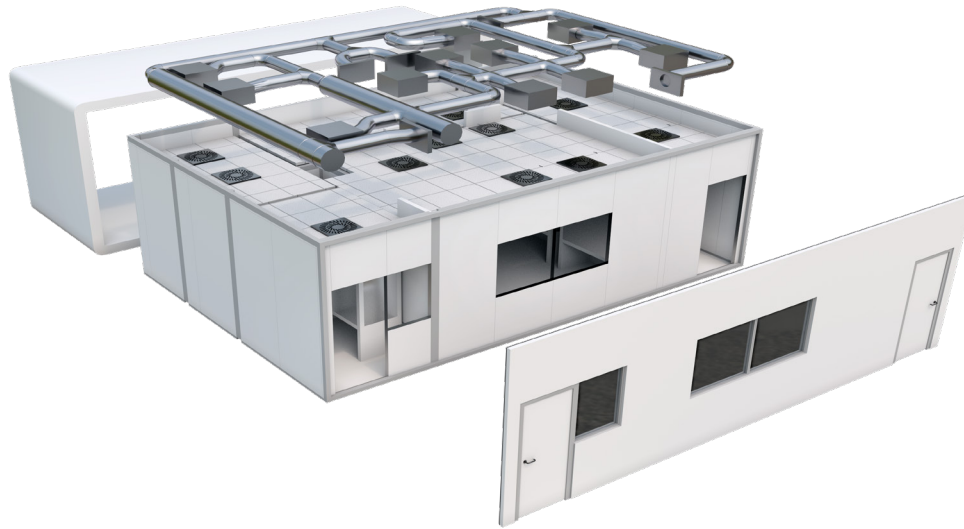


# NAYA Modulares

Cleanroom Innovation. Engineered for You.



# Solutions That Matter.

---

At NAYA Life Sciences, we specialize in designing and constructing advanced cleanroom environments tailored to the most demanding process technologies. Our solutions are highly adaptable and fully customizable to meet each client's unique requirements.

Our goal is to help our clients accelerate development and bring their products to market faster.

Our NAYA Modulares are engineered and prefabricated off-site, enabling rapid deployment and minimizing disruption. They can be precisely configured in size, layout, contamination control levels, and operational workflows, supporting even the most complex projects across biotech, pharma, electronics, and other industries.

With global delivery options and a strong commitment to quality, our modular cleanrooms are the ideal choice for companies looking to innovate and expand. From initial design to project completion and ongoing support, we are your trusted partner in creating high-performance, compliant clean environments.

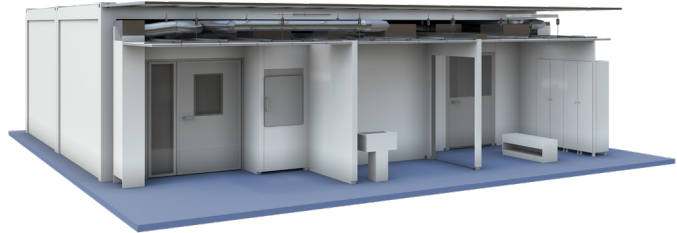


# Explore our Modular Offerings

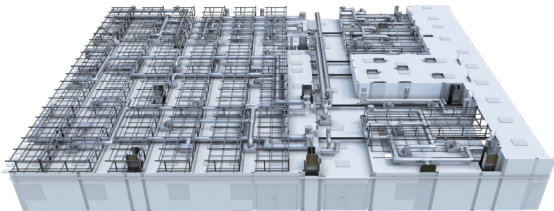
Precision-engineered, prefabricated modular cleanrooms tailored to your specific requirements:



Standard Module



Floorless Module

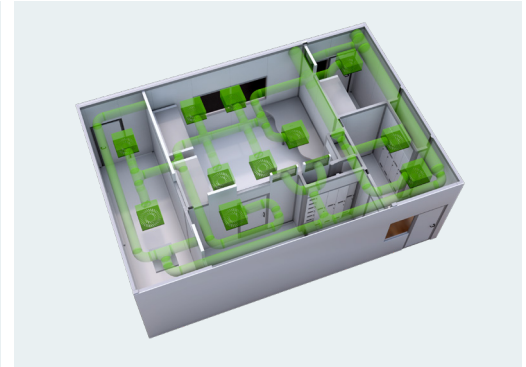
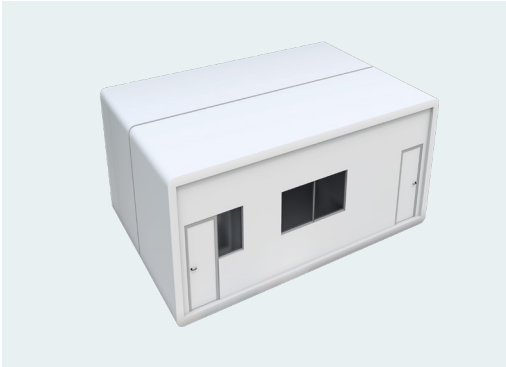


Technical Module



Ready-to-Buy Module

# Standard Module



A fully **customizable** and **scalable** solution for creating high-performance clean environments

Our Standard Modules are pre-engineered, prefabricated cleanrooms built off-site in controlled environments. Delivered ready for rapid installation, they are ideal for critical applications requiring strict contamination control. They can be used indoors or outdoors and are fully customizable and scalable to meet your specific needs.

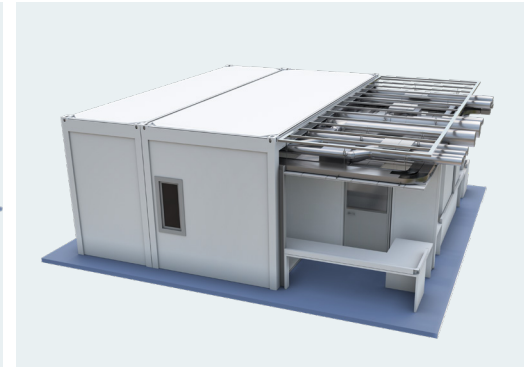
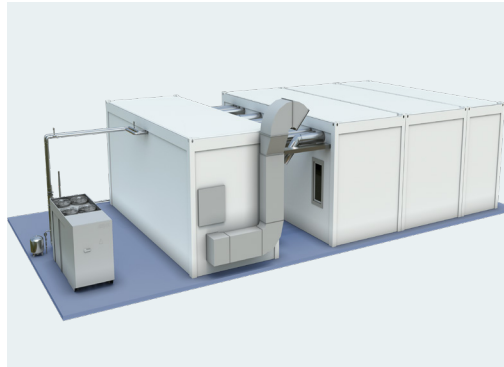
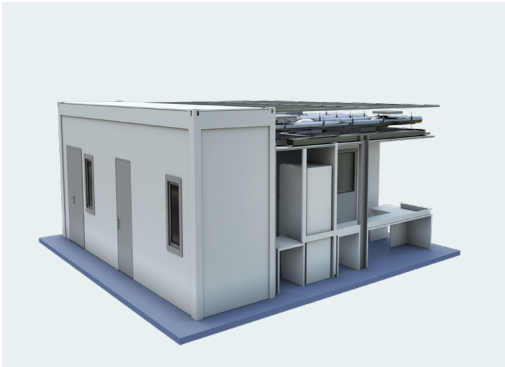
Each module features integrated technology, advanced HVAC with HEPA filtration, and microbiologically resistant materials, ensuring exceptional performance, easy cleaning, and long-lasting durability.

Designed to exceed industry standards, our modules provide precisely controlled environments for pharma, biotech, and research.

## Details

- **Convenient for Indoor and Outdoor Installation.**
- **HVAC, Automation Integrated.**
- **Integrated Process and/or Laboratory Equipment.**

# Floorless Module



## Seamless **Integration** with Your Facility

Designed without a built-in floor, our Floorless Modules are uniquely adaptable, allowing for installation at the same elevation as your existing floor. This eliminates the need for extensive floor preparation and reduces installation time and costs.

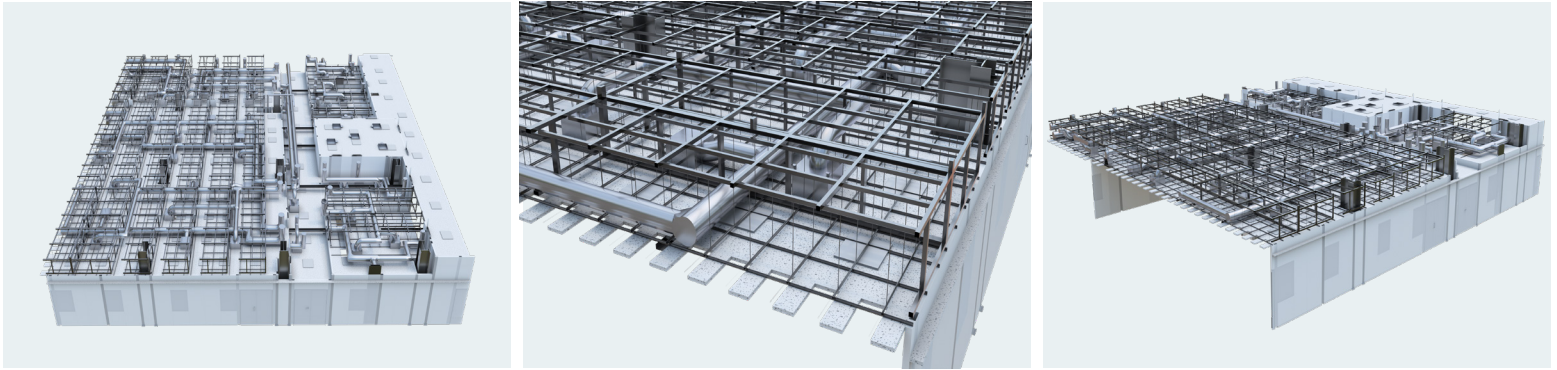
These modules support flexible reconfiguration and provide airtight, contamination-controlled environments, ideal for rapid deployment projects requiring minimal disruption.

Our Floorless Modules deliver the same advanced contamination control, durable materials, and airtight seals as our Standard Modules, offering rapid deployment and cost-efficient cleanroom solutions for industries demanding quick, reliable results.

### Details

- **Level Integration Design.**
- **HVAC, Automation Integrated.**
- **Engineered for Existing Flooring.**

# Technical Module



## Optimized for **Large-Scale & Semiconductor** Applications

Our Technical Modules accelerate the construction of large-scale or high-tech environments, such as semiconductor fabs and industrial laboratories. Fully prefabricated and integrated with HVAC, utilities, and filtration systems, these modules enable quick setup and expansion without compromising quality or compliance.

The system's modular design allows rapid reconfiguration, making it perfect for high-volume, precision manufacturing. Additionally, their streamlined installation process minimizes downtime, ensuring your operations can start sooner and operate efficiently.

### Details

- Fully Integrated Technical System.
- Optimized Modular Design for Rapid Deployment.
- High-Performance Contamination Control.

# Ready-to-Buy Modulares



## Immediate Availability, Swift Deployment

Our prefabricated, performance-tested cleanrooms are available directly from our facility. They can be shipped immediately and installed quickly, enabling your project to start without delays.

Fully customizable prior to delivery, these modules are designed to meet industry standards for pharmaceuticals, biotech, and life sciences industries. Their flexible design ensures seamless integration into your existing operations and infrastructure.

### Details

-  **In Stock and Ready for Fast Shipment.**
-  **Customizable to Your Specifications.**
-  **Pre-Built and Pre-Tested for Seamless On-Site Setup.**

# Benefits of NAYA Modulars

---

A **versatile** and **efficient solution** designed to create controlled environments that comply with stringent EU and USA regulatory standards.





### **Quick Installation**

Rapid deployment to minimize project timelines and downtime.

### **Flexible & Scalable**

Easily modified, expanded, or relocated to meet evolving requirements.

### **Cost-Effective**

Lower initial investment with shorter project durations.

### **High-Quality & Compliant**

Manufactured in controlled environments to ensure consistent quality and compliance.

### **Sustainable & Durable**

Eco-friendly materials to support green initiatives and ensure long-term performance.

# Support Services

---

## More than just a provider.

At NAYA, our commitment to quality goes far beyond the design and installation of your cleanroom.

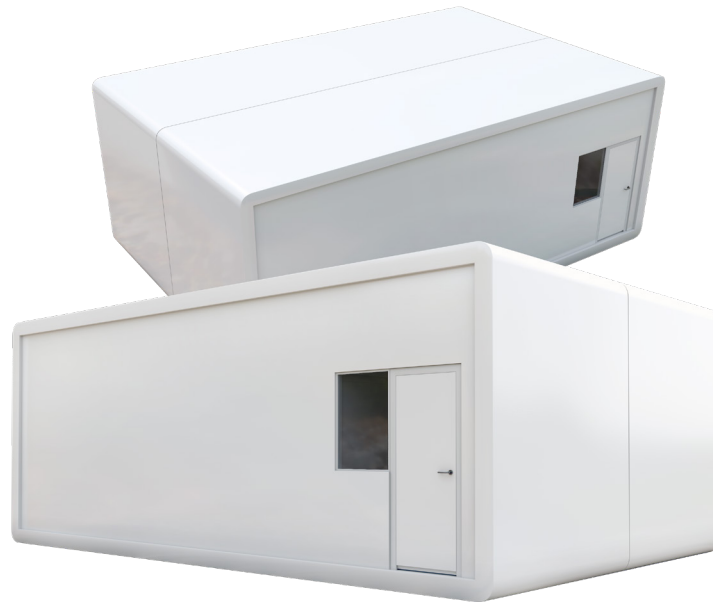
We provide a comprehensive suite of support services to ensure that your modular cleanroom continues to perform at the highest level.

Whether you're launching a new facility or maintaining an existing one, our expert team is here to help you achieve uninterrupted operations, regulatory readiness, and long-term value from your investment.



- 
- A modern office hallway with glass walls and a metal handrail. The hallway is brightly lit, and the glass reflects the surrounding environment. The floor is a light-colored, polished surface. The handrail is made of metal and runs along the length of the hallway. The overall atmosphere is clean and professional.
- **24/7 Technical Support & Emergency Assistance**
  - **Commissioning & Qualification Support**
  - **Maintenance & Calibration**
  - **Performance Monitoring & Optimization**
  - **Training & Operational Support**
  - **Compliance Audits**

# Solutions That Matter.



---

HQ | Verovškova ulica 55, 1000 Ljubljana, Slovenia  
[contact@naya-ls.com](mailto:contact@naya-ls.com)

[www.naya-ls.com](http://www.naya-ls.com)