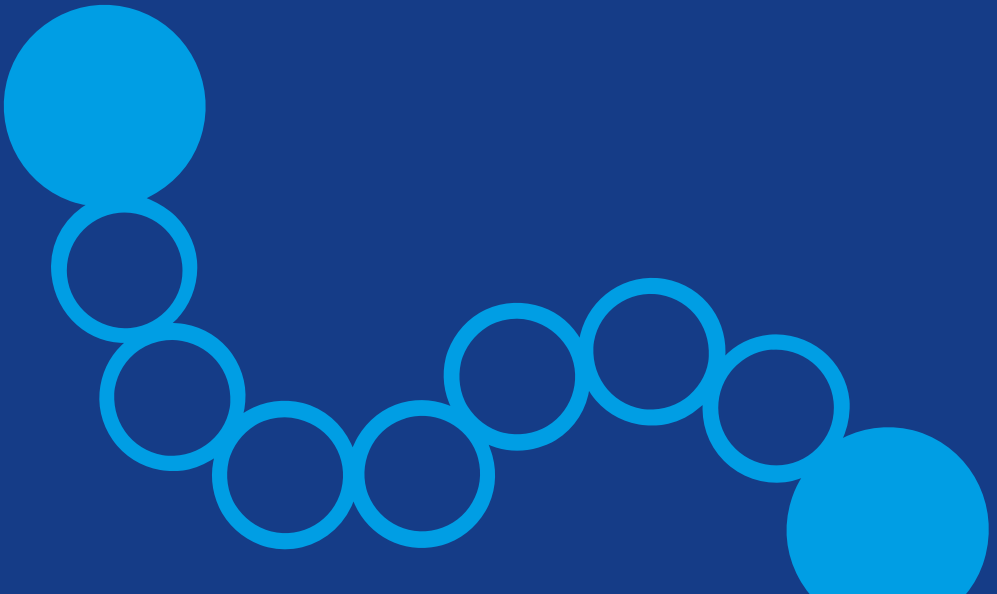


# Peptides

From Clinical to Commercial



# Your Expert Partner

for Peptide Manufacturing

With decades of experience and track-records in science, manufacturing, and regulatory compliance, we offer a **fully integrated supply solution** spanning both drug substance and drug product. From **early clinical development to successful commercialization**, we are the trusted **peptide partner you need** to bring your peptide programs efficiently and effectively to market.

## Our core peptide products and services include:

- Complex peptides & peptidomimetics.
- Peptide conjugation to various moieties (PEGs, small molecules, lipids, carbohydrates, cytotoxic payloads).
- Cyclic & multiple disulfide bridge peptides.
- Short peptides (up to 12 residues), often without HPLC purification.

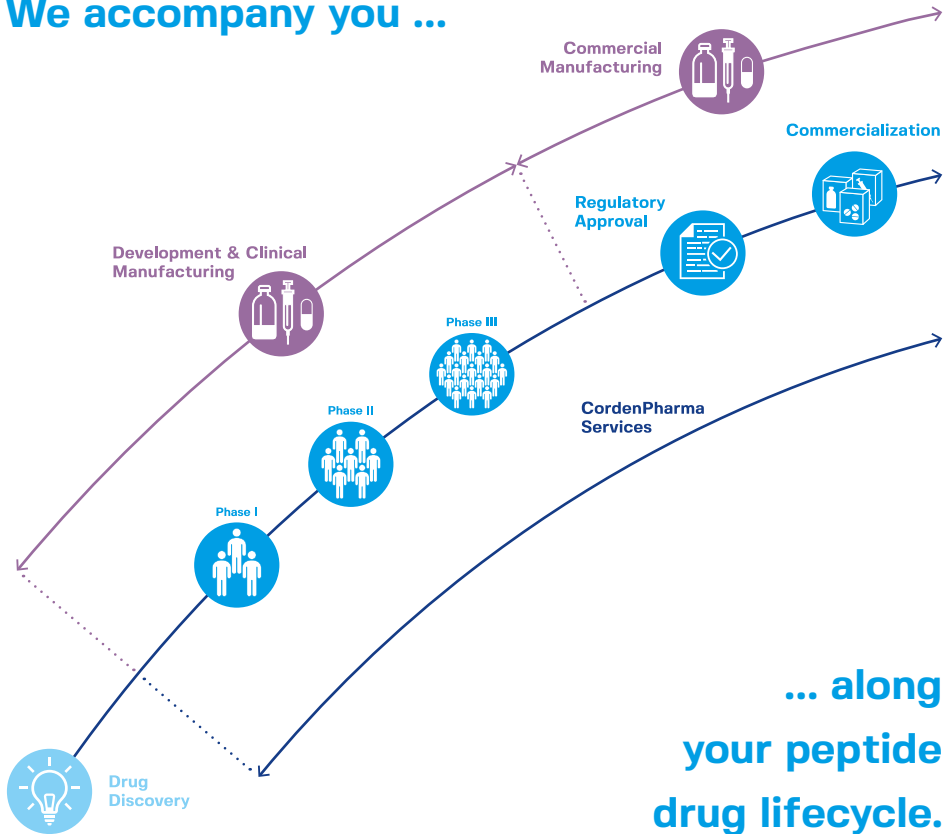


Quality &  
compliance first



Delivering precision,  
scalability and quality  
at every step.

We accompany you ...



... along  
your peptide  
drug lifecycle.

# Your One Partner Benefits



## **Integrated Peptide Supply**

Access fully-integrated solutions, from API development to finished drug product in injectable or oral dosage forms, within a global facility network.



## **Proven Peptide Manufacturing**

Leverage SPPS, LPPS, and hybrid approaches at any scale, with expert capabilities in peptide modifications, conjugations, peptidomimetics, and targeted payload delivery.



## **Sustainable Peptide Innovation**

Adopt more sustainable and cost-effective strategies like TAG-Assisted Peptide Synthesis (TAPS) - alongside innovations in Process Analytical Technology (PAT), continuous chromatography, spray-drying, and Super Fluid Chromatography (SFC).



## **Regulatory & Analytical Services**

Receive expert regulatory support throughout all lifecycle stages, along with comprehensive analytical development and validation services.



## **Trusted Quality & Compliance**

Rely on our commitment to seek the highest standards of quality & compliance as the foundation of all our activities and projects.



## **End-to-End Partnership Made Easy**

Benefit from a single point of contact for both APIs and drug products, with streamlined, transparent process collaboration, featuring real-time progress tracking (SmartSheet), and aligned project management by peptide experts across our facility network.

## Early Development to Clinical Stages

We offer **tailored CMC and regulatory support at every development phase**, providing end-to-end guidance aligned with global regulatory expectations. Our solutions are calibrated to deliver the right balance of speed, technical depth, and cost-efficiency to support your program's success.



Lyophilization  
room and oper-  
ator performing  
loading process.

Discover our  
Peptide services



# Your Reliable Partner

for Peptide-Based Drug Products

We are one of the few Western suppliers offering true end-to-end peptide manufacturing services **from drug substance to fill & finish injectable and oral solid dose manufacturing**, with geographical flexibility.

**Our GMP-compliant sterile injectable facility** offers comprehensive formulation development and manufacturing services for both aseptic and terminal sterilization fill-finish processes. We support a wide range of presentations, including Pre-Filled Syringes (PFS), ampoules, both liquid and lyophilized vials, as well as combination device products, and **packaging / labeling**.

**Our drug product innovation centre of excellence** specializes in the development of **oral peptide dosage forms**, with seamlessly and efficiently integrated services across the entire value chain.

Oral peptide dosage forms  
at CordenPharma.

Aseptic fill & finish  
at CordenPharma.





Expert personnel  
driving precision  
through process  
control.

## Commercial Manufacturing

We offer **proven scale-up capabilities** - from grams to metric tons - powered by decades of experience. Our team supports your program through every stage, ensuring consistent quality and a smooth path to commercial launch.

We are at the forefront of **sustainable peptide manufacturing**, leveraging **innovative technologies** such as TAG-Assisted Peptide Synthesis (TAPS), Process Analytical Technology (PAT), continuous chromatography, and Supercritical Fluid Chromatography (SFC) to minimize environmental impact while maximizing efficiency.

# Advanced Peptide Technologies

## Upstream & Downstream

### **Solid-Phase Peptide Synthesis (SPPS)**

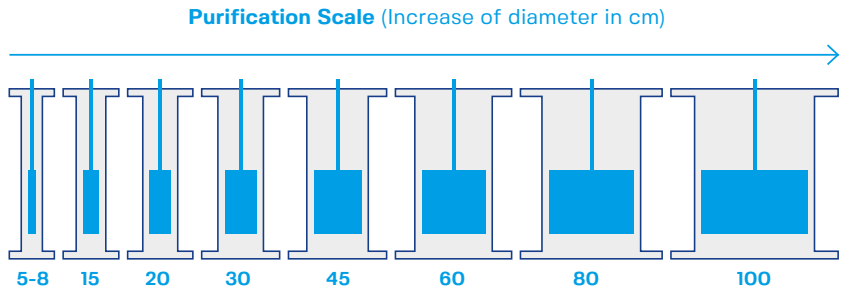
- Fully-automated GMP reactors ranging from 12 L to 10,000 L to produce grams to multi-100-kilogram quantities per batch under cGMP, offering batch size flexibility and efficiency.
- Robust and efficient large-scale peptide production, fully-supported by integrated solvent and waste-handling logistics, warehousing, and purpose-built site infrastructure.

### **Liquid-Phase Peptide Synthesis (LPPS)**

- Suitable technology for large-scale manufacturing of short peptides.
- Hybrid approach consisting of coupling of shorter SPPS-generated sequences in solution.
- Various peptide modifications and conjugations.

### **TAG-Assisted Peptide Synthesis (TAPS)**

- Advantages of SPPS and LPPS combined in one approach.
- Substantial reduction of PMI (>90% less solvents, >50% less raw materials).
- Standard small molecule manufacturing equipment used.
- Bottleneck in the upstream peptide-specific manufacturing assets eliminated.
- Aggregation-prone peptides easier to handle with TAPS than conventional SPPS.



**Your reliable partner** at any stage of development

### **Purification**

- HPLC batch purification with various sets of columns ranging from very small to >100 cm diameter.
- Multicolumn Counter-current Solvent Gradient Purification (MCSGP).

### **Isolation**

Various isolation techniques:

- **Lyophilization:** mostly suitable for small to medium scale.
- **Precipitation:** substantial expertise in peptide precipitation. Very cost-effective and suitable for any scale, especially for large volumes.
- **Spray-drying:** typically delivers bulk density between precipitated and lyophilized material. Suitable at any scale.

# Fully-Integrated Services

for All Your Product Needs

Products	Services	Manufacturing Sites
Peptide APIs	<ul style="list-style-type: none"><li>→ Largest SPPS reactor worldwide &amp; very large downstream capacity</li><li>→ Highly potent peptide manufacturing</li><li>→ Process &amp; analytical development</li><li>→ Upstream &amp; downstream capabilities</li><li>→ Clinical &amp; commercial supply from hundreds of g to hundreds of kg</li></ul>	CP Colorado, USA CP Frankfurt, DE CP Schweizerhalle, CH (Under construction, operational 2028)
Oral peptides	<ul style="list-style-type: none"><li>→ Formulation development</li><li>→ Permeability enhancement</li><li>→ Scale-up, clinical &amp; commercial supply</li></ul>	CP Plankstadt, DE
Injectable peptides	<ul style="list-style-type: none"><li>→ Formulation development</li><li>→ Clinical &amp; commercial supply of: pre-filled syringes, vials, lyophilized vials, auto-injector-finished product</li></ul>	CP Caponago, IT

\* **Our cGMP facilities** are fully compliant with current regulatory requirements and applicable standards, while undergoing frequent regulatory inspections and customer audits.





Peptides



Oligonucleotides



Lipids & LNPs



Injectables



Highly Potent  
& Oncology



Small Molecules

# CordenPharma

## International

Aeschenvorstadt 71  
4051 Basel  
Switzerland

[cordenpharma.com](http://cordenpharma.com)



Get in touch  
with our experts