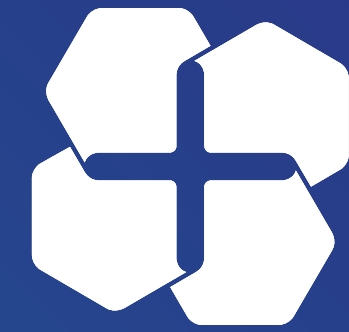


i+Med



BIOMEDICAL
INTELLIGENCE



COOPERATIVE OF SCIENTISTS

2013

2015

2024



**NEW
FACILITIES
Q4 2023**



BIOMEDICINE

TECHNOLOGY

i+Med
BIOMEDICAL
INTELLIGENCE

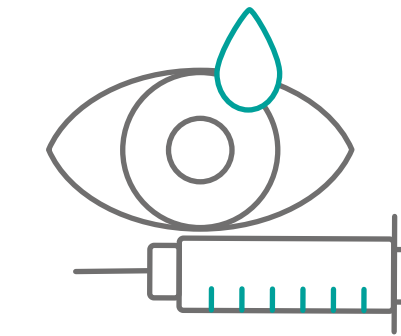
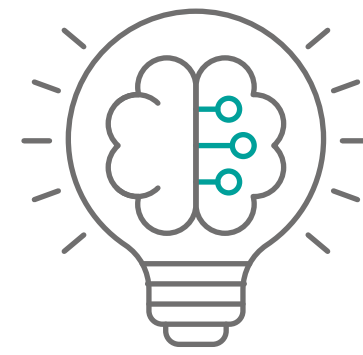
unikare
BIOSCIENCE

Sibari Republic
SCIENCE & COSMETICS

inmedical
therapeutics

onak
DENTÍFRICO

“Take care of your body,
it is the only place
you have to live”
(Jim Rohn)



3rd PARTY DEVELOPMENTS

- + Hydrogels
- + Drug delivery systems
- + Nanocarriers



MANUFACTURING OF FINISHED PRODUCTS

- + Long acting injectables
- + Eye drops
- + Topical use

ADAPTEK TECHNOLOGIES ← **Controlled release** → **ADAPTMED PRODUCTS**

+90

R&D
Projects

72

Researchers
in the team

14

National and
international awards

OUR PATENTS

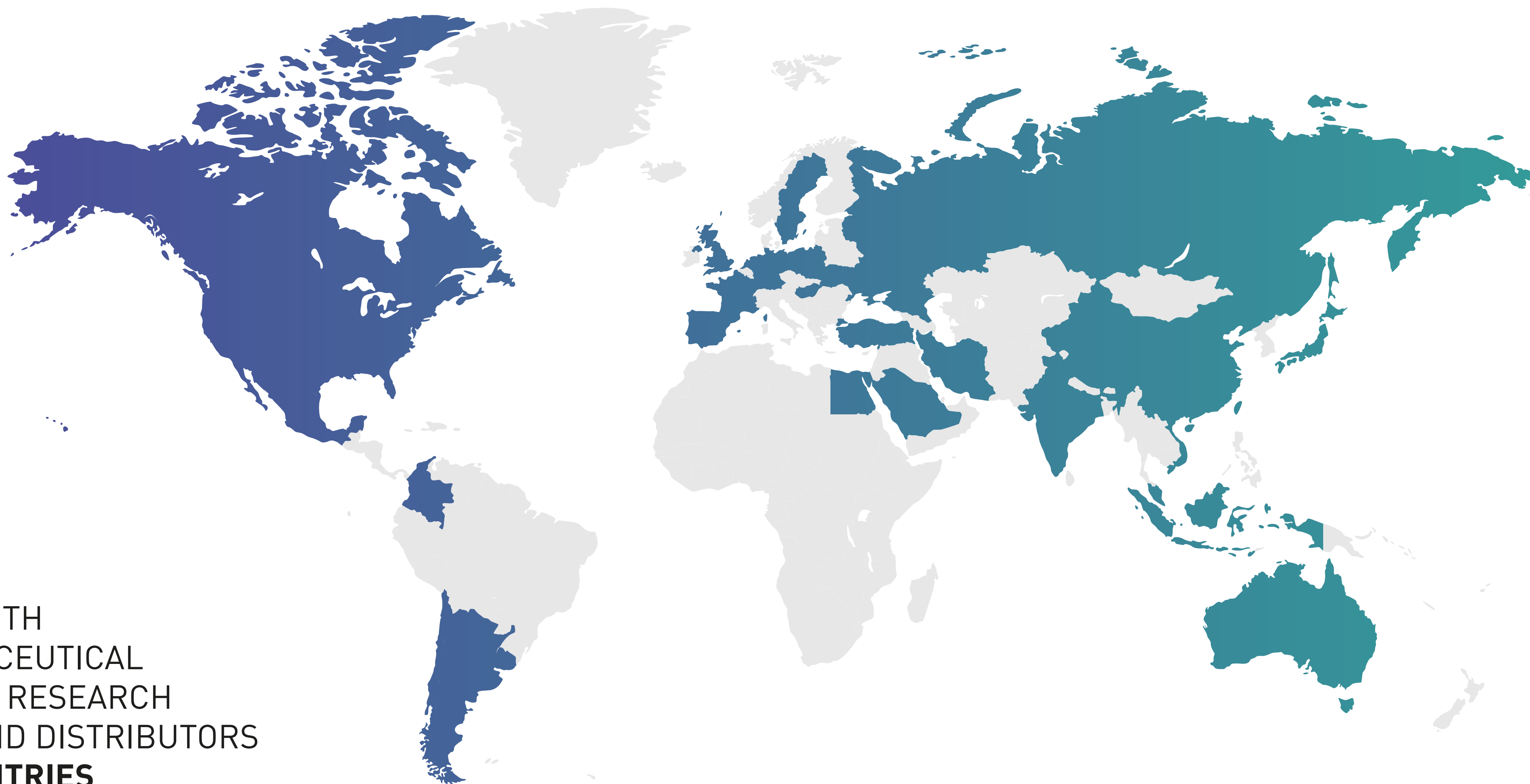


06

**Technological
Patents**

- + Controlled release
- + Nanocarriers
- + Coatings
- + Phytocannabinoids

i+MED'S GLOBAL FOOTPRINT



WE WORK WITH
BIOPHARMACEUTICAL
COMPANIES, RESEARCH
CENTERS AND DISTRIBUTORS
IN 30 + COUNTRIES

ADAPTMED

PRODUCTS

ABOUT OUR MEDICAL DEVICES



European product
manufactured at our
facilities in Spain



Clinical trials
finished and **MDR**
certificate ongoing.



SARE Technology®: We
have a proprietary of
innovative cross-linking
technology



Available for
distribution
worldwide



CE marked
products



Hyaluronic Acid
specialization



White label
manufacturing

INJECTABLES

MEDICAL DEVICES
BY i+MED





TrRH Joint
Injections

TrHLINE



2 MODELS

TrHLINE is a linear hyaluronic acid injection, designed for intra-articular administration to **restore the viscoelastic properties of synovial fluid** in traumatic and degenerative lesions of the joints, manifested by pain syndrome and reduced mobility.

- + **Lubricating** and **shock-absorption** effect.
- + **Reduction of pain** in the joint.
- + **Increases the functionality** of the joint.
- + **Easily reabsorbed** by the body.
- + Presented in 2 concentrations: **1% and 2%.**

TrHLINE

is available in two models

TrHLINE is supplied in a pre-filled and ready to use syringe.
Sterile needle 21-23G is recommended.
Posology: 1 injection/week x 3-week cycle.
+Low endotoxin level <0.20 EU/mL



MODEL	TrHLINE 1%	TrHLINE 2%
VISCOSITY (cP)	3.000- 6.000	40.000- 60.000
MOLECULAR WEIGHT	High molecular weight 2.0-2.2MDa	
OSMOLALITY	280-400mOsm/kg	
COMPOSITION	Hyaluronic acid (non-animal origin)	
pH	Physiological	
VOLUME	2mL	

TrHCROSS



TrHCROSS is the next generation of joint injections based on highly purified cross-linked hyaluronic acid.

This is a single injection, designed to relieve joint pain in osteoarthritis by supplementing natural joint fluid and replenishing lubricating and shock-absorbing functions.

- + **Reduces the pain** and increases the functionality of the joint.
- + **Lubricating** and shock-absorption effect.
- + **Improves mobility** and quality of life of the patient.
- + Can relieve pain up to **6 months**

TrHCROSS

Single joint injection

TrHCROSS is supplied in a pre-filled and ready to use syringe.

Sterile needle 19-21G is recommended.

Posology: Designed for a single administration 1x4.4 mL per treatment.

+Low endotoxin level <0.20 EU/mL



MODEL	TrHCROSS 2%
VISCOSITY	120.000-170.000 cP
OSMOLALITY	200-400 mOsm/kg
COMPOSITION	Cross-linked hyaluronic acid (non-animal origin)
pH	Physiological
VOLUME	4,4mL

TrH COMPLEMENTS



TrHPROTECT
Collagen Nutraceutical



TrHCREAM
Joint and muscle recovery cream



TrHPHYTO CBD
CBD based local relief cream



BtH Dermal
Fillers

BtHLINE

BtHLINE is a biocompatible linear hyaluronic acid hydrogel intended as a dermatological treatment for aesthetic purposes.

- + **Restores** the structures of the aging skin
- + Improves skin **hydration**
- + **Revitalizes** skin and improves its firmness



BtHLINE

BtHLINE is presented in a pre-filled syringe of 1mL, ready for use. It is supplied in a single blister together with two sterile needles (30G) for single use, as accessories.

+Low endotoxin level <0.20 EU/mL



MODEL	BtHLINE 1.4%
VISCOSITY (cP) *	14.000 - 20.000
MOLECULAR WEIGHT	High molecular weight
COMPOSITION	Hyaluronic acid (non-animal origin)
ENDOTOXIN CONTENT	<0.20 EU/mL
SIZE	1mL

* Viscosity measured at shear rate (SR) 1s at 25°C. Measured after setriling.

CE 0318

BtHCROSS

- + Restores the **loss of volume** and facial contour.
- + **Fills in the folds and wrinkles** that appear with age.
- + **Redefines the contour** and gives fullness to the lips.
- + Presented in **3 different concentrations**: 1.5%; 1.75%; 2%

3 MODELS

BtHCROSS is a biocompatible **cross-linked hyaluronic acid hydrogel** designed to restore and correct facial volumes and fill wrinkles and folds.



BtHCROSS

is available in three models

- + **Sterile product.**
- + **Biocompatible product.**
- + Thanks to its exclusive composition it allows you to achieve a **natural look.**

Depending on the area to be treated and the need of the patient, there are 3 different models that provide the best solution for each need.

- + **Low endotoxin level <0.20 EU/mL.**



BtHCROSS 1.5%	Corrects superficial wrinkles such as perioral lines. Enhances and profiles lips
BtHCROSS 1.75%	Corrects medium to deep skin depressions such as nasolabial folds
BtHCROSS 2%	Remodels and restores volume of the facial contour

CE 0318

A large, faint, stylized graphic of a human eye is centered in the background. The eye is composed of concentric, wavy lines representing the iris and retina, with a central pupil area. The lines are thin and light blue, creating a subtle watermark effect against the solid blue background.

O_pH

Ophthalmic
Viscoelastic
Devices

OpHLINE

3 MODELS

OpHLINE is an ophthalmic viscosurgical device (OVD) indicated as an adjunct during surgical procedures involving the anterior chamber of the eye, especially in cataract surgery, including the extraction of the lens and the insertion of intraocular lenses.



- + **Lense removal.**
- + **IOL implantation.**
- + **High protection** of the endothelium.
- + **Total and safe extraction.**
- + **Excellent visibility** of the operating field.
- + **Sterilization** by moist heat.



OpHLINE

is available in three models

i+Med has developed **3 models** of viscoelastics with different properties to provide better options **for a variety of surgical needs.**

MODEL	OpHLINE 1.4%	OpHLINE 2.0%	OpHLINE 3.0%
VISCOSITY (cP)	15.000 - 20.000	40.000 - 60.000	180.000 - 220.000
BEHAVIOR	Cohesive	Cohesive-Dispersive	Viscoadaptative
MOLECULAR WEIGHT	High molecular weight 2.0-2.2MDa		
COMPOSITION	Hyaluronic acid (non-animal origin)		
SIZE	1.2mL		
OSMOLALITY	280-400mOsm/kg		
pH	7.2 - 7.6		
CANNULA	27G	25G	25G

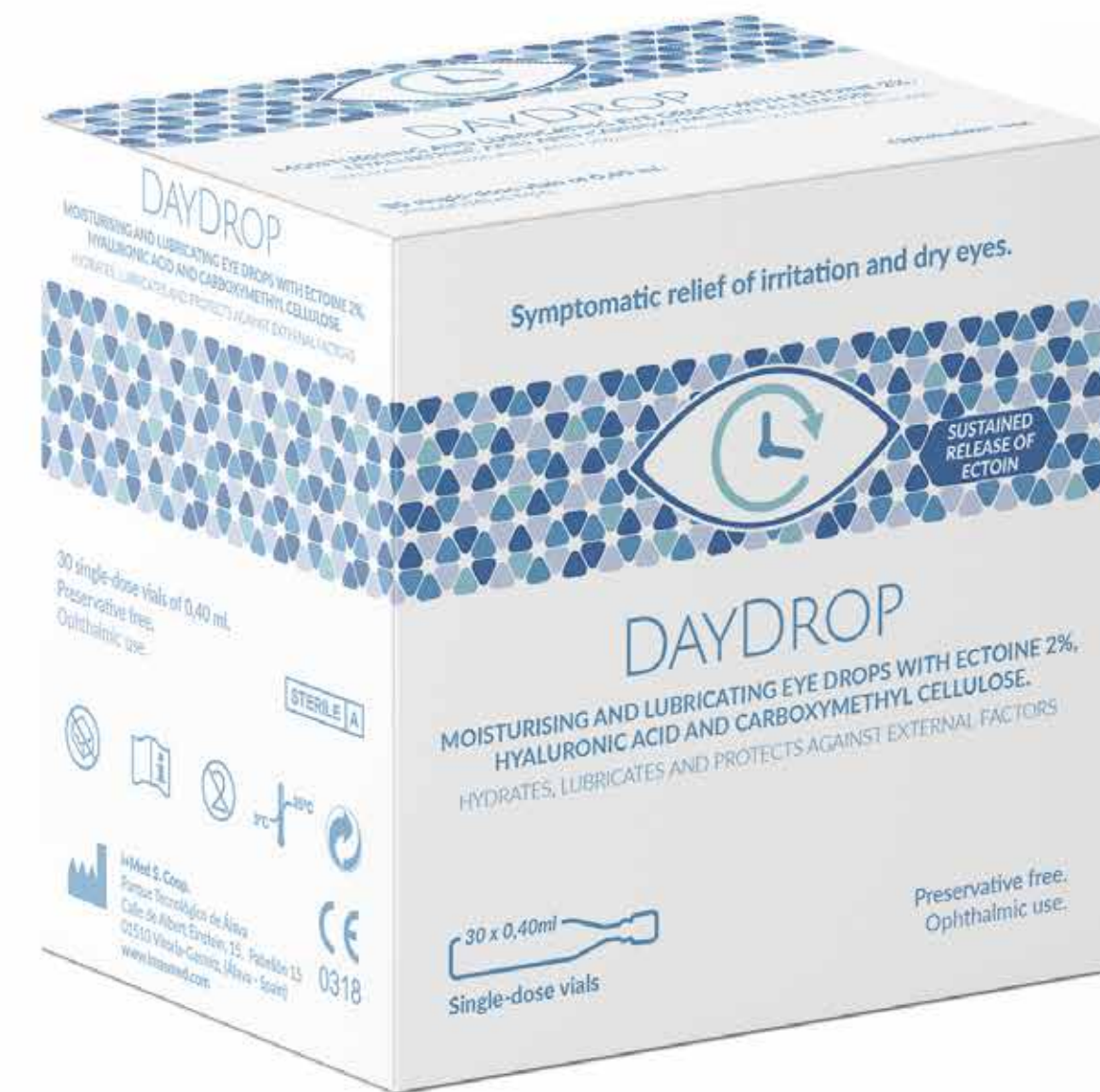
The logo features the text "OTC DayDrop" centered on a dark blue background. The letters "O", "T", and "C" are large and filled with a white, honeycomb-like pattern. The words "DayDrop" are in a smaller, plain white font to the right of the "C". Behind the text is a large, faint graphic of an eye, with a curved arrow pointing from the top of the eye down towards the "DayDrop" text.

OTC DayDrop

DayDrop Eye drops

DayDrop is an ophthalmic solution indicated to **alleviate the ocular dryness and irritation** produced by environmental factors (wind, dust, air conditioning, dry heat), prolonged use of screens or contact lenses and some pathologies that present the above mentioned symptoms.

**PRESERVATIVE AND
PHOSPHATE FREE**

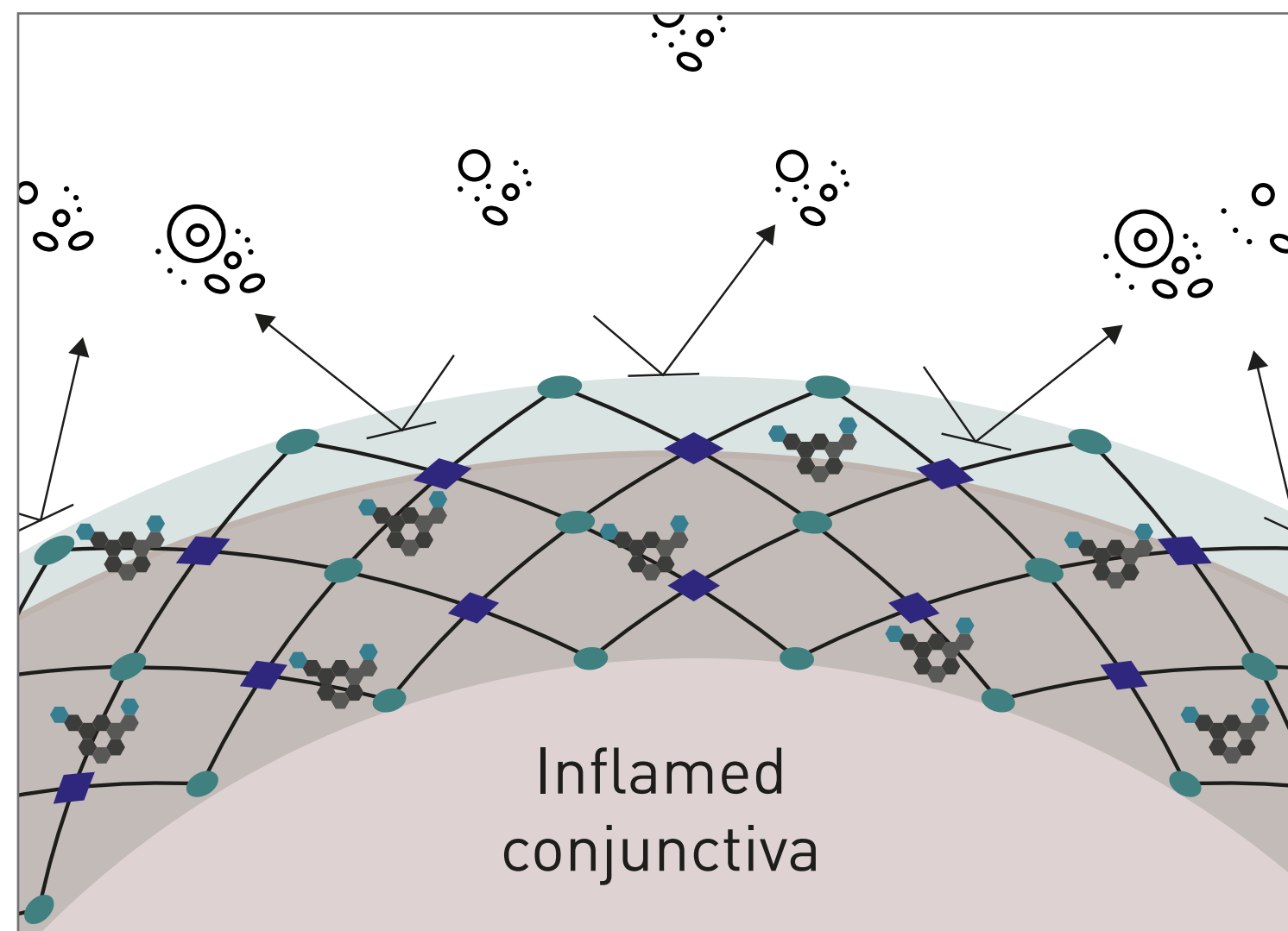


- + Ectoine.
- + Hyaluronic acid.
- + Carboxymethylcellulose
- + 12h sustained release**

CE 0318

How DayDrop acts

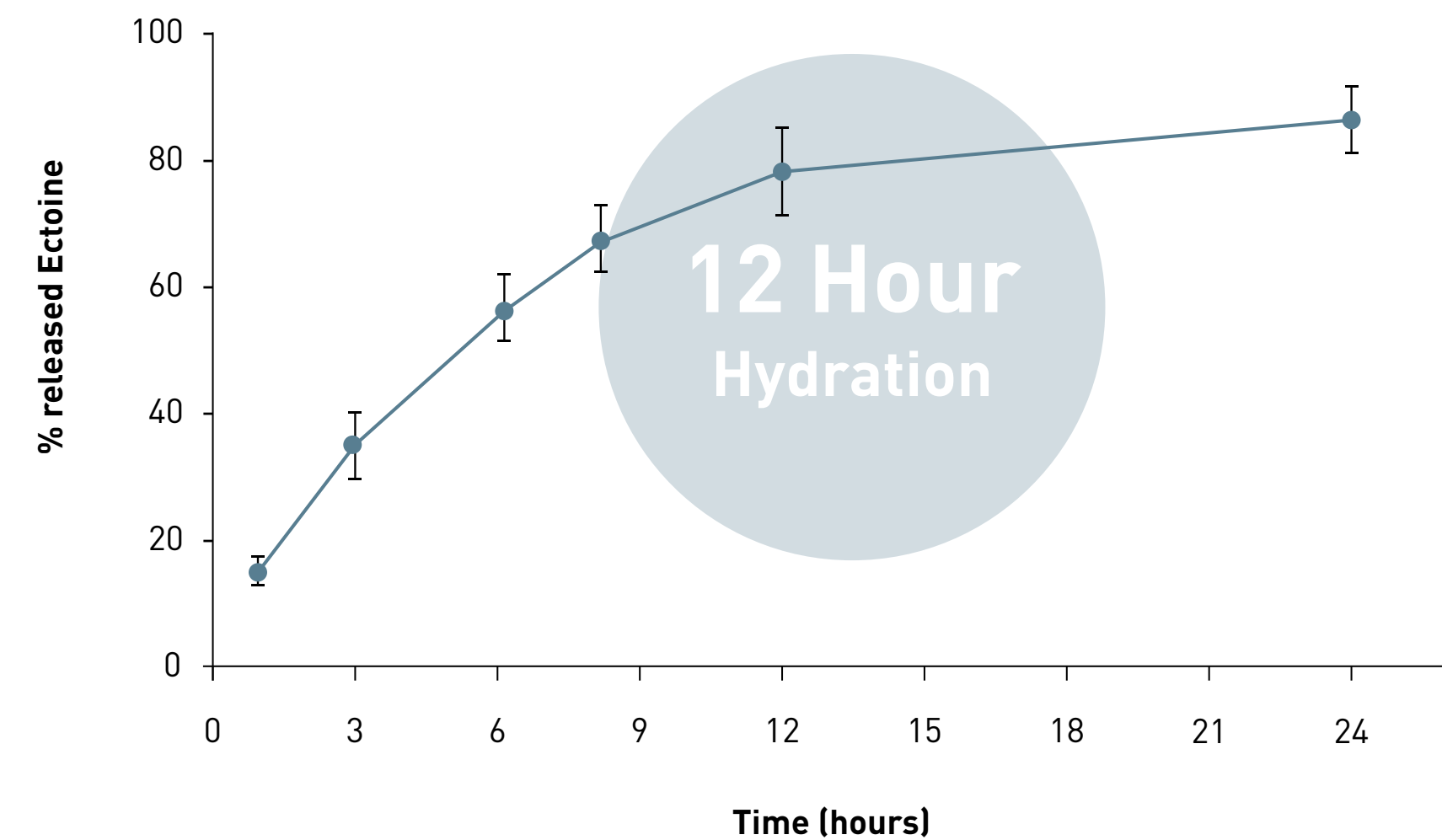
TRIPLE ACTION

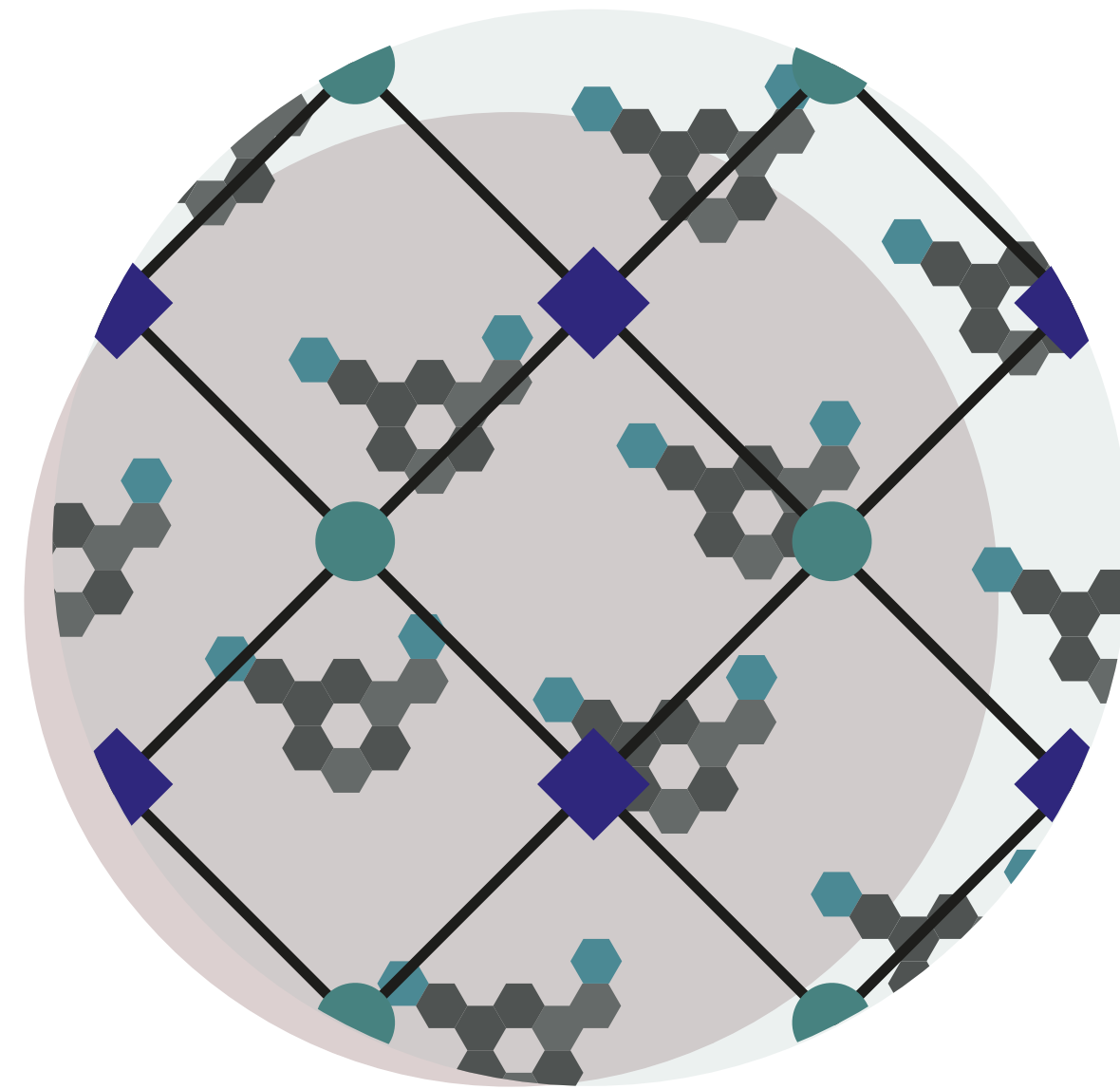


- HA
- CMC
- ⚗ Ectoine
- ⊙ Allergens



Curve showing **the release of Ectoine in DayDrop** within 12 hours





- + **DayDrop** combines rheological properties of **Hyaluronic Acid and Carmellose**
- + **Synergies between the two polymers in Daydrop increase the retention time** on the ocular surface.
- + Allows the **Ectoine** to be **released in a sustained manner**.
- + **Anti-inflammatory action** without side effects, achieving a treatment of irritation¹.
- + **DayDrop** protects against external allergens relieving **allergy symptoms**.

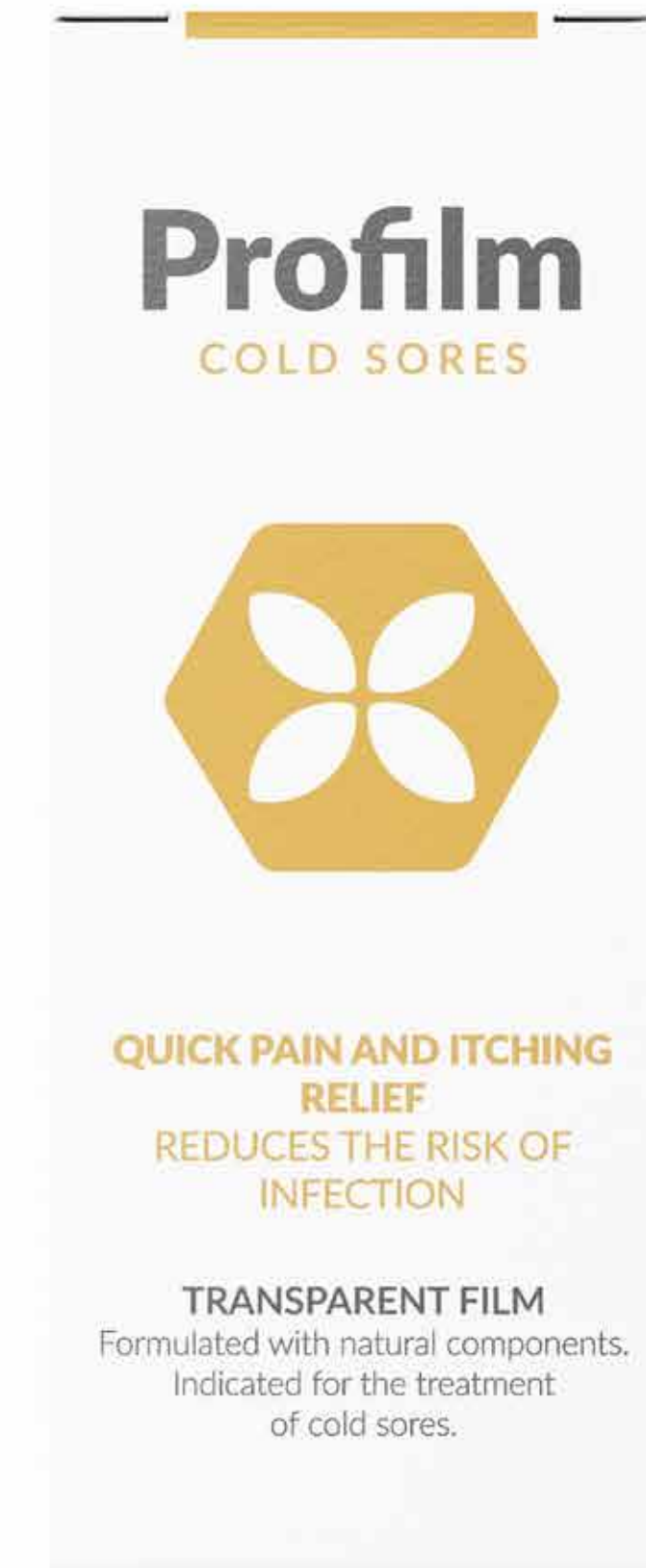
1. Bilstein A, Heinrich A, Rybachuk A, MÖsges R. Ectoine in the Treatment of Irritations and Inflammations of the Eye Surface. Biomed Res Int. 2021;2021. doi:10.1155/2021/8885032

OTC Profilm

Profilm Cold Sores

Profilm Cold Sores (Herpes Labial) is a liquid dressing for topical use, indicated to relieve the initial symptoms of cold sores.

- + **Forms an invisible** film that adapts to the shape of the skin.
- + **Relieves the first symptoms of cold sores** and reduces the duration of the outbreak.
- + **Reduces the risk of infection and contagion** of the virus.
- + **Relieves itching and pain.**
- + **Contains propolis and tea tree extracts**, stabilized vitamin C.



CE 0318

Profilm composition

TEA TREE EXTRACT

- + Antioxidant
- + Antiseptic
- + Antiviral
- + Antibacterial
- + Antifungal
- + Anti-inflammatory



PROPOLIS

- + Antioxidant
- + Antimicrobial
- + Antifungal
- + Anti-inflammatory
- + Immunomodulator
- + Healing
- + Anesthetic

VITAMIN C

- + Antioxidant
- + Antiviral
- + Stimulates local immunity
- + Accelerate the healing-process



Profilm Mouth Ulcers

Profilm Mouth Ulcers is a liquid topical dressing for the temporary relief of pain caused by certain lesions of the oral mucosa such as ulcers or minor aphtae.

- + **Forms a protective film** that remains on the site of application, promoting healing.
- + **Relieves pain and protects** / isolates against external agents.
- + **Reduces the extension and duration of canker sores.**
- + **Contains propolis**, tea tree extracts and stabilized vitamin C.



REVODIOL

ATOPIC LINE

51% dermatitis reduction
59% itching/pain reduction

ACTIVE INGREDIENTS

- + **Hidroviton Plus:** Immediate and long lasting hydration
- + **CBD:** Anti-inflammatory, antioxidant and antimicrobial properties
- + **AnnonaSense CLR:** Reduces sensitivity and itching and improves skin appearance



CALMING CREAM 50ML	CALMING LOTION 50ML
<p>3% CBD</p> <p>Soothes and prevents skin prone to eczema and dermatitis</p>	<p>2% CBD</p> <p>Immediate effect fast relief for the most sensitive skins</p>
<p>+ Decrease in erythema.</p> <p>+ Increase in cell renewal in the short and long term.</p> <p>+ Decrease in transepidermal water loss in the short and long term.</p>	
<p>Patented Phytocannabinoid solubilization technologies</p>	

ATOPIC LINE

CBD and nGP Technology® based cosmetic line

ACTIVE INGREDIENTS

- + **Hidroviton Plus:** Immediate and long lasting hydration
- + **CBD:** Anti-inflammatory, antioxidant and antimicrobial properties
- + **AnnonaSense CLR:** Reduces sensitivity and itching and improves skin appearance



SMOOTHING BRUME 75ML

2% CBD

+ **Oat neuropeptide**

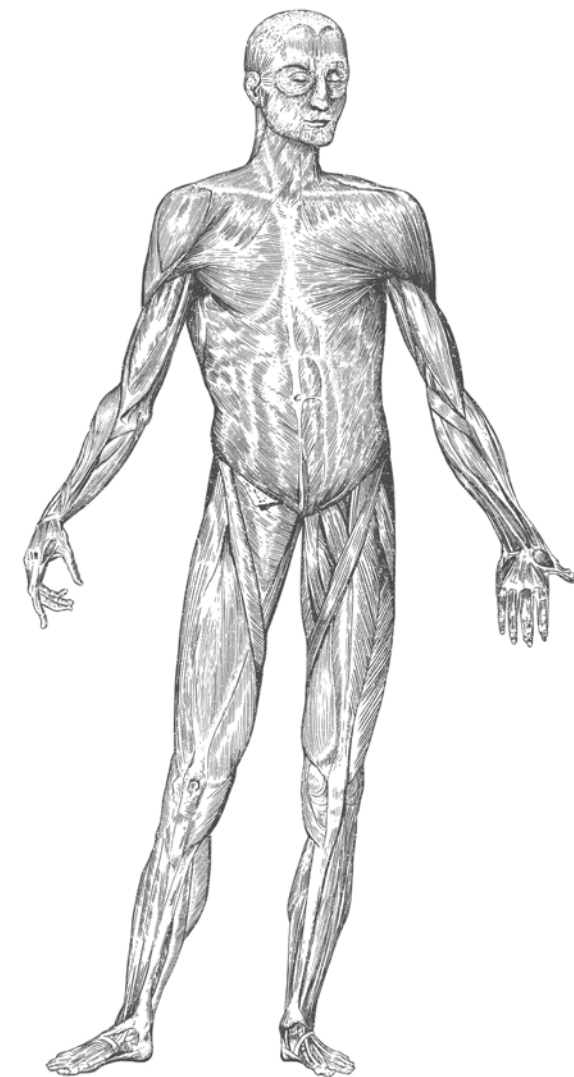
Soothes itchy and dry skin,
visibly reduces redness

NATURAL EXTRACTS

+ **Mallow extract**

+ **Dandelion**

THANK YOU



“Take care of your body,
it is the only place
you have to live”
(Jim Rohn)

i+MED, S. COOP.

PARQUE TECNOLÓGICO DE ÁLAVA
C/ Albert Einstein 15, nave 15, 01510
Vitoria-Gasteiz, Álava, Spain

CONTACT US

business@imasmed.com

IMASMED.COM