



SHREE GANESH **REMEDIES** LIMITED
excelling in chemistry

CORE COMPETENCIES IN
**PHARMACEUTICAL INTERMEDIATES &
FINE CHEMICALS**

ISO 9001, 14001, 45001 and Indian GMP

www.ganeshremedies.com



ABOUT SGRL

SGRL has developed its core competencies as an expert in handling hazardous reactions by constantly developing new products across wide range of technologies. The product portfolio is built around High-Performance Chemicals, API intermediates and Fine-Chemicals while the technology portfolio is built around hazardous reactions, low temperature and high-pressure reactions along with access to continuous manufacturing. Our R&D and Pilot Plants are well capable of scaling up any process from few grams to kilo scale to multi-ton lot scale. We manufacture our products on multipurpose plant which are ISO and GMP certified. Also, dedicated plant facility is employed for long-term projects.

Since
2004

Area
40,000 sq m

Total Blocks
7 (2 new upcoming)

Total Employees
220+

R&D Strength
25+

Last Annual Turnover
14.88 Million USD

Accreditation



10+
Specialty and
Fine Chemicals



30+
Pharmaceutical
Intermediates



10+
Chemical Reaction
Technologies

CORE COMPETENCIES

Halogenation

Chlorination

- Chlorination using Thionyl Chloride, Sulphuryl Chloride, Oxalyl Chloride and Mesityl Chloride
- Chlorination using HCl gas and Chlorine Gas
- Chlorination under UV light

Bromination

- Bromination using Bromine, HBr and other bromide salts
- Bromination under UV light

Iodination

- Iodination using Iodine, KI and Copper Iodide

Methylation, Alkylation & C-C bond formation

Friedel-Crafts Reaction

- Using AlCl₃, FeCl₃

DMS & DES Alkylation

- From room temp to high temp

Pd-cat coupling

- Heck, Suzuki

Cyanation

- Using CuCN, KCN, NaCN

Grignard

- Mg or AlkMgX/ether; Vinyl MgCl

Oxidation

- Using TEMPO and NaOCl
- Using permanganate salts
- Using metals such as Fe, Cu, Co and Cr

Reduction

- Catalytic H₂ reduction upto 40 bar using Ra-Ni, Pt/C, Pd/C and Rt/C
- Reduction using Hydride Salts
- Reduction using pyrophoric reagents such as triethylaluminum and dibal

Low-Temperature Chemistry

- Metalorganic reactions
- Selective oxidations and hydrogenations
- Cryogenic quenching
- Selective C-C bond formation

CORE COMPETENCIES

Halogenation

Strength

- In-house dedicated R&D team for chlorination project.
- 2 patents are under filling process showcasing innovation.
- Chlorination using HCL gas with in-house HCL gas generation.
- Chlorination and Bromination with UV light for high purity products.

Grignard

Strength

- Dedicated block for Grignard reactions.
- In-house nitrogen generation plant to maintain continuous inert atmosphere throughout reaction for safe and efficient reactions.

Friedel Craft's

Strength

- Dedicated block for Friedel Craft's bulk production with output of 2MT per day.
- Dedicated in-house effluent treatment facility of spent waste and potential to convert the same to by-product for sustainability of the process

Suzuki & Sonagashira Coupling

Strength

- Scaled up challenging commercial batches in Suzuki coupling reactions upto 200 kgs output.
- Trained chemist to handle precious metal based catalyst to handle challenging reaction.

Custom Synthesis

Strength

- In-house R&D strength for quick screening of molecule.
- Kilo lab available with dedicated team for process optimization and scale up screening.
- Dedicated Pilot plant for process optimization and validation.
- Joint IP from the patented product belongs to customer while maintaining the data secrecy.

PRODUCTS BY CHEMISTRY

Heterocycle Synthesis

Nitration

Chiral Resolution

Esterification

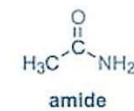
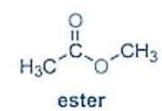
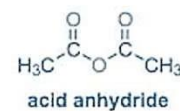
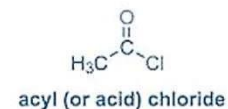
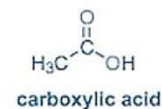
Dehalogenation

Diels-Alder Reaction

Hydrolysis

Silyl Derivatives

Oxime Formation



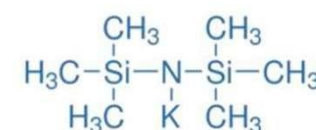
Cyclopropane



Cyclobutane



Cyclopentane



** To know more about chemical reaction technologies please contact us or visit www.ganeshremedies.com**

PRODUCTS BY SEGMENTS



HUMAN HEALTH API INTERMEDIATES

Intermediates for...

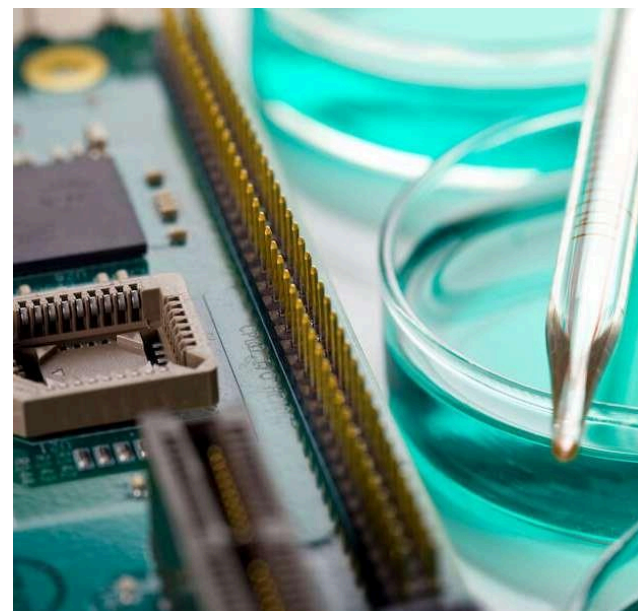
- Antipsychotic API's
- Antidepressant API's
- Oncology API's
- Diuretic API's



CUSTOM SYNTHESIS

Custom Synthesis for..

- New Molecule Entities
- Exclusive toll Manufacturing
- Custom research & manufacturing



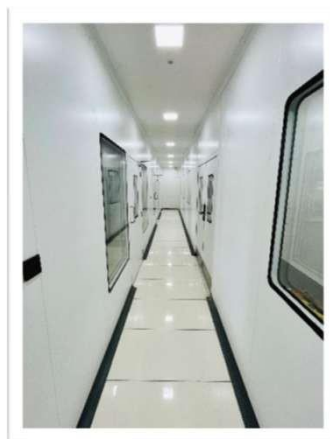
SPECIALTY & FINE CHEMICALS

Chemical Intermediates for...

- Electronic Chemicals
- Polymer Chemicals
- Fragrance Chemicals

R&D STRENGTH

PROCESS CHEMISTRY LABS	KILO-LAB	ANALYTICAL LABS
<ul style="list-style-type: none">- 0.1-10 Ltr glass reactors- 2 Ltr photo reactor- 0.2-2 Ltr SS316 & HC22 autoclave with 100 bar pressure & 200 deg C capability- Glass flow reactor- 8 standard fume-hoods- 4 walk-in fume-hoods	<ul style="list-style-type: none">- 10-30 Ltr glass reactor- 25 Ltr SS316 autoclave with 100 bar pressure & 200 deg C capability- 30 Ltr cryogenic reactor with temp up to (-)50 deg C- 50 Ltr vacuum tray dryer- 5 standard fume-hoods- 1 walk-in fume-hoods	<ul style="list-style-type: none">- GC & GCMS- HPLC- IR- Autotitrator- Auto KF- TLC- Turbidity Meter- Tinto Meter



PILOT FACILITIES

12 Reactors with a
Total capacity of 6900 Ltr

8 Glass Lined Reactors
From 600 to 1000 Ltr

4 Stainless Steel Reactors
From 600 to 1000 Ltr

3 Filter Dryers (up to 250 Ltr)
ANFD, RCVD & VTD

2 Hydrogenation Reactors
2 Ltr & 25 Ltr, 100 bar

4 Distillation Setup
Short Path & High Fractional



MANUFACTURING INFRASTRUCTURE

35 Glass Lined Reactors

1000 to 25,000 Ltr
*2 cryogenic (-30 Deg C)

28 Stainless Steel Reactors

1000 to 15,000 Ltr
*1 cryogenic (-40 Deg C)

3 Autoclave Reactors

2000 Ltr
*3 autoclaves up to 40 bar)

9 Dryers

1000 to 2500 Ltr
*Atmospheric & vacuum dryer

8 Distillation Setup

Upto 50 Stages
*High vacuum upto 1mbar
*Short path distillation

2 Warehouse

Upto 500 Pallets
*Storage Tanks available in addition to warehouse upto 100 KL

PACKAGING OPTIONS





Administration Block



Manufacturing Block



Sampling Room



Sample Storage Area



Warehouse

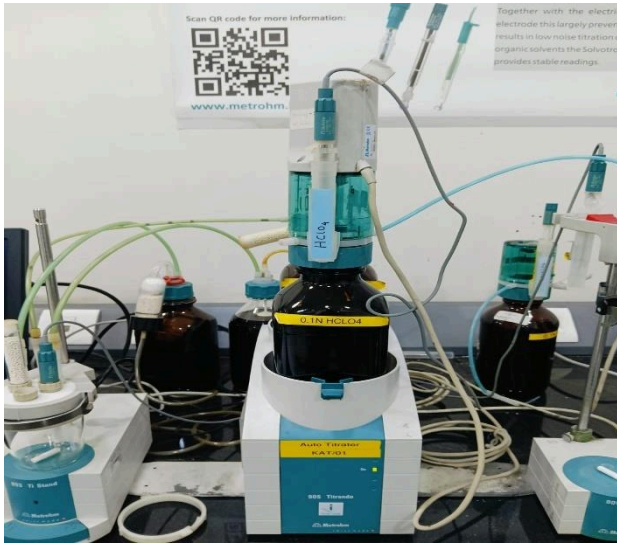


Plantation Area

QMS FACILITIES

- Agilent Gas Chromatograph: **9 No.**
- Agilent Gas Chromatograph & Mass Spectrum: **1No.**
- Shimadzu G.C Head Space: **1No.**
- Shimadzu & Agilent HPLC: **4 No.**
- High Precision Analytical Balance: **3 No.**
- Lovibond Tinto meter
- Metro-Ohm Auto Titrator
- Metro-Ohm Auto KF
- Hazen Meter
- Turbidity meter
- Auto Melting-Point Analyser
- Total QA Strength: **7 Employees**
- Total QC Strength: **14 Employees**





Karl Fisher Instrument



Luvibond Tintometer



HPLC Area



GC- MS



Head space - GC



Stability Chamber

QUALITY ACCREDITATION'S

- ISO 9001:2015 Certified (**Bureau Veritas, UK Accredited**)
- ISO 14001:2015 Certified (**Bureau Veritas, UK Accredited**)
- ISO 45001:2018 Certified (**CCPL**)
- DSIR Recognised In-house R&D Lab
- Bronze Certified Ecovadis
- dun & bradstreet
- US FDA FEI No



dun & bradstreet

THANK YOU



SHREE GANESH **REMEDIES** LIMITED

excelling in chemistry

info@ganeshremedies.com

www.ganeshremedies.com

Last updated: 21st Feb 2024

14

Confidential. Restricted circulation.