

Contact us

杭州唐维过滤器材有限公司

Hangzhou Tanvi Filtering Equipment Co., Ltd.

Office: Antong S&T Park, Future S&T City, Hangzhou, China

Factory in Hangzhou: 298 Yunxi Road, Hangzhou City

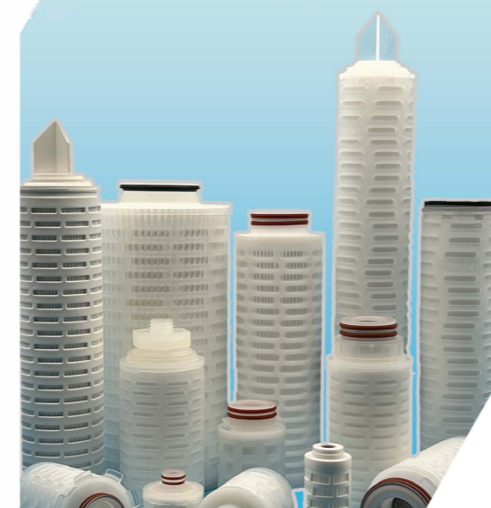
Factory in Huzhou: High-tech Zone of Huzhou City

Telephone: +86-571-88663715

Fax: +86-571-88663751

Web: www.tanvifilter.com

TANVI[®]
FLUID FILTRATION SOLUTIONS



Solutions of Fluid in APIs 原料药流体过滤解决方案

Hangzhou Tanvi Filtering Equipment Co., Ltd.
杭州唐维过滤器材有限公司

Company Profile

Hangzhou Tanvi Filtration Equipment Co., Ltd. focuses on the research and development and application of microfiltration products. Relying on its excellent manufacturing capabilities, it manufactures a variety of filtration products and provides filtration, separation and purification solutions for global customers.

Tanvi mainly produces pleated filter Cartridges such as PP, PES, PTFE, PVDF, Nylon, GF, ACF; capsule filters, high flow filter cartridges, syringe filters, various stainless steel filters and complete set of filtration systems.

Tanvi has three production bases with total area of more than 10000sq.m. Two of the production bases have 100,000-class clean workshops. The annual output is over 1 million filter cartridges and over 10,000 sets stainless steel filter housings. It provides many high-quality filtration products for various industries such as electronics, medicine, chemical industry, food and beverage, optics, film, ink, seawater desalination, oil exploration, and water treatment.

While having its own laboratory, Tangwei also cooperates with third-party testing agencies, which can provide customers with multiple inspections and verifications such as microbial challenge experiments, filter cartridge integrity tests, chemical compatibility, and biological safety.



CONTENT

Solutions

Filtration Solutions of Pharmaceutical Water	01
Filtration Solutions of Compressed Air	02
Filtration Solutions of Fermentation Air	03
Filtration Solutions of Antibiotic	04
Filtration Solutions of Sterile APIs	05
Filtration Solutions of Decarbonizing in APIs	06
Filtration solutions of Wastewater Reuse	07
Medium and Small Scale Filter Solutions	08

Filter Housings

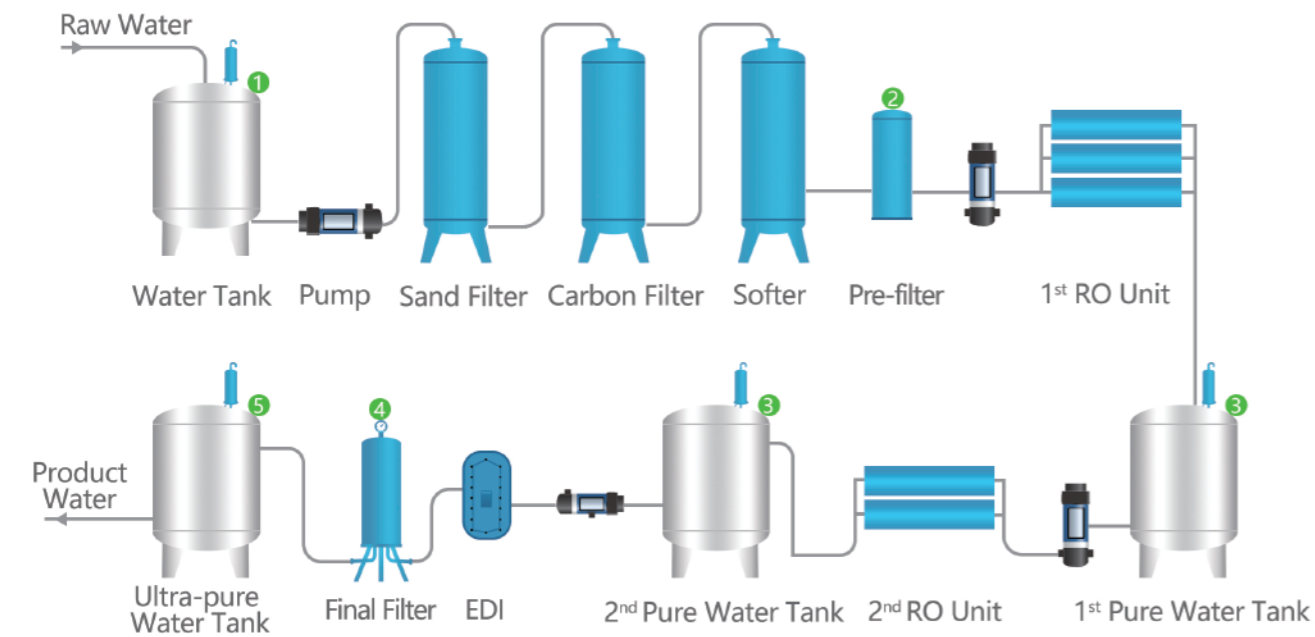
Single-round In-line Filter Housings	09
Single-round T-style Filter Housings	10
Multi-round T-style Filter Housings	11
Cross-style Filter Housings	12
Swing Decarbonization Filters	13
Heatable Vent Filters	14
Stainless Steel Bag Filters	14
Hoisted Solid-Liquid Separation Filters	15
Corrosion Resistant Stainless Steel Filters	16
Corrosion Resistant Polymer Filters	16
Stainless Steel Y-style Filters	16
Stainless Steel Basket Filters	16

Filter Cartridges

Pleated PP Filter Cartridges	17
PES Membrane Filter Cartridges	18
PTFE Membrane Filter Cartridges	19
Full-PFA Membrane Filter Cartridges	19
Full-PVDF Membrane Filter Cartridges	19
PVDF Membrane Filter Cartridges	20
Nylon Membrane Filter Cartridges	20
Pleated GF Filter Cartridges	21
ACF Filter Cartridges	21
Capsule Filters ,Φ72mm, Tri-clamp	22
Capsule Filters ,Φ72mm, Hose Barb	22
Capsule Filters ,Φ89mm, Tri-clamp	23
Disc Filters	23
Syringe Filters	24
High Flow Filter Cartridges	24
High Flow Dust Removal Filters	25
Sintered PA/PE Filter Cartridges	25
Sintered PTFE Filter Cartridges	26
String Wound Filter Cartridges	26
Melt-blown Filter Cartridges	27
Sintered SS Mesh Filter Cartridges	27
Sintered SS Power Filter Cartridges	28
Pleated SS Wires Filter Cartridges	28
Titanium Rod Filter Cartridges	29
Liquid Filter Bags	29
Membrane Filters	30
Filters for Vacuum Feeder	31

Filters Integrity Testers

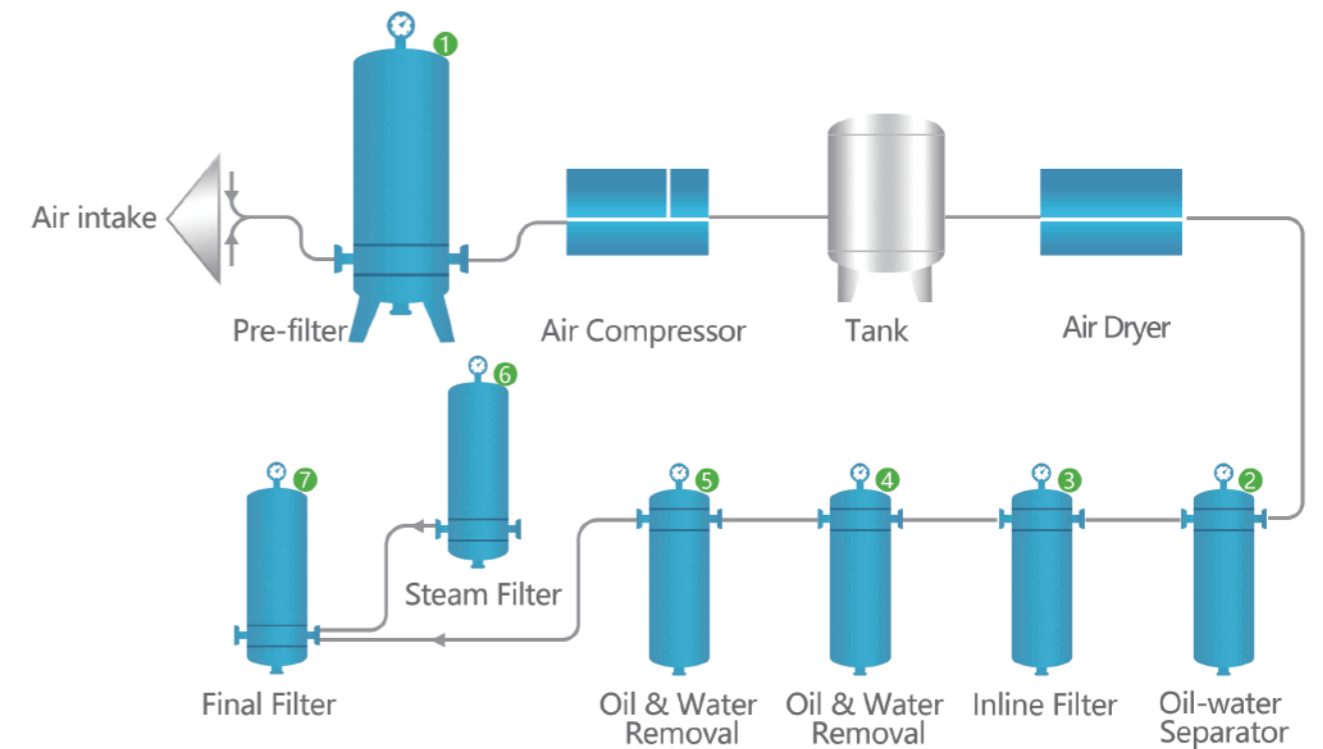
WORKS Filtration Solutions of Pharmaceutical Water



Recommended Product

No.	Filter Housings	Filter Cartridges
1	SS Vent Filters/ Capsule Filters	ORP-PP /LPF -PTFE Filter Cartridges
2	Guard Filter Housings	PP Pleated/Spun/String Wound Filter Cartridges
3	SS Heatable Vent Filters	LPF- PTFE Membrane Filter Cartridges
4	Sanitary T-style Filter Housings	HPPS- PES Membrane Filter Cartridges
5	Sanitary Heatable Vent Filters	LPF -PTFE Membrane Filter Cartridges

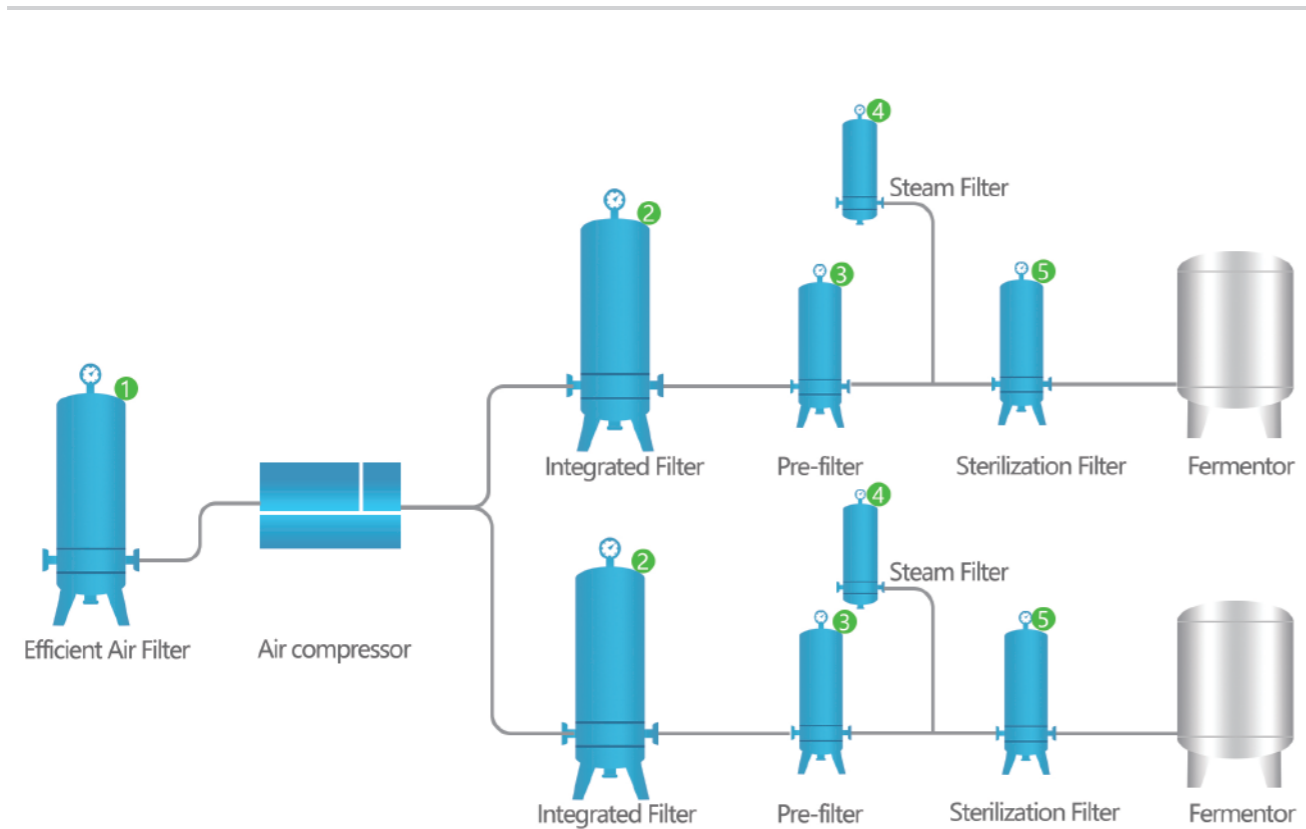
WORKS Filtration Solutions of Compressed Air



Recommended Product

No.	Filter Housings	Filter Cartridges
1	Cross-style Filter Housings	High Flow Dust Filter Cartridges
2	Cross-style Filter Housings	STC-GF Filter Cartridges
3	Cross-style Filter Housings	STT-GF Filter Cartridges
4	Cross-style Filter Housings	STA-GF Filter Cartridges
5	Cross-style Filter Housings	STH-GF Filter Cartridges
6	Cross-style Filter Housings	Pleated SS Wires Filter Cartridges
7	Cross-style Filter Housings	STS-PTFE Membrane Filter Cartridges

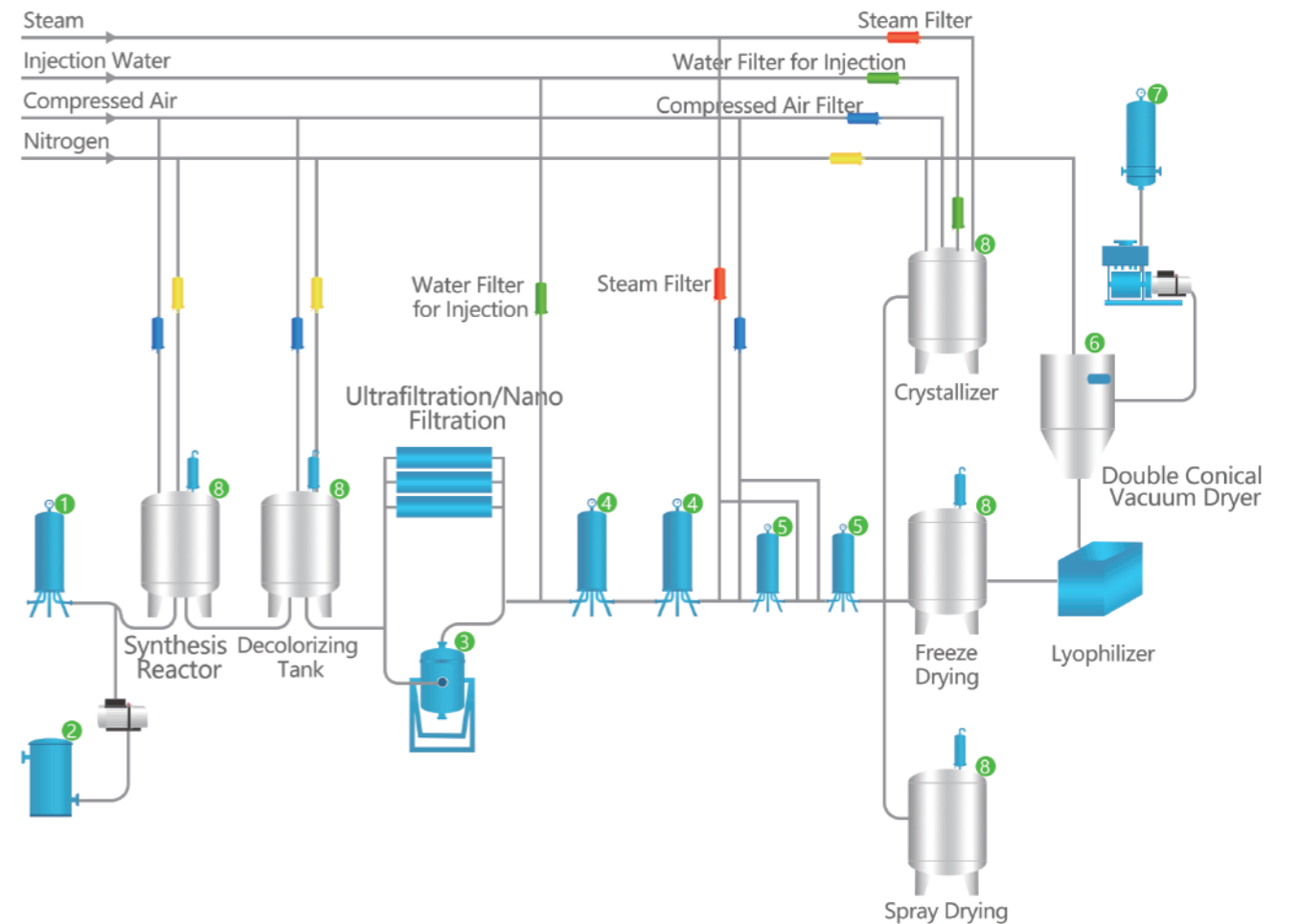
WORKS Filtration Solutions of Fermentation Air



Recommended Product

No.	Filter Housings	Filter Cartridges
1	Pre Filter Housings	High Flow Dust Removal Filter Cartridges
2	Intergrated Air Filters	Microfiber Dust Removal Filter Cartridges
3	Cross-style Filter Housings	Pleated Complex Fiberglass Filter Cartridges
4	Cross-style Filter Housings	Pleated Stainless Steel Wires Filter Cartridges
5	Cross-style Filter Housings	DF Series Air Sterilizing Filter Cartridges

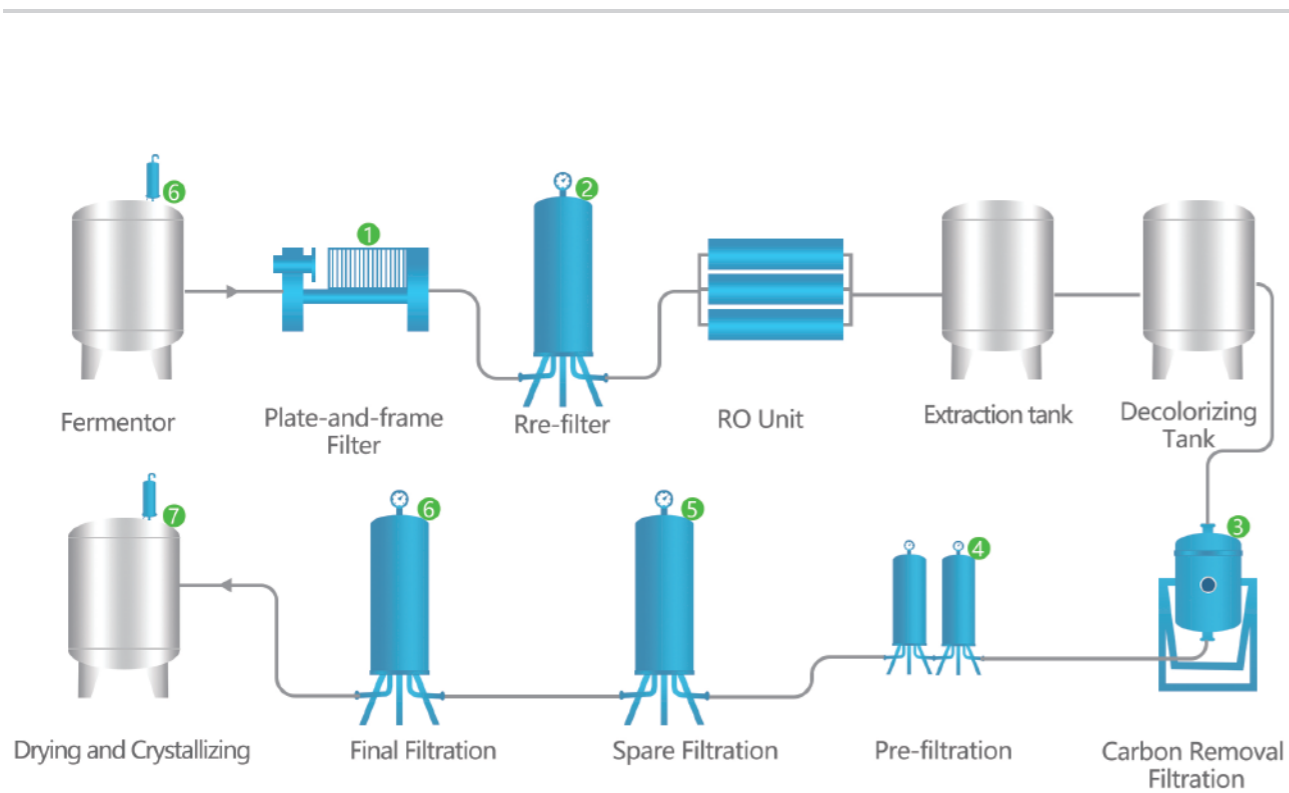
WORKS Filtration Solutions of Antibiotic



Recommended Product

No.	Filter Housings	Filter Cartridges
1	T-style Liquid Filter Housings	PRP Series Pleated PP Filter Cartridges
2	Basket Strainer/Y-style Filter	Basket Filter/Bag Filters
3	Swing Decarbonization Filter	Titanium Rod Filter /PA Sintered Filter/Stainless Steel Filter
4	T-style Filter Housings	HEPS-PES/LHF-PTFE/LPN-Nylon Membrane Filter Cartridges
5	T-style Filter Housings	HPPS-PES/LHF-PTFE/LPN-Nylon Membrane Filter Cartridges
6		Stainless steel Vent Filter
7	Vacuum Pump Protection Filters	Pleated/Sintered Filter Cartridges
8	Sanitary Heatable Vent Filters	KLPP-PTFE/LPFA-PTFE Membrane Filter Cartridges

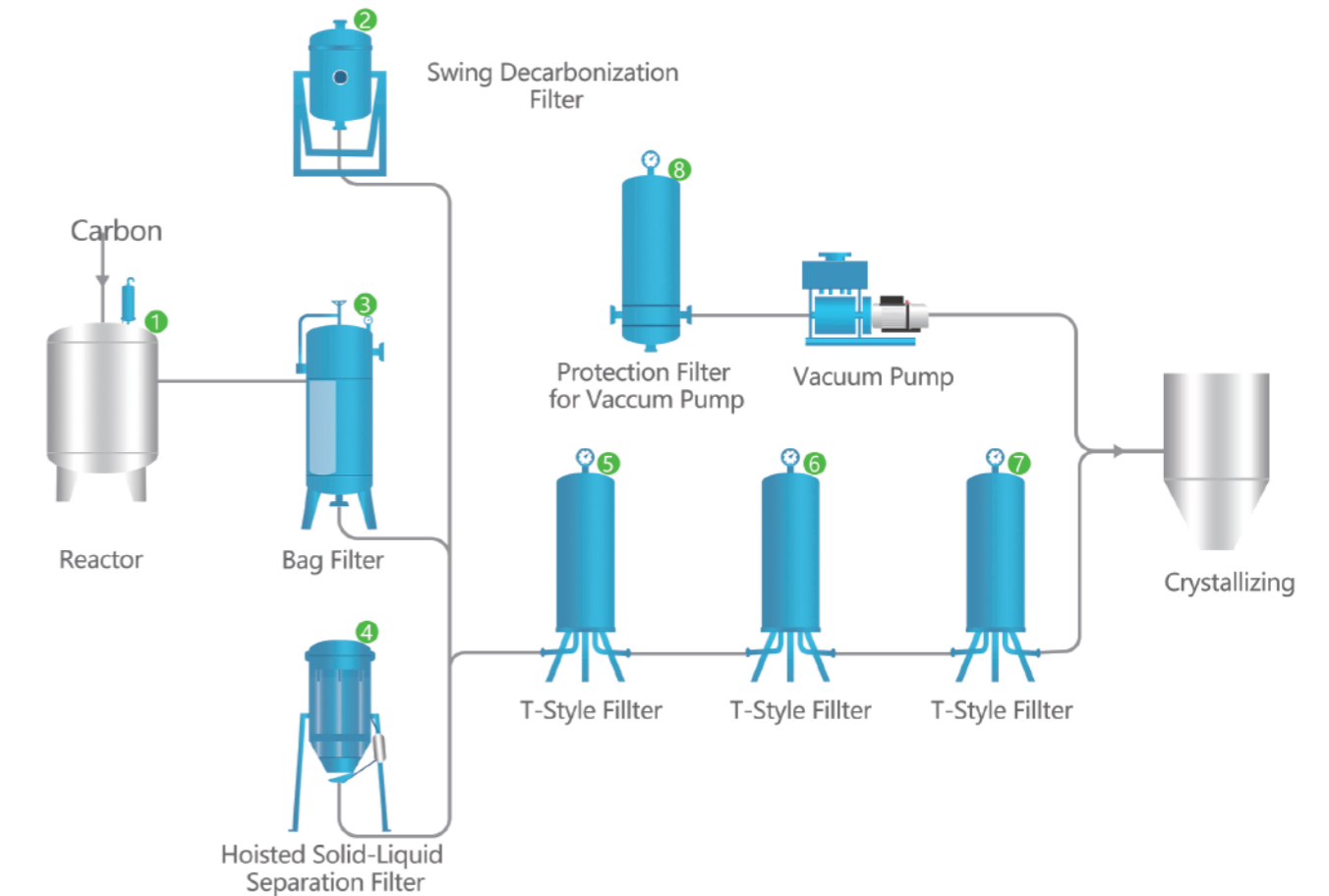
WORKS Filtration Solutions of Sterile APIs



Recommended Product

No.	Filter Housings	Filter Media & Filter Cartridges
1	Plate-and-Frame Filter	PP Filtration Media, Filter Cloth
2	Stainless Steel Liquid Filter	PRP-PP Filter Cartridges
3	Swing Decarbonization Filter	Titanium Rod /PA/PE/PTFE Sintered /Stainless Steel Filter
4	Sanitary T-style Filter Housings	HPP -PP Filter Cartridges
5	Sanitary T-style Filter Housings	HEPS-PES,LHF-PTFE,LPN -Nylon Membrane Filter Cartridges
6	Sanitary T-style Filter Housings	HPPS-PES,LHF-PTFE,LPN-Nylon Membrane Filter Cartridges
7	Sanitary Heatable Vent Filter	KLPF-PTFE /LPFA-PTFE Filter Cartridges

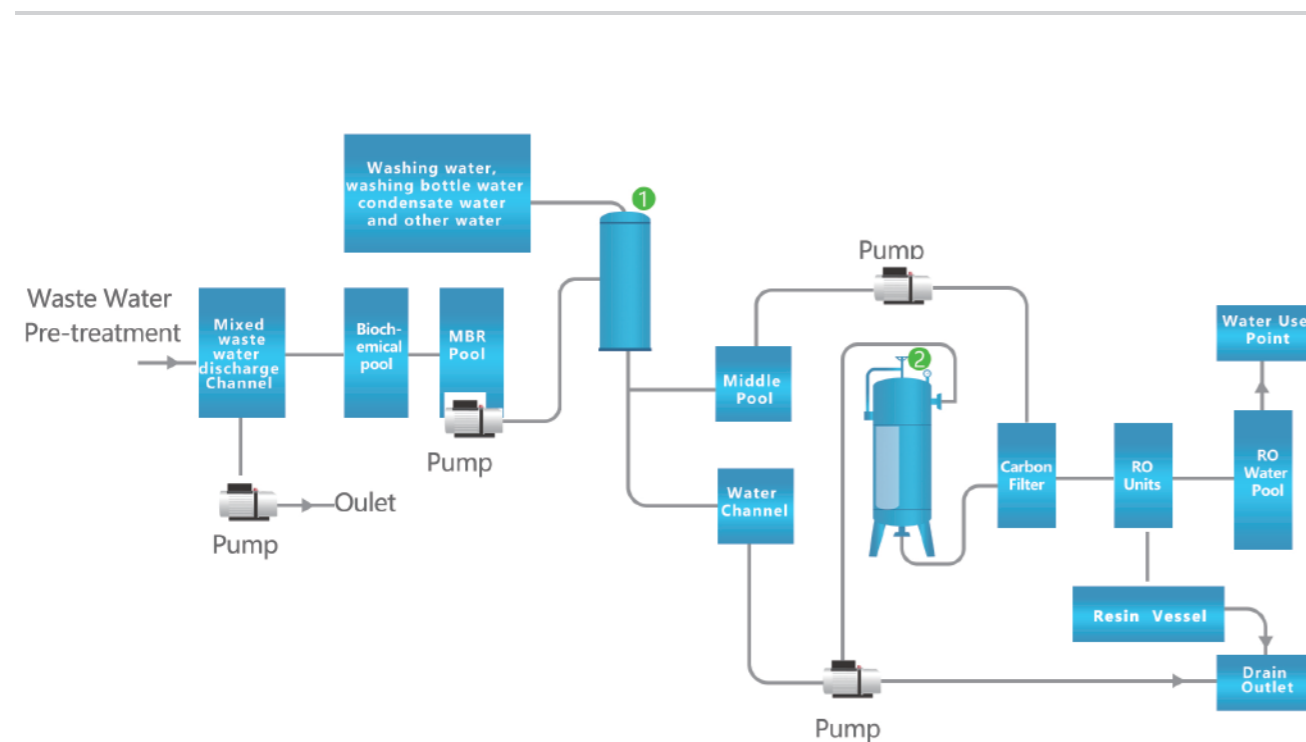
WORKS Filtration Solution of Decarbonizing in APIs



Recommended Product

No.	Filter Housings	Filter Cartridges
1	Sanitary Heatable Vent Filter	KLPF -PTFE /LPFA -PTFE Membrane Filter Cartridges
2	Swing Decarbonization Filter	Titanium Rod /PA/PE Sintered /Stainless Steel Filter
3	Bag Filter	PP/PTFE Filter Bag
4	SS Liquid Filter Housings	Titanium Rod /PA/PE/ Sintered /Stainless Steel Filter
5	T-style Filter Housings	HPP-PP Filter Cartridges
6	T-style Filter Housings	HEPS- PES, LHF-PTFE ,LPN-Nylon Membrane Filter Cartridges
7	T-style Filter Housings	HPPS-PES, LHF-PTFE,LPN-Nylon Membrane Filter Cartridges
8	Vacuum Pump Protection Filter	High Flow Dust /High Flow Sintered Filter Cartridges

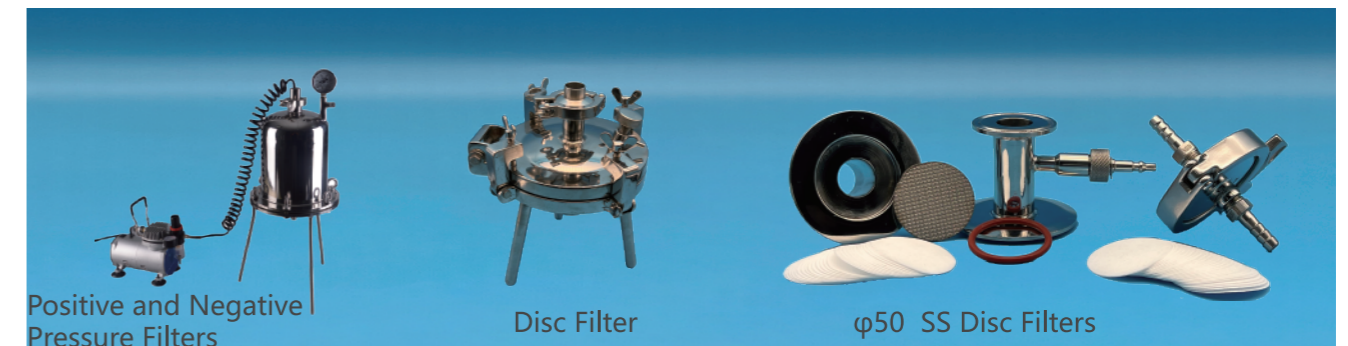
WORKS Filtration solutions of Production Wastewater Reuse



Recommended Product

No.	Filter Housings	Filter Cartridges
1	High Flow Filter Housings High	High Flow Filter Cartridges
2	High Flow Filter Housings High	High Flow Filter Cartridges

WORKS Medium and Small Scale Filter Solutions

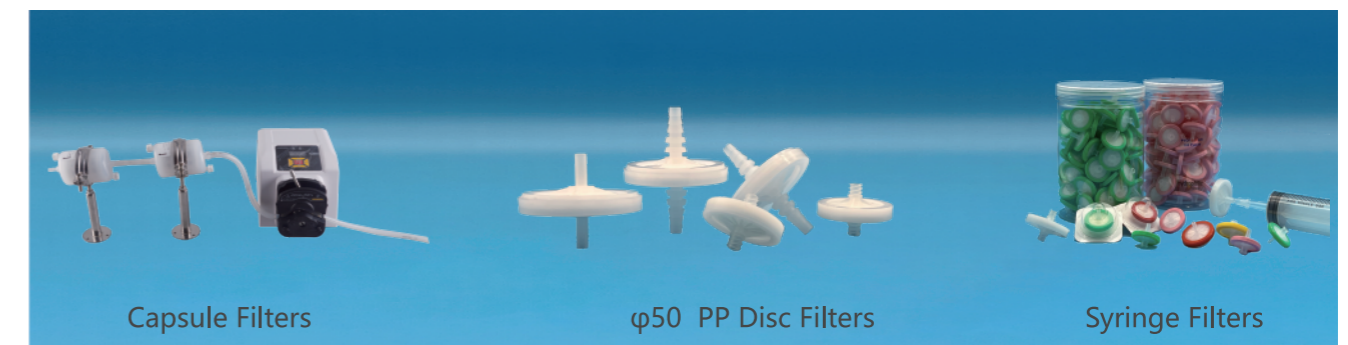


Positive and Negative pressure Disc Filter

Application 500ml-50L Liquid Filtration

Disc Filter Housings

Diameter (mm): φ50, φ100, φ150, φ200, φ250, φ300, φ400



Capsule Filters

Diameter (mm) 20, 27, 34, 35, 46, 60, 72, 74, 85, 87 etc.

Height 1", 2", 2.5", 5", 7.5", 10", 20", 30", 40" etc.

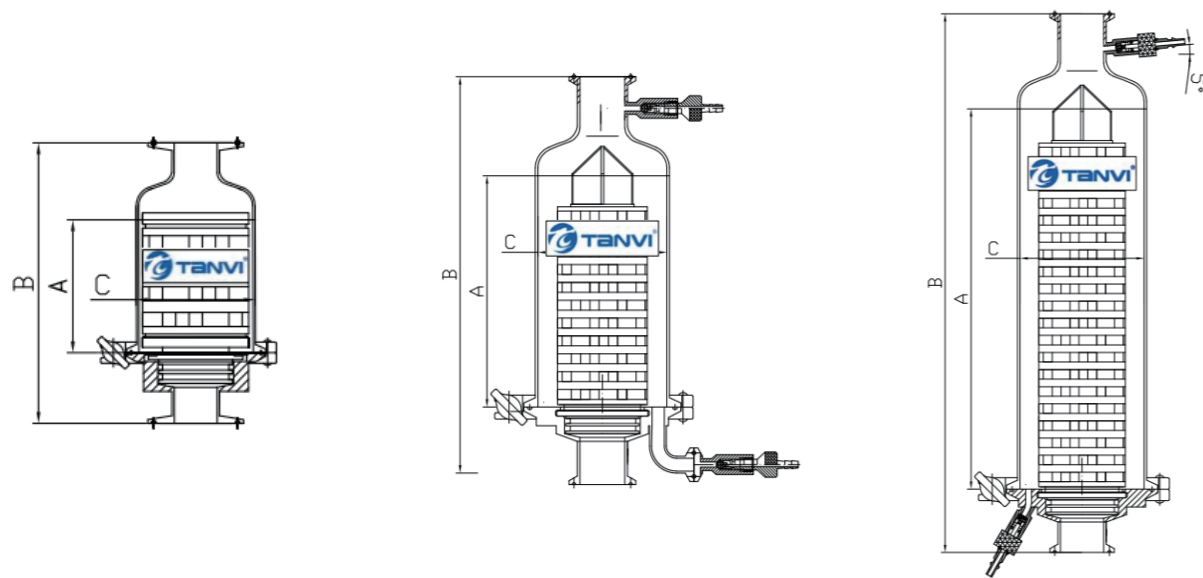
Single-round In-line Filter Housings

In-line filter Housings adopts the form of top inlet and bottom outlet, they have simple and compact structure, suitable for direct connection with pipelines or tanks to form a filter unit, and is widely used in vent filters, compressed air terminal sterilization, etc.

Specification

Internal Surface	Mirror Polishing
Outside Surface	Mirror Polishing,Matte
Material of Seals	Silicone, EPDM,Viton,PTFE
Inlet and Outlet	Clamp, Flange
Design Pressure	0.6~1.0MPa
Design Temp.	20°C~140°C
Connection	304 or 316L

Drawings



Technical Data:

Code	Thick-ess	Cartridges		Inlet& Outlet (mm)	Dimensions (mm)				
		QTY	L		Connection	Ferrule (mm)	A	B	C
TSGD0105	2mm	1	5"	Φ25/Φ38	Clamp	Φ50.5	180	325	102
TSGD0110			10"				300	445	102
TSGD0120			20"				550	695	102
TSGD0130			30"				800	945	102

The regular diameter is 102mm, other dimensions, please contact Tanvi technical department

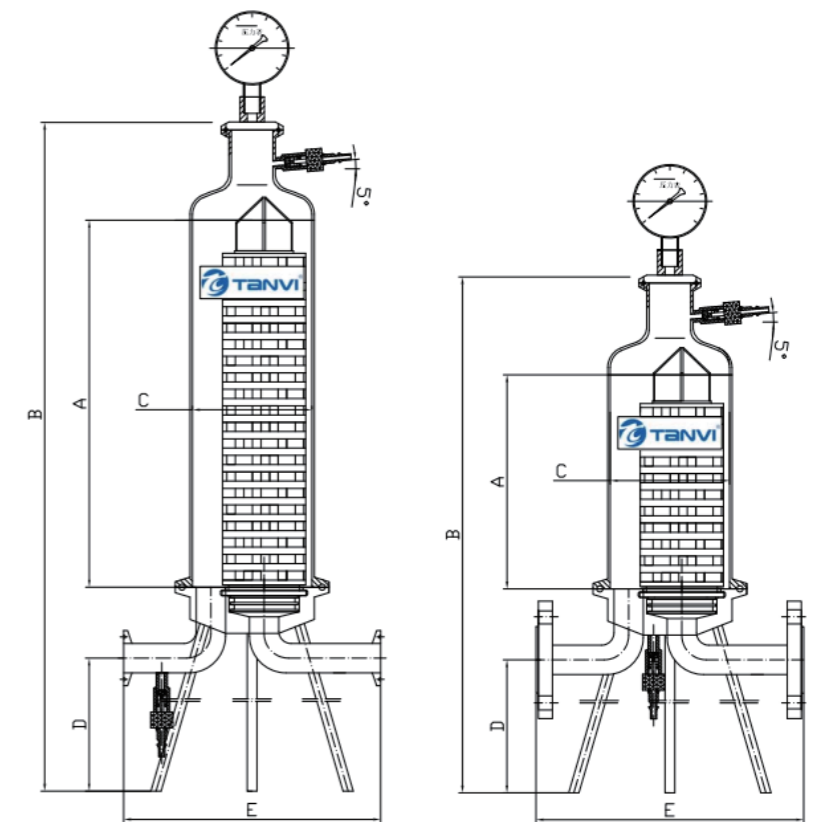
Sanitary Grade Single-round T-style Filter Housings

The T-style filter Housings is made of high-quality 304 or 316L stainless steel. The streamlined structure reduces the hygienic dead space inside the filter and prevents bacterial contamination. The filter can be completely removed and washed, easy to be installed and operated.

Specification

Internal Surface	Mirror Polishing	Design Pressure	0.6~1.0MPa
Outside Surface	Mirror Polishing,Matte	Design Temp.	20°C~140°C
Material of Seals	Silicone,EPDM,Viton,PTFE	Seal type	Gasket, O-rings
Connection	Clamp	Inlet and Outlet	Clamp,Flange, Thread
		Filter Connector	226、222、220、215、116
		Material	SUS304 or SUS316L

Drawings



Technical Data:

Flow Rate (T/H)	Cartridges		Inlet&Outlet			Dimensions (mm)				
	QTY	L	Φ18	Clamp	Φ50.5	A	B	C	D	E
0.3	1	5"	Φ25	Clamp	Φ50.5	180	485	102	150	215
0.5	1	10"	Φ25	Clamp	Φ50.5	300	605	102	150	215
1	1	20"	Φ25	Clamp	Φ50.5	550	855	102	150	215
1.5	1	30"	Φ25	Clamp	Φ50.5	800	1105	102	150	215

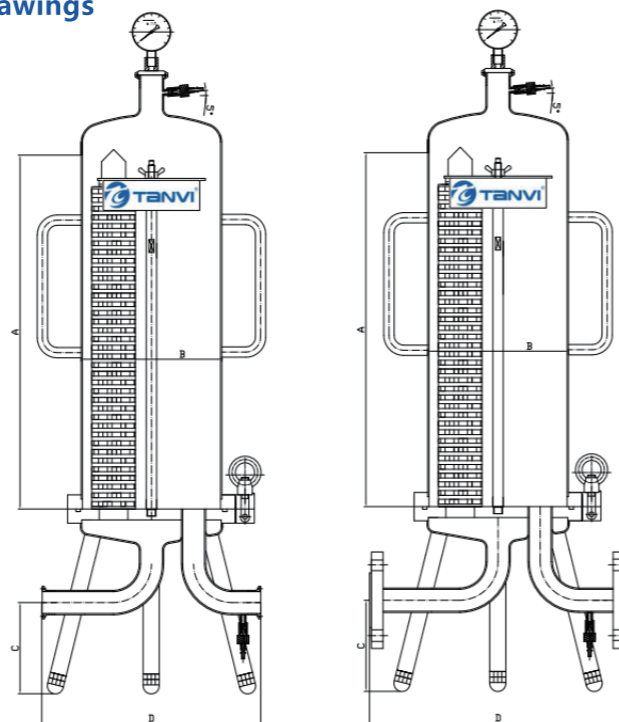
Sanitary Grade Multi-round T-style Filter Housings

The multi-round T-style filter Housings is made of high-quality 304 or 316L stainless steel. The streamlined structure reduces the hygienic dead space inside the filter and prevents bacterial contamination. The cylinder of the filter is connected by flange, which has good pressure resistance and is easy to be disassembled. Multiple cores can be installed, suitable for large flow filtration.

Specification

Internal Surface	Mirror Polishing	Design Temp.	20°C~140°C
Outside Surface	Mirror Polishing,Matte	Seal Type	Gasket, O-rings
Material of Seals	Silicone, EPDM,Viton,PTFE	Inlet and Outlet	Clamp,Flange, Thread
Connection	Clamp, Flange	Filter Connector	226, 222, 220 (Customized)
Design Pressure	0.6-1.0Mpa	Material	SUS304 or SUS316L

Drawings



Technical Data

Flow Rate (T/H)	Cartridges		Inlet and Outlet			Dimensions (mm)				
	QTY	L	Size	Type	Ferrule (mm)	A	B	C	D	E
3	3	20"	1.5	Clamp	Φ50.5	550	219	200	360	1080
5	5	20"	1.5	Clamp	Φ50.5	550	250	200	400	1110
7	7	20"	2	Flange	Φ60 DN50	550	273	200	420	1150
9	9	20"	2	Flange	Φ60 DN50	550	325	200	480	1220

Note: The above parameters are for reference only, the actual size is subject to Tanvi's drawings, due to space limitations, 15-160 round filter data please contact us.

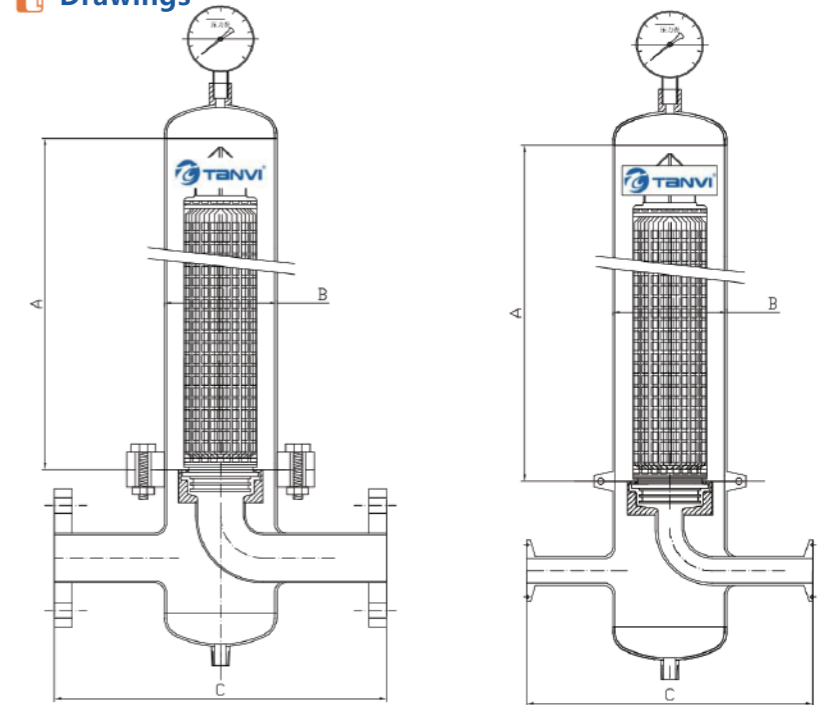
Stainless Steel Sanitary Grade Cross-style Filter Housings

Cross-style Filter Housings can be widely used in food, biochemical, beverage, beer, medicine, electronics and other industries, and can also be used for sterilizing air and various liquids.

Specification

Design Pressure	0.6~1.0MPa	Filter Connector	226, 222, 220 (Customized)
Design Temp.	20°C~140°C	Connection	Clamp,Flange, Thread
Seal Type	Gasket, O-rings	Application	Air, nitrogen, oxygen, and other gases
Inlet and Outlet	Clamp,Flange		
Surface Finish	Mirror Polishing,Matte		
Material	SUS304 SUS316L		

Drawings



Technical Data

Code	Thick-ness	Cartridges		Flow Rate (m³/min)	Connection		Dimensions (mm)		
		QTY	L		Type	Size (mm)	A	B	C
TSKJ0105	2mm	1	5"	0.5	Clamp or Flange	φ50.5 DN25	180	102	260
TSKJ0110			10"	2			300	102	260
TSKJ0120			20"	4			550	102	260
TSKJ0310	3mm	3	10"	5	Flange	DN65	180	219	380
TSKJ0320			20"	10			300	219	380
TSKJ0520			5	20"			20	300	250

Note: The above parameters are for reference only, the actual size is subject to Tanvi's drawings, due to space limitations, 7-round filter data please contact us.

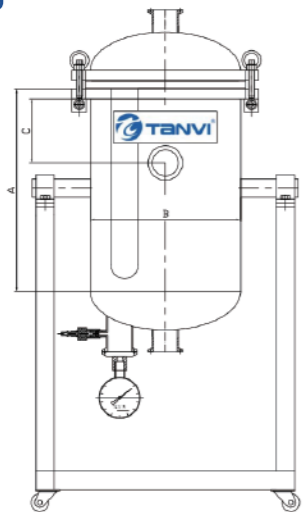
Swing Decarbonization Filters

Swing Decarbonization Filter is a closed precision filter device that composed of sintered filter Cartridges and stainless steel shell .With Titanium powder sintered filter Cartridges , stainless steel powder sintered filter Cartridges, PA/PE sintered filter Cartridges, etc.,it can be widely used in solid-liquid and solid-gas separation in pharmaceutical, chemical, food, metallurgy, electronics, water treatment and other fields.

Features and Benefits

- High Ratings (0.22-100 microns)
- Low differential pressure, high flow
- Mechanically good
- Renewable, easy to clean, long life
- Body material: 304, 316L, sprayed with PTFE, etc.

Drawing



Technical Data:

Code	Filter Cartridges		Dimensions		C
	Quantity	Length	A	B	
TSTFE0310	3	10"	350	219	175
TSTFE0510	5	10"	350	250	175
TSTFE0710	7	10"	350	273	175
TSTFE0910	9	10"	350	300	275
TSTFE0920	9	20"	550	300	175
TSTFE1310	13	10"	350	350	275
TSTFE1320	13	20"	550	350	

Heatable Vent Filters

Heatable Vent Filters are designed in accordance with GMP requirements, the product consists of a stainless filter, thermal insulation heating jacket, stainless steel outer cover, and temperature control box. Mainly used in vent filters that require a dry environment to prevent the accumulation of condensed water and the growth of microorganisms. It is widely used in the transformation of storage tanks, gas exchange systems and old-fashioned tank vent filters in biological products, pharmaceuticals, fermentation and other industries.

Specification

Nominal Voltage	220V
Withstand voltage	1.5kv
Insulation resistance	> 5MΩ
Insulating material	Silicone
Working Temp.	-60°C—+250°C
Heating Temp.	0-120°C,0-140°C (Customized)
Temp.Indication	Heating—red , Setting—green
Temp. Sensor	K-type thermocouple or PT100

Technical Data

Model Name	Cartridges	Inlet&Outlet	Diameter	Length	Heating Temp.
Complex PTFE-layer Heating Jacket	1	Φ25	Φ102	5"	0~120°C
Complete Silicone Heating Jacket	3	Φ38	Φ219	10"	0~140°C
SS Shell Heatable Vent Filter	5	\	Φ255	20"	0~150°C
Sanitary Heatable Vent Filter	\	\	\	\	
Explosion-proof Controller Heatable Vent Filter	\	\	\	\	



Stainless Steel Bag Filters

The filter bags are supported by a metal mesh basket Inside the bag filter. The liquid passes through the filter bag, and the impurities are intercepted in the filter bag to achieve the effect of solid-liquid separation. It has the advantages of fast filtration speed, no medium shedding, acid and alkali corrosion resistance, high temperature resistance, and convenient operation. it is widely used in medicine, chemical industry, electronics, beverage, fruit wine, biochemical water treatment, environmental protection, etc.

Specification

Material	304、316L
Rating	0.5-100μm
Dimensions	1#, 2#, 3#, 4#, 5# Standard Bags (Customized)
Working Presssure	0.1-1.0
Working Temp.	1-140



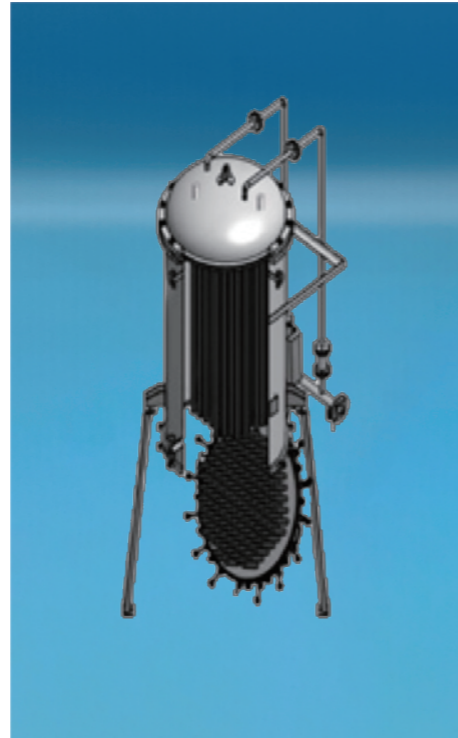
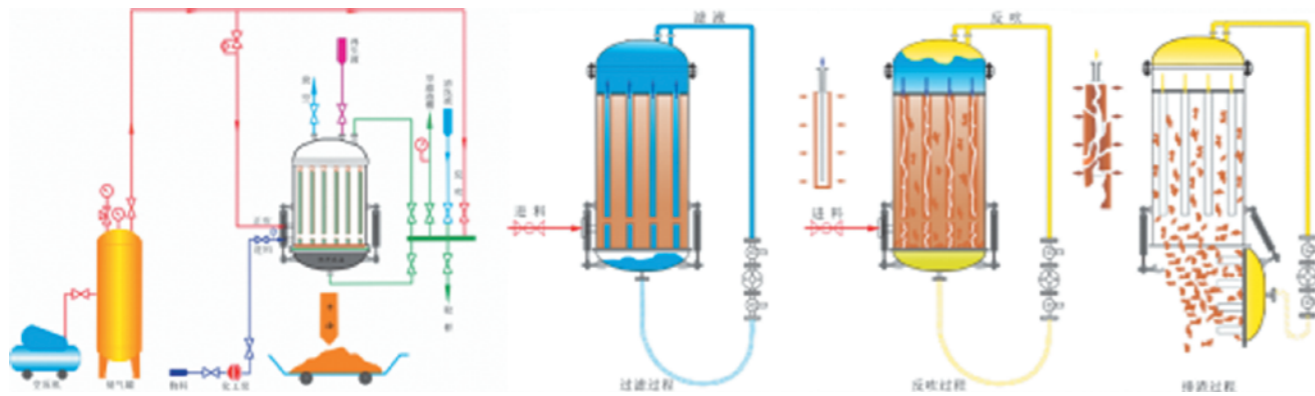
Hoisted Solid-Liquid Separation Filter

The filter has two filter areas, the upper part is the main filter area, and the bottom is the auxiliary filter area. The main filter area plays the main role of solid-liquid separation, and the bottom filter area handles the filtration of residual liquid. It is used for filtration that requires dryness of the filter residue and no leftover material. Completely enclosed filtration, clean production, the entire filtration process can be fully automated, odorless, and without any environmental pollution.

Specification

Ratings	0.22μm-200μm
Working Temp.	PE Cartridges≤90°C,PA Cartridges≤110°C
Filter Cartridges	Sintered tube with ultra-high molecular weight PE powder
Design Pressure	0.6MPa
Flow Rate	Depends on the actual working conditions

Schematic Diagram of Working Principle



Corrosion Resistant Stainless Steel Filter (F30/F40/PFA)



The inner surface of the stainless steel filter is sprayed with PTFE or lined with PTFE to enhance the anti-corrosion performance, There are various forms of filters, mainly used to filter corrosive liquids.

Rating:	0.1、0.22、0.45、1μm
Material	304、316L

Stainless Steel Y-style Filters



It is a coarse filter for pipelines, which can be used to filter large particles in gas or liquid. It can protect machinery and equipment (including compressors, pumps, etc.) process to ensure safe production.

Rating	10-500 Mesh
Material	304、316L

Corrosion Resistant Polymer Filter (PP/PVDF/PFA)



This filter is made of PP/PVDF/PFA material. According to the nature of the chemical solution, select the appropriate filter material to meet the specific filtration requirements of corrosive solvents.

Rating	1-600μm
Max. Working Temp.	90°C

Stainless Steel Basket Filters



It is composed of connecting pipe, cylinder, basket, flange, flange cover and fasteners. Installed on the pipeline to remove large solid impurities in the fluid, so that the equipment can work normally, reduce failures, achieve stable production.

Rating	10-300Mesh
Material	304,316L with PTFE Coating

Pleated PP Filter Cartridges

Pleated PP filter Cartridges, the filter medium is made of ultra-fine Polypropylene fibers, the support layers and the cage and core are made of Polypropylene material, which is made by hot-melt welding, without any adhesive, and without fibers release. Widely used in the pre-filtration and final filtration of various liquids and gases in the pharmaceutical industry.

Specification

Filter Medium	Polypropylene
Support Layers	Polypropylene
Cage	Polypropylene
Core	Polypropylene
Max. Working Temp.	60°C ($\Delta P \leq 0.10\text{Mpa}$)
Max. Working Pressure	Forward 4.2bar; Reverse 1.5bar (25°C)
Working PH Range	1-14
Differential Pressure of Change	$\geq 1.5\text{bar}$ (25°C)
Bio-safety	All components meet the specifications for biological safety of USP Class VI
Cleaness	No fibers and particle release

Applications

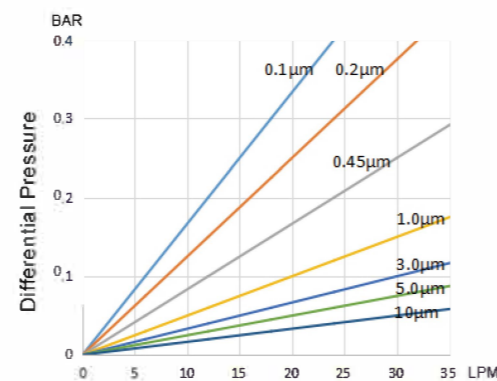
1. Clarification and filtration of oral liquids, pre-filtration of sterilizing preparations
2. Pre-filtration of biological products and pharmaceutical solvents
3. Pre-filtration of compressed air and process gas
4. Security filtration after decarburization and filtration of raw materials

Ordering Information

TANVI®	Ratings	Length	End Caps	O-rings
ORP Series	0100=0.1µm 010X=10µm	05=5"	CN=226 Fin	D= Buna-N
PRP Series	0220=0.22µm 020X=20µm	10=10"	CF=226 Flat	S= Silicone
HPP Series	0450=0.45µm 030X=30µm	20=20"	BF=222 Flat	V= Viton
APP Series	1000=1.0µm 050X=50µm	30=30"	BN=222 Fin	F= PTFE
	3000=3.0µm 075X=75µm	40=40"	A0=220 DOE	B= PTFE Coating
	5000=5.0µm			



Flow Rate



Flow rate-ΔP (Water L/min.10 ")

PES Membrane Filter Cartridges

PES membrane filter cartridges, the membrane adopts iasymmetric polyethersulfone membrane, it has uniform pores and high porosity, and the supporting layers are made of polypropylene. The filter cartridge is made by hot-melt welding without any adhesive and no medium falling off. The special structural design makes it have the characteristics of large flux and long service life, and is widely used in sterilization and filtration of aqueous solutions.

Specification

Filter Medium	Asymmetric PES Membrane
Support Layers	Polypropylene
Cage/Core	Polypropylene
Max. Working Temp.	60°C ($\Delta P \leq 0.10\text{Mpa}$)
Max. Working Pressure	Forward 4.2bar; Reverse 1.5bar (25°C)
Working PH Range	1-14
Sterilization Cycles	121°C 30min ≥ 15 cycles
ΔP of Change	$\geq 1.5\text{bar}$ (25°C)
Bio-safety	All components meet the specifications for biological safety of USP Class VI
Endotoxin	≤ 0.25 EU/ml
Cleaness	No fibers and particle release

Applications

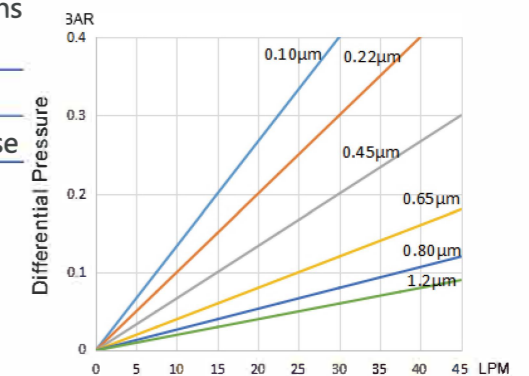
1. In the biopharmaceutical industry, removal of particles, sterilization and filtration of process water
2. Sterilization and filtration of food additives

Ordering Information

TANVI®	Ratings	Length	End Caps	O-rings
FAPS Series	0040=0.04µm	05=5"	CN=226 Fin	D= Buna-N
CAPS Series	0100=0.1µm	10=10"	CF=226 Flat	S= Silicone
HPPS Series	0220=0.22µm	20=20"	BF=222 Flat	V= Viton
HEPS Series	0450=0.45µm	30=30"	BN=222 Fin	F= PTFE
	1000=1.0µm	40=40"	A0=220 DOE	B= PTFE Coating
	3000=3.0µm			
	5000=5.0µm			



Flow Rate



Flow rate-ΔP (Water L/min.10 ")

PTFE Membrane Filter Cartridges

The filter membrane is made of PTFE, which has strong corrosion resistance and oxidation resistance; the supporting diversion layers are made of imported Polypropylene, and the filter cartridge is made by hot-melt welding without any adhesive and no medium shedding. Widely used in strong corrosive, strong oxidizing and other liquid sterilization filtration, as well as air sterilization filtration.

Specification

Filter Medium	Hydrophobic/ Hydrophilic PTFE Membrane
Support Layers	Polypropylene
Cage /Core	Polypropylene
Max. Working Temp.	60°C ($\Delta P \leq 0.10\text{Mpa}$)
Max. Working Pressure	Forward 4.2bar; Reverse 1.5bar (25°C)
Working PH Range	1-14
Sterilization Cycles	121°C 30min ≥ 15 cycles
ΔP of Change	$\geq 1.5\text{bar}$ (25°C)
Bio-safety	All components meet the specifications for biological safety of USP Class VI
Endotoxin	≤ 0.25 EU/ml
Cleaness	No fibers and particle release



Full-PFA Membrane Filter Cartridges

The filter cartridges are made of PTFE membrane and PFA cage and core. Based on complete fluoropolymer material, the filter cartridge has excellent corrosion resistance and can meet the filtration needs of various products such as strong corrosive organic solvents, strong acids, and strong alkalis.

Rating (μm)	0.1、 0.22、 0.45、 0.65、 0.8、 1.0、 3.0、 5.0、 10
Length	5"、 10"、 20"、 30"、 40"

Full-PVDF Membrane Filter Cartridges

The filter Cartridges is made of PVDF membrane and PVDF cage and core, which has excellent chemical compatibility, excellent temperature and pressure resistance, and is suitable for filtration of different acids, alkalis and organic solvents.

Rating (μm)	0.1、 0.22、 0.45、 0.65、 0.8、 1.0
Length	5"、 10"、 20"、 30"、 40"



PVDF Membrane Filter Cartridges

The material of membrane is PVDF. The filter Cartridges has extremely strong corrosion resistance and oxidation resistance, and can be used for sterile filtration of compressed air, vent filters and other gases, as well as liquid sterilization and filtration of highly corrosive and oxidative liquids. Low protein adsorption makes it ideal for filtering protein solutions

Specification

Filter Medium	Hydrophobic/ Hydrophilic PVDF Membrane
Support Layers	Polypropylene
Cage/Core	Polypropylene
Max. Working Temp.	60°C ($\Delta P \leq 0.10\text{Mpa}$)
Max. Working Pressure	Forward 4.2bar; Reverse 1.5bar (25°C)
Working PH Range	1-14
Sterilization Cycles	121°C 30min ≥ 15 cycles
ΔP of Change	$\geq 1.5\text{bar}$ (25°C)
Bio-safety	All components meet the specifications for biological safety of USP Class VI
Endotoxin	≤ 0.25 EU/ml
Cleaness	No fibers and particle release



Nylon Membrane Filter Cartridges

Nylon membrane filter Cartridges, the membrane material of filter cartridge is N6 or N66. The filter Cartridges has good mechanical properties, and the filter cartridge is suitable for alkaline solution filtration. Ideal for filtration of ultrapure water and high-purity chemical reagents.

Specification

Filter Medium	N6, N66 Membrane
Support Layers	Polypropylene
Cage/Core	Polypropylene
Max. Working Temp.	60°C ($\Delta P \leq 0.10\text{Mpa}$)
Max. Working Pressure	Forward 4.2bar; Reverse 1.5bar (25°C)
Working PH Range	6 ~ 13
Sterilization Cycles	121°C 30min ≥ 15 cycles
ΔP of Change	$\geq 1.5\text{bar}$ (25°C)
Bio-safety	All components meet the specifications for biological safety of USP Class VI
Endotoxin	≤ 0.25 EU/ml
Cleaness	No fibers and particle release



Pleated GF Filter Cartridges

The filter medium is made of ultra-fine glass fiber. The supporting layers and cage and core are made of Polypropylene. The filter Cartridges is made by hot-melt welding without any adhesive and without medium release. It can effectively remove particles in liquid or gases, especially for clarification and filtration of high-viscosity liquids. The filter Cartridges has high dirt holding capacity, high filtration ratings, high flow rate and long service life.

Specification

Filter Medium	Ultrafine borosilicate glass fiber
Support Layers	Polypropylene
Cage/Core	Polypropylene/glass-fiber
Max. Working Temp.	60°C ($\Delta P \leq 0.10\text{Mpa}$)
Max. Working Pressure	Forward 4.2bar; Reverse 1.5bar (25°C)
Working PH Range	1-14
ΔP of Change	$\geq 1.5\text{bar}$ (25°C)
Bio-safety	All components meet the specifications for biological safety of USP Class VI
Cleaness	No fibers and particle release



ACF Filter Cartridges

The ACF winding filter Cartridges is made of high-efficiency active carbon fibers, which has a good adsorption capacity for chlorine, heavy metals, odors, pigments, etc. The support layers and cage are made of Polypropylene, and the filter cartridge is made by hot-melt welding without any adhesive and no medium release. It can replace the decolorization function of powdered activated carbon in the production process.

Specification

Filter Medium	ACF Sheet
Support Layers	Polypropylene
Cage/Core	Polypropylene/Glass-fiber
Max. Working Temp.	60°C ($\Delta P \leq 0.10\text{Mpa}$)
Max. Working Pressure	Forward 4.2bar; Reverse 1.5bar (25°C)
Working PH Range	1-14
ΔP of Change	$\geq 1.5\text{bar}$ (25°C)
Bio-safety	All components meet the specifications for biological safety of USP Class VI



Capsule Filters ,Φ72mm, Tri-clamp

Capsule filter, is also called a disposable filter, is a small filter unit. Easy to use, the capsule filter is very suitable for small flow liquid and gas filtration due to its small size and small filtration area. Including precious medicines, filtration of special chemicals that cannot contact metals, and air sterilization filtration of small fermentation systems.

Specification

Diameter	Φ72.4mm
Length	2.5" 5" 7.5" 10"
Inlet & Outlet	1" Tri-clamp
Vent/Drain	1/8" Hose Barb
Filter Media	PES/PP/PTFE/PVDF etc.
Filter Housings	Polypropylene
Max Working Pressure	80PSI/5.5bar
Max Working Temp.	50°C/120°F



Capsule Filters ,Φ72mm, Hose Barb

Specification

Diameter	Φ72.4mm
Length	2.5" 5" 7.5" 10"
Inlet & Outlet	1/4", 3/8" , 1/2" Hose Barb
Vent/Drain	1/8" Luer Lock
Filter Media	PES/PP/PTFE/PVDF etc.
Filter Housings	Polypropylene
Max Working Pressure	80PSI/5.5bar
Max Working Temp.	50°C/120°F



Capsule Filters ,Φ89mm, Tri-clamp

TNQ Series capsule filter, the inlet and outlet are 1 inches, the diameter is 89mm, the filtration area is large, the flux is high, the operation is simple, and the replacement is convenient. The whole cylinder is made of PP material, which is resistant to acid and alkali, and is suitable for filtration applications in various occasions.

Specification

Filter Medium	PP, GF, PES, N6, N66, PTFE, PVDF, ACF
Ratings	0.04, 0.1, 0.22, 0.45, 1, 3, 5, 10µm
Length (Inches)	2.5, 4, 5, 7.5, 10, 20, 30, 40
Support Layers	Polypropylene
Cage/Core	Polypropylene
Max. Working Temp.	80°C (ΔP≤0.10Mpa)
ΔP of Pressure	25°C, Forward 4.2bar; Reverse 1.5bar (25°C)
Working PH Range	1-14
ΔP of Change	≥1.5bar (25°C)



Disc Filters

Disc filters are widely used in laboratories, experimental equipment, filtration devices, and gas pipeline dust removal, sterilization, small-scale fermentation process gas sterilization process, etc. It is suitable for fermenter or bioreactor aeration, gas purification, gas sterilization and online vacuum pump protection.

Specification

Max Working Temp.	40°C (104°F)
Max Working ΔP	4.1 bar (60 psi) @25°C
Max Working	2.1 bar (30 psi)
Diameter	44mm, 65mm
Inlet and Outlet	1/4" Tube, Hose Barb, Luer



Syringe Filters

Syringe filters are easy to use, eliminating complex and time-consuming preparations, and are widely used in laboratories. The products are mainly used in sample pre-clarification, particle removal, sterilization and filtration, etc. Among them, the needle filter is used in conjunction with the disposable syringe, which is a fast, convenient and reliable filter processing device for small-volume samples routinely used in the laboratory. Its diameter is 13mm, 25mm, 33mm, and the processing capacity is from 0.5ml to 200ml. It is used for sample filtration in liquid or gas phase analysis.



Specification

Item	Filter Media	Diameter (mm)	Rating (µm)
Nylon Membrane Syringe Filter	Nylon (N6)	13,25,33	0.22,0.45
MCE Membrane Syringe Filter	Mixed Cellulose Ester (MCE)	13,25,33	0.22,0.45
PTFE Membrane Syringe Filter	Polytetrafluoroethylene (PTFE)	13,25,33	0.22,0.45
PES Membrane Syringe Filter	Polyethersulfone (PES)	13,25,33	0.22,0.45
PVDF Membrane Syringe Filter	Polyvinylidene Fluoride(PVDF)	13,25,33	0.22,0.45
PP Syringe Filter	Polypropylene(PP)	13,25,33	0.22,0.45
Fiberglass Syringe Filter	Glassfiber (GF)	13,25,33	0.8,1.2
CA Membrane Syringe Filter	Cellulose Acetate (CA)	13,25,33	0.22,0.45

High Flow Filter Cartridges



The high-flow filter cartridge is made of high-performance ultra-fine fiber filter material. The liquid flow rate is high, and the filter Cartridges has high dirt holding capacity. Widely used in food, beverage, pharmaceutical, electronics, chemical, electric power and other industries. Our company can select and match filter materials according to customer requirements.

Specification

Filter Medium	Polypropylene Fibers
Support Layers	PP Mesh fabric + non-woven fabric
Cage	PP Net, PP
Core	ABS, PP
Max. Working Temp.	60°C (ΔP≤0.10Mpa)
Max Working Pressure	Forward 4.2bar; Reverse 1.5bar (25°C)
Working PH Range	1-14
ΔP of Change	≥1.5bar (25°C)
Cleaness	No fibers and particles release

High Flow Dust Removal Filters

The high flow dust filter has several advantages: high efficiency and energy saving, large folded filter area, high flux, and small pressure loss. Therefore, the equipment is small in size, small in floor space.

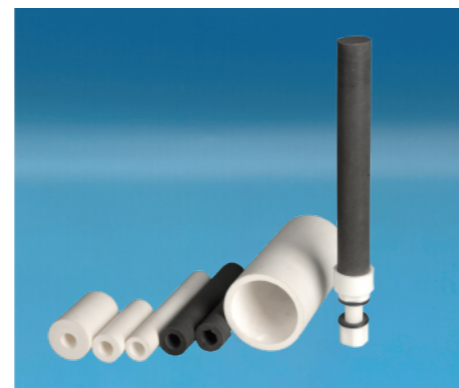
They are used as pre-filters to intercept a large amount of dust and particles, protect the downstream filter, prolong the service life of the precision filter, ensure the stability of the pressure at the rear end of the gas, good filtering effect, and convenient regeneration.

According to market conditions, Tanvi has launched several products such as wood pulp fiber dust filter, HV filter paper dust filter, ultra-fine glass fiber dust filter, polyester dust filter, etc., which are widely used in fermentation, tobacco, textile and other industries.



Sintered PA/PE Filter Cartridges

PE filter Cartridges is made of high-purity polyethylene. The micro pores are evenly distributed. It has strong tensile pressure at 80°C, not easy to deform, impact resistance, strong acid resistance and strong alkali resistance. The PA filter Cartridges is made by adding activated carbon powder to the polyethylene matrix during processing. It can more effectively increase the temperature resistance of the product, and has the functions of activated carbon adsorption and decolorization.

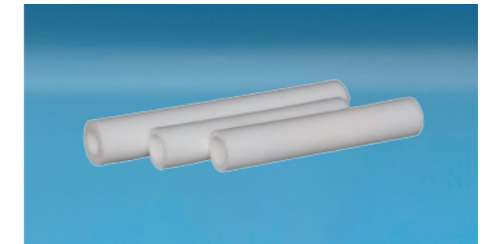


PA/PE Specification (Customized)

Outer Diameter (mm)	Length (mm)	Ratings	End Caps
Φ31、Φ38	200、300、500、1000、2000	0.22、0.5、1、3、5、10、20、50、100	M20, M22, M25 SOE
Φ50、Φ62	200、300、500、1000	0.22、0.5、1、3、5、10、20、50、100	M30, M36, 222, 226 SOE
Φ68	200、500、1000	0.22、0.5、1、3、5、10、20、50、100	M30, M36, 222, 226 SOE
Φ100、Φ150	500、1000	0.22、0.5、1、3、5、10、20、50、100	DOE

Sintered PTFE Filter Cartridges

Tanvi Sintered PTFE filter uses imported PTFE as the filter medium and adopts advanced vacuum sintering process. The outside surface is as smooth as wax, so impurities are not easy to stick to the surface of the filter. At the same time, the outside surface has high filtration ratings and the inner layer has lower filtration ratings. Impurities are not easy to embed in the filter body, the filter is easy and thorough to clean, the cleaning effect is excellent, and the service life is long.



Specification

Length	5 " 10 " 20 " 30 " 40 " 50 " 60 " 70 " 80 "
Ratings	0.3μm 0.45μm 1μm 5μm 10μm
Connector	M20 215 220 222 226 DOE
Seals	Viton Silicone PTFE
Sterilization	121°C for 30minutes; 85°C water

String Wound Filter Cartridges

String wound filter is made of textile fiber thread, which is precisely wound on the porous cage and core according to a specific process to form a honeycomb structure with sparse outer and dense inner. When winding, the winding density and shape are controlled to make filter cartridges with different filtration ratings. Tanvi adopts advanced winding technology to prolong the service life, increase the dirt holding capacity, reduce the frequency of replacement, and reduce the production cost.



Specification

Ratings	1μm, 3μm, 5μm, 10μm, 20μm, 30μm, 50μm, 75μm, 100μm;
OD	φ60mm, φ65mm; (Customized)
ID	φ28mm, φ30mm; (Thread, DOE)
Length	10", 20", 30", 40"; (Customized)
Max Working Temperature	≤0.4MPa; ΔP: 0.2MPa;
Material	Polypropylene, Cotton, Fiberglass
Core	PP, Stainless Steel

Melt-blown Filter Cartridges

The melt-blown filter is tubular filter cartridges that is made of high-purity Polypropylene particles, The production process includes heated and melted, sprayed, drawn, and formed. Meltblown filter cartridges are used in large quantities in water purification. With outstanding chemical compatibility, it is suitable for filtration of strong acids, strong alkalis and organic solvents. Strong dirt holding capacity, long service life and low cost

Specification

Ratings	1µm, 3µm, 5µm, 10µm, 20µm, 30µm, 50µm, 75µm, 100µm
OD	φ60mm, φ63mm, φ65mm; (Customized)
ID	φ28mm, φ30mm;
Length	10", 20", 30", 40"; (Customized)



Sintered SS Mesh Filter Cartridges

Tanvi stainless steel five-layer sintered mesh filter is sintered by stainless steel sintered mesh, stainless steel woven mesh and stainless steel fiber sintered felt. Ratings are 1-200µm. It has the characteristics of good permeability, high strength, strong corrosion resistance, easy to clean and backwash, not easy to be damaged, and no consumables to fall off. Filter are used for filtration of polyester, oil, pharmaceuticals, food and beverage, chemical products, and also for filtration of water and air. It has excellent temperature resistance, corrosion resistance and pressure resistance performance.

Specification

Working Temperature	-150≤N≤500°C
Ratings	1µm~200µm
Max Working Pressure	0.8MPa
Length	2-40" (Customized)
End Cap	222, 226, 215, Thread



Sintered SS Power Filter Cartridges

Tanvi stainless steel powder sintered filter cartridge is made of ultra-fine stainless steel powder sintered at high temperature. By selecting powder particle size and process parameters, the pore size and distribution can be adjusted, and it is widely used in pharmaceutical decarburization process and steam filtration

Specification

Ratings	0.45/1/3/5/10/20/30/50/80/100 (µm)
OD (mm)	20, 35, 50, 60, 65, 70, 80, 89, 160
Material	Stainless Steel Power
Working Temp.	0~450°C
End Cap	222, 226, 215, NPT



Pleated SS Wires Filter Cartridges

Tanvi stainless steel pleated mesh filter is made of stainless steel fiber sintered felt and stainless steel woven mesh after processing and folding. The main filter layer is stainless steel fiber sintered felt, which is a porous deep filter material made of stainless steel fiber sintered at high temperature. The stainless steel pleated filter cartridge made of it has the characteristics of high porosity, larger filtration area, strong dirt holding capacity, good strength, not easy to fall off, easy to clean, high temperature resistance, and economical to use.

Specification

Working Temperature	-150≤N≤500°C
Ratings	1µm~200µm
Max Working Pressure	0.8MPa
Length	2-40" (Customized)
End Cap	222, 226, 215, Thread

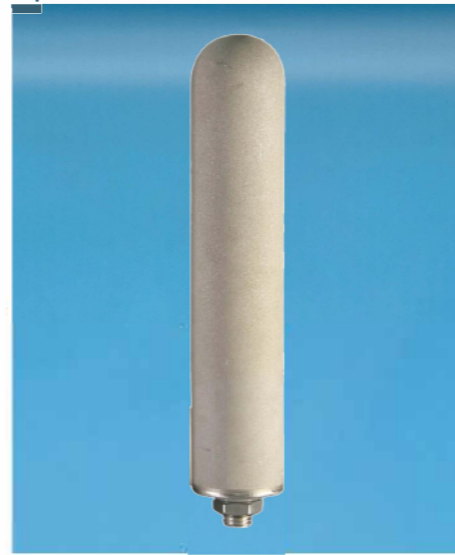


Titanium Rod Filter Cartridges

The titanium rod filter cartridges have wide chemical compatibility, can be used for most liquid filtration, and have good performance in dust filtration. Because of high porosity and good strength, it is especially excellent in filtration of rigid particles, so it is widely used in decarburization and filtration of liquids. At the same time, because of the chemical properties of titanium, it is used in filtration systems such as strong oxidizing liquids, various complex chemical liquids, and steam, which is ideal for selection.

Specification

Rating	0.45µm-100µm
Ratio of Pores	28-45%
OD (mm)	8、20、30、50、60、70、100、130etc.
Air Permeability	0.02-20L
Max Working Pressure	≤0.4MPa; ΔP: 0.2MPa;
End Cap	222, 226, 215, Thread



Liquid Filter Bags

The liquid filter bag is the core part of the bag-type precision filter. The filter bag filter Ratings1-1000µm, the material is nylon, Polypropylene, polyester, polyaramid, polytetrafluoroethylene, wool and so on. Divided into monofilament and multifilament filter bags, needle felt filter bags and melt-blown non-woven filter bags. Choose the required filter bag according to different media, chemical conditions and temperature during filtration.

Specification

Standard Code	Diameter of Ring	Length	Filtration Area	Flow Rate (Water)
1#	180mm 7"	430mm 17"	0.25m ²	20m ³ /h
2#	180mm 7"	810mm 32"	0.5m ²	40m ³ /h
3#	105mm 4"	230mm 9"	0.09m ²	6m ³ /h
4#	105mm 4"	380mm 15"	0.15m ²	12m ³ /h
5#	155mm 6"	560mm 22"	0.25m ²	18m ³ /h



Membrane Filters

Microporous membranes are white, flat, smooth, and has a uniform microporous structure. The porosity is 70~80%, and the pore size distribution ranges from 0.1~30µm. Thin material, high filtration ratings, fast filtration speed, etc. Usually used to filter out bacteria and particles, it is an ideal filter product for laboratories, environmental monitoring, and industrial production.



Specification

Size	Round: Φ50, 100, 200, 300 etc.; Square: 400*400 500*500 600*600; Roll: W280, W320 etc.
Material	PP、GF、PES、N6、N66、PTFE、PVDF、ACF
Ratings	0.04, 0.1, 0.22, 0.45, 1, 3, 5, 10µm etc.

Filters Integrity Testers

Tanvi Integrity Tester is used to detect filter material bubble point, pressure-holding method, diffusion flow, water Necessary test equipment for parameters such as intrusion. After years of testing applications, Tanvi complete The tester has the advantages of convenient detection and good reliability.



Specifications

Version No.	TV1.2	TV4.0	TV6.5	TV8.0
Bubble Point(mbar)	590-6900	500-6900	100-8000	100-10000
Manual test	—	—	Fast	Fast
Interface	RS232 Serial Interface	RS232 Serial Interface	RS232 Serial Interface USB	RS232,USB ,WiFi
Number of Records	20Sets	500~1000Set,Graph	15000Sets, Data Export	300,000Sets, Data Export
Integrity Test Functions	Basic Bubble Point Test Diffusion Flow Test (Semi-Automatic)	Basic Bubble Point Test Enhanced Bubble Point Test Diffusion Flow Test Water Immersion Test	Manual Bubble Point Test Basic Bubble Point Test Enhanced Bubble Point Test Pressure Holding Test Diffusion Flow Test Water Intrusion Test Ultrafiltration Membrane Cassette Test	Manual Bubble Point Test Basic Bubble Point Test Enhanced Bubble Point Test Pressure Holding Test Diffusion Flow Test Water Intrusion Test Ultrafiltration Membrane Cassette Test

Filters for Vacuum



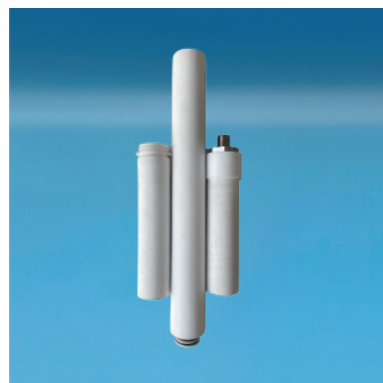
Vacuum Feeder — Polished SS Filters



Vacuum Feeder — Bag Filters



Vacuum



Vacuum Feeder — Sintered PE Filters



Vacuum Feeder — Polished Titanium Rod



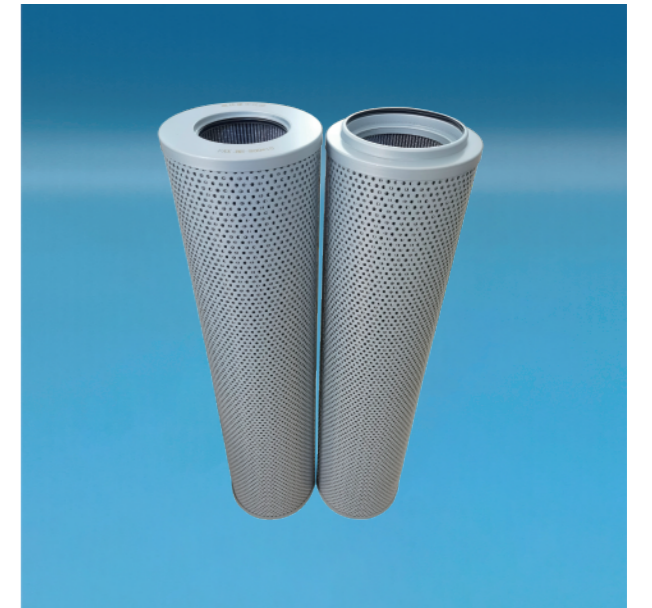
Compressed Air Filters, Filter Cartridges



Dust Removal Filters (1)



Dust Removal Filters (2)



Dust Removal Filters (3)